



UWL REPOSITORY

repository.uwl.ac.uk

Performance assessment of water reuse strategies using integrated framework of urban water metabolism and water-energy-pollution nexus

Landa-Cansigno, Oriana, Behzadian, Kourosh ORCID: <https://orcid.org/0000-0002-1459-8408>, Davila-Cano, Diego and Campos, Luiza (2019) Performance assessment of water reuse strategies using integrated framework of urban water metabolism and water-energy-pollution nexus. Environmental Science and Pollution Research, 27 (5). pp. 4582-4597. ISSN 0944-1344

<http://dx.doi.org/10.1007/s11356-019-05465-8>

This is the Accepted Version of the final output.

UWL repository link: <https://repository.uwl.ac.uk/id/eprint/6112/>

Alternative formats: If you require this document in an alternative format, please contact: open.research@uwl.ac.uk

Copyright: Creative Commons: Attribution 4.0

Copyright and moral rights for the publications made accessible in the public portal are retained by the authors and/or other copyright owners and it is a condition of accessing publications that users recognise and abide by the legal requirements associated with these rights.

Take down policy: If you believe that this document breaches copyright, please contact us at open.research@uwl.ac.uk providing details, and we will remove access to the work immediately and investigate your claim.



Performance assessment of water reuse strategies using integrated framework of urban water metabolism and water-energy-pollution nexus

Oriana Landa-Cansigno¹ · Kourosh Behzadian² · Diego I. Davila-Cano³ · Luiza C. Campos¹ 

Received: 7 February 2019 / Accepted: 14 May 2019

© The Author(s) 2019

Abstract

This paper evaluates the metabolism-based performance of a number of centralised and decentralised water reuse strategies and their impact on integrated urban water systems (UWS) based on the nexus of water-energy-pollution. The performance assessment is based on a comprehensive and quantitative framework of urban water metabolism developed for integrated UWS over a long-term planning horizon. UWS performance is quantified based on the tracking down of mass balance flows/fluxes of water, energy, materials, costs, pollutants, and other environmental impacts using the WaterMet² tool. The assessment framework is defined as a set of key performance indicators (KPIs) within the context of the water-energy-pollution nexus. The strategies comprise six decentralised water reuse configurations (greywater or domestic wastewater) and three centralised ones, all within three proportions of adoption by domestic users (i.e. 20, 50, and 100%). This methodology was demonstrated in the real-world case study of San Francisco del Rincon and Purisima del Rincon cities in Mexico. The results indicate that decentralised water reuse strategies using domestic wastewater can provide the best performance in the UWS with respect to water conservation, green house gas (GHG) emissions, and eutrophication indicators, while energy saving is almost negligible. On the other hand, centralised strategies can achieve the best performance for energy saving among the water reuse strategies. The results also show metabolism performance assessment in a complex system such as integrated UWS can reveal the magnitude of the interactions between the nexus elements (i.e. water, energy, and pollution). In addition, it can also reveal any unexpected influences of these elements that might exist between the UWS components and overall system.

Keywords Water-energy-pollution nexus · Urban water systems · Centralised and decentralised water reuse strategies · Urban water metabolism

Introduction

The integral management of urban water systems (UWS) is primarily recognised for addressing services to water supply, stormwater and wastewater collection, and treatment within

urban areas. The quality of the services provided in UWS can be evaluated by a number of performance criteria within the framework of sustainability (Behzadian and Kapelan 2015a). More specifically, UWS services should ideally act in such a way as to fulfil the technical, environmental, social, and economic requirements of sustainability aspects. For example, while it must provide the highest reliability to satisfy customers (i.e. social aspects), the adverse environmental impacts such as GHG emissions and pollutants discharge into receiving water bodies should be minimised. This performance is likely to be affected by some external scenarios such as urbanisation, population growth, and climate change. As a result, due to increasing water demands and more pressure on limited water resources, more attention must be paid to providing alternative water sources such as greywater or reclaimed water from water reuse options. In addition, water reclamation and reuse options are fundamental for city

Responsible editor: Philippe Garrigues

✉ Luiza C. Campos
l.campos@ucl.ac.uk

¹ Civil, Environmental and Geomatic Engineering, University College London, Gower St, London WC1E6BT, UK

² School of Engineering and Computing, University of West London, St. Mary's Rd, London W55RF, UK

³ Sistema Integrado de Tratamiento en los municipios de Rincón SITRATA, Camino a San Jerónimo s/n, col. San Jeronimo, 36407, Purisima, Guanajuato, Mexico

development and the reinforcement of circularity within the economy, which encompasses closing loops in material and energy flows, and minimising resource inputs and outputs for more efficient processes in cities (Geissdoerfer et al. 2017). Strategic implementation of water reuse is also important to fulfil political agendas towards sustainable development goals (WWAP 2017).

Among the water reuse options, it could be argued that centralised water reuse is more common in urban areas. Reclaimed water as a result of the treated effluent in centralised wastewater treatment works (WWTW) can be used for different demands including irrigation and toilet flushing in cities (Jiménez-Cisneros 2014). This approach benefits from the economy of scale although it is difficult to implement in rapidly urbanised cities due to space and resource constraints. On the other hand, decentralised water reuse is gaining more attention in cities for its modular design that is implementable near the source of generation such as households, high-rise buildings, or parts of a city in response to demand (Novotny 2013; Bieker et al. 2010). Wastewater in decentralised reuse strategies can generally be divided into greywater (effluent from the shower, washing machine, hand basin, dishwasher and kitchen) and black water (urine and faeces; Larse et al. 2016; Friedler et al. 2013; Domènech 2011). Existing reuse guidelines recommend effluent concentrations of biochemical oxygen demand (BOD) < 30 mg/L for use in urban irrigation or toilet flushing, which require treatments up to tertiary level (EPA 2012). Although wastewater treatment technologies seem to be highly efficient, they might also be energy intensive or produce more carbon emissions depending on the scale. Hence, the comparison of centralised vs decentralised water reuse is still an ongoing debate requiring further study (Chang et al. 2017; Valek et al. 2017; Matos et al. 2014; Mo et al. 2014; Opher and Friedler 2016; Singh et al. 2016).

Due to the widespread use of systemic assessment approaches for the analysis of water reuse alternatives, the comprehension of technical and environmental implications of UWS performance has increased significantly (Chen et al. 2012). The water-energy (WE) nexus assessment framework is a recently used type of systemic approach that highlights the linkages between water and energy and sometimes their connection with other sectors such as water-energy-food, water-energy-climate, or water-energy-pollution (WEP). Multiple frameworks and approaches to nexus assessment have been suggested by researchers in recent decades. Some studies focused on the nexus of energy and carbon footprints for comparative analysis among different wastewater treatment technologies (Singh and Kansal 2018; Gu et al. 2016; Singh et al. 2016) or various UWS at city scale (Valek et al. 2017). Other research works have used scenario analysis in the nexus framework to estimate the potential of water and energy savings in UWS when implementing greywater or rainwater

strategies. Such scenarios are mostly calculated through material flow analysis (MFA) or input and output (IO) methodologies (Silva-Vieira and Ghisi 2016; Duong et al. 2011). There has been consistent growth in extending the WE nexus to other areas, such as environmental assessments, with considerably greater focus on GHG emissions. Such frameworks included life cycle assessment (LCA) (Opher and Friedler 2016; Lane et al. 2015; Mo et al. 2014) or ecological network analysis (ENA) (Wang and Chen 2016). A few studies have demonstrated this nexus framework through system dynamics by using the casual relationship of the water sector to energy and costs from a residential end-use perspective (De Stercke et al. 2018) or from the food sector at national level (Sušnik 2018). Another nexus assessment approach was suggested through optimisation models to obtain trade-offs between nexus elements (Tsolas et al. 2018; Zhang and Vesselinov 2016). The WEP nexus in the UWS is defined here as the linkages between water, energy, and pollutant loads in the main components of the UWS during its operational phase (Kumar and Saroj 2014). The analysis of the WEP nexus in UWS can lead to reducing pollutants discharged into receiving water bodies while saving the energy used for removing pollutants in the treatment stage (Chang et al. 2017; Kumar and Saroj 2014). This can be carried out by some available tools that can concurrently model water flows and pollutant loads such as GloWPa and WorldQual at catchment scale (Kroeze et al. 2016), and UVQ (Urban Volume and Quality; Mitchell and Diaper 2005) and WaterMet² (Behzadian and Kapelan 2015a) at UWS level, to mention but a few. However, none of these models has extensively been used for comparing water reuse strategies within the assessment framework of the WEP nexus.

Another integrated analysis of the UWS is conducted through urban water metabolism derived from the urban metabolism approach proposed by Wolman (1965). This uses the analogy of city as living organism, in which both will demand input flows (such as energy and fuel), produce outputs (such as waste, emissions, and pollutants), and recycle waste for self-consumption. As water mass balance is dominated in cities (Wolman 1965), water metabolism research has been suggested as a priority for cities (Kenway 2013). Urban water metabolism specifically refers to the capacity and services in UWS, and their metabolic performance is analysed through various flows and fluxes of water, energy, materials, and other environmental impact categories within the system over a specific time period (Behzadian and Kapelan 2015a; Huang et al. 2013).

The theory and concept of urban water metabolism includes a wide range of performance implications, changing from resource efficiency and hydrological performance of different water servicing options in Australia (Farooqui et al. 2016), to ecological relationships among different UWS sectors and their wastewater discharges in China (Zheng et al.

2019). The integration of urban metabolism and the nexus approaches for performance assessment in real-world systems has not been employed substantially. More specifically, to the best of the authors' knowledge, there are limited applications of the urban metabolism concept to understand the linkages between water and energy in cities. For example, Kenway (2013) quantified the connection between water and energy flows through the urban metabolism approach of four Australian cities. However, the urban metabolism framework has not yet been used for assessment of the WEP nexus. This study aims to explore the impact assessment of centralised and decentralised water reuse strategies in integrated UWS using the integrated assessment framework of urban water metabolism and the WEP nexus. The general scheme of the integrated framework developed in this study comprises two main components: an integrated UWS modelling for the simulation of the sustainability performance of water reuse strategies, and a set of performance indicators for WEP nexus assessment. The next section describes the methodology used in this paper, followed by its demonstration in a real case study in Mexico. Then, results and discussion are presented, followed by conclusions and future recommendations.

Methodology

Assessment framework

The proposed framework comprises an urban water metabolism model (i.e. WaterMet²) coupled with a set of key performance indicators derived from the WEP nexus for a performance assessment of water reuse strategies in an integrated UWS. The WaterMet² model (Behzadian et al. 2014a) is customised here to analyse various centralised and decentralised water reuse strategies. The basic concepts and input data requirements in WaterMet² are briefly outlined below.

WaterMet² model

WaterMet² (WM2) is a conceptual mass balance-based model for the simulation of the metabolic performance of an integrated UWS. WM2 is a dynamic MFA (mass flow analysis) model with daily time step simulation combined with an environmental impact assessment for the long-term duration (e.g. 20–40 years). WM2 aims to evaluate the metabolic performance of UWS for business-as-usual (BAU) and any water management strategies.

The main UWS components in WM2 is included in four subsystems (Fig. 1): (a) *potable water supply* with components of water resources, water supply conduits, water treatment works (WTW), trunk mains, service reservoirs, and distribution mains; (b) *subcatchment* with components of local

areas in which water demand profiles and rainfall-runoff parameters are defined; (c) *sewerage* with components of stormwater and wastewater collection networks, wastewater treatment works (WWTW), and receiving water bodies; and (d) *water resource recovery* with two components of centralised and decentralised facilities in which rainwater, greywater, or wastewater is collected, treated, and transported/distributed to water demand points. WM2 is a distributed model which means any number of these components can be modelled in UWS. Water reuse in centralised water reuse is transported from WWTWs while decentralised water reuse takes domestic wastewater (i.e. a mix of greywater and black water) or greywater alone to be treated and collected within decentralised wastewater treatment systems (DEWATS) in local areas. The remaining wastewater not considered for reuse purposes is discharged into sewer networks and, eventually, receiving water bodies.

The model tracks down the main flows and fluxes of water, energy, materials, chemicals, pollutants, and other environmental impact categories through the main UWS components. More specifically, the model simulates daily time step of water flows in the UWS components in various forms, i.e. green water from rainwater and blue water from surface/ground water in the water supply subsystem; and greywater and black water from water consumption in the sewerage subsystem. The domestic sewage and stormwater collected in sewer networks are simulated on a daily basis and are transported to WWTWs where the influent is treated based on pollutant removals. The treated effluent is then either discharged into receiving water bodies or returned to water reuse applications. A simplified approach for water quantity modelling is adopted in WM2 by using a daily mass balance of the water flows without any travel time of water quality routing. Hence, sequential daily water quality modelling allows for the tracking of any contaminant loads. WM2 tracks down the daily pollution loads of any pollutant defined by the user based on the complete mixing assumptions at any UWS components (Mitchell and Diaper 2005). Such a simplification is inevitably considered for other similar conceptually based models, including the Urban Water Optioneering Tool (UWOT) developed by Makropoulos et al. (2008) and UVQ produced by Mitchell and Diaper (2005). The model requires daily water demand profiles and their temporal variations (daily/monthly/annually) over the planning horizon due to seasonal and annual fluctuations (Venkatesh et al. 2017). The daily and monthly variations can be adjusted by using historic data through the process of model calibration, while the yearly variations can be set based on the projections of population growth scenarios. The daily capacity of storage, transportation, and treatment is the input data for the simulation of water flow in the main UWS components through the balancing of stocks and flows (Behzadian et al. 2014a).

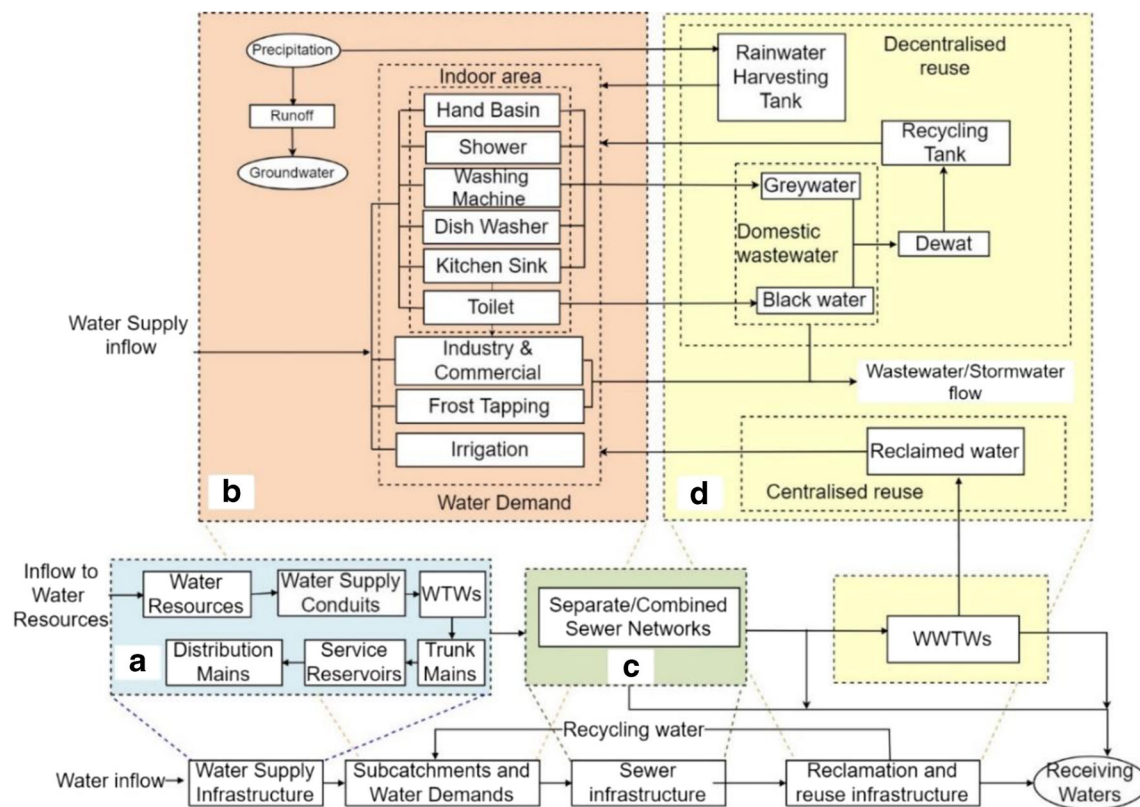


Fig. 1 UWS main subsystems and components in WM2: (a) potable water supply, (b) subcatchment, (c) sewerage, and (d) water resource recovery. Modified from Behzadian and Kapelan (2015a)

WM2 then calculates quantitative key performance indicators (KPIs) related to various aspects of the sustainability framework such as economic, social, and environmental factors (Behzadian and Kapelan 2015b). The model also calculates a number of KPIs related to environmental impact categories similar to those in LCA such as eutrophication, acidification, and GHG emissions. These KPIs are mainly calculated by multiplying the simulated water and energy flows by corresponding factors. Unlike the LCA, KPIs in WM2 can be calculated spatially for individual components or the entire UWS and temporally for each time step and aggregated for larger periods. The metabolism performance simulation and corresponding KPIs in WM2 are limited to the operational stage of the UWS as construction, maintenance, and demolition phases have a small impact on environmental impact analyses compared to the operational phase (Jeong et al. 2015; Lane et al. 2015). That being said, all impacts of fabrication and transportation of materials and chemicals in the operational phase are considered in WM2. The spatial limit of the UWS in WM2 is the administrative limits of an urban water utility. The input data in WM2 are divided into three sections of time series, the UWS components, and other associated data. The time series data include daily inflows to water resources and daily weather data. The data required in UWS components are defined connections (i.e.

topology) between the components, their operation in each subsystem and capacity for storage (i.e. water resources and service reservoirs), treatment (i.e. WTWs and WWTWs), and conveyance (i.e. water supply conduits, trunk/distribution mains, and sewerage). Other necessary information for operation is also defined here in UWS components such as energy and chemicals used, operational costs, leakage, and removal efficiency of pollutants. Four spatial scales of indoor, local area, subcatchment, and city are modelled in WM2 (Behzadian et al. 2014b). Water demand profile and energy uses for appliances and fittings are defined at household level, while the local area level defines commercial and outdoor water demands (i.e. garden watering and irrigation) as well as parameters for rainfall-runoff modelling. The specifications of decentralised water resource recovery facilities such as rainwater harvesting and greywater recycling tanks are defined at both local area and subcatchment levels. These specifications include storage capacity, costs, energy use, pollutant removal efficiency, and source/sink of water reuse. The average concentration of pollutants at household/industrial level and various urban surfaces (i.e. roof, road, pavement, and pervious areas) at local area level are defined as other input data. The factors required to calculate KPIs such as embodied energy, GHG emissions, and other environmental impacts are the secondary data used in

WM2 that can be taken from the relevant literature. Further details of this information on WM2 can be found in Behzadian et al. (2014b).

WM2 was chosen here among similar tools due to its capacity to quantify various flows such as water, energy, and environmental impacts simultaneously through a metabolism framework. For instance, UWOT (Makropoulos et al. 2008) and UVQ (Mitchell and Diaper 2005) are demand-oriented approaches at different spatial scales and proven tools for water recycling modelling. However, they are mainly limited to a couple of impact categories (water and energy) and cannot consider the entire main UWS components in the modelling of the urban water cycle. WM2 has been used for multiple purposes such as water recycling (Behzadian et al. 2018) and reliability/resilience assessment (Morley et al. 2016) and demonstrated in several case studies. For example, it has been used for comparison in rainwater harvesting, greywater recycling, and desalination scenarios under population growth on the Galapagos Island, Ecuador (Reyes et al. 2017); for optimisation of non-conventional water source schemes to minimise water demand and reduce local flooding in Oslo (Behzadian et al. 2018); and in support of the decision analysis of increased water sources or pipeline rehabilitation in European cities (Morley et al. 2016; Behzadian and Kapelan 2015b). More recently, it has been used to compare centralised and decentralised water reuse options (Landa-Cansigno et al. 2018).

Key performance indicators

A set of five KPIs, as shown in Table 1, was rigorously selected from the three angles of the WEP nexus to carry out the performance assessment of water reuse strategies. The definition and assumptions of these KPIs are outlined here: (a) *Reliability of water supply* is defined as the ratio of the total water supplied to the total water demand over the planning horizon and is expressed in percentage (Behzadian and Kapelan 2015a). Hence, fully supplied water demands have a reliability of 100% and any reliability less than that indicates a lack of water supply over the planning horizon; (b) *Potable water* is defined as the amount of potable water supplied from conventional water resources. Note that the total water supplied is the sum of potable water and reuse water used to fulfil

water demands in UWS; (c) *Net energy* is the result of balancing both consumed (i.e. caused) and avoided energy in the UWS components. Consumed energy includes both direct energy used from fossil fuels/grid electricity and indirect/embodied energy obtained from chemicals and materials used in the operational phase. The avoided energy includes renewable energy as electricity produced from biogas combustion in WWTWs and the embodied energy retrieved from resource recovery in WWTWs; (d) *GHG emissions*, expressed in kg CO₂-eq, are calculated as the direct and indirect CO₂ emitted from the UWS components, plus fugitive emissions of CO₂, methane (CH₄), and nitrous oxide (N₂O) in WWTWs. The direct emissions include burning fossil fuels and those used for mains electricity generation, while indirect emissions are comprised of those used for embodied energy in chemicals, materials, and resource recovery. The factors used for conversion to kg CO₂-eq are 28 for CH₄ and 265 for N₂O, according to the IPCC (2014); (e) *Eutrophication potential (EP)*, expressed in kg Phosphates equivalent (PO₄-eq), is calculated based on the direct presence of phosphorus (P), nitrates (NO₃), and chemical oxygen demand (COD) in effluents, emissions of ammonia (NH₃) in sludge management, and indirect impact caused by the production of electricity, fossil fuel, chemical, and sludge disposal (Behzadian et al. 2014b). The conversion factors to PO₄ are 0.35 for NH₃, 0.022 for COD, and 3.06 for P (Heijungs et al. 1992).

The pollution (Table 1) is estimated here based on the load mass balance of the following pollutants: COD, Total Suspended Solids (TSS), Total Nitrogen (TN), and Total Phosphorus (TP), using user-input concentrations (mg/L). These are defined here through average values from the literature review. Pollutant mass flows are tracked down within subcatchments and wastewater components in UWS. Removal of pollutants from a conventional activated sludge considered for this study was 91% BOD, 97% TSS, 94% COD, and 60% TN and TP (SITRATA 2017). The changes to four KPIs (i.e. potable water, energy, GHG emissions, and EP) in water reuse strategies are evaluated with respect to business-as-usual (BAU) (i.e. ‘do nothing’ over the planning horizon). Hence, these KPIs are also presented as a percentage of change relative to the BAU.

Case study

The suggested methodology was demonstrated in a real-world case study in the metropolitan area formed by San Francisco del Rincon (SFR) and Purisima del Rincon (PR) cities, Guanajuato in Mexico (Fig. 2).

The UWS of this case study is one of the few urban areas planned for water reuse in the country with the following description. There are 22 boreholes at depths of 70–300 m (SAPAF 2017) withdrawing groundwater from Turbio Aquifer. This is the only water supply for the area and requires

Table 1 Description of key performance indicators

Nexus component	KPI	Unit
Water	Reliability of water supply	%
	Potable water	m ³ /year
Energy	Total energy	kWh/m ³ /year
Pollution	GHG emissions	kg CO ₂ -eq/m ³ /year
	Eutrophication potential (EP)	Kg PO ₄ -eq/m ³ /year

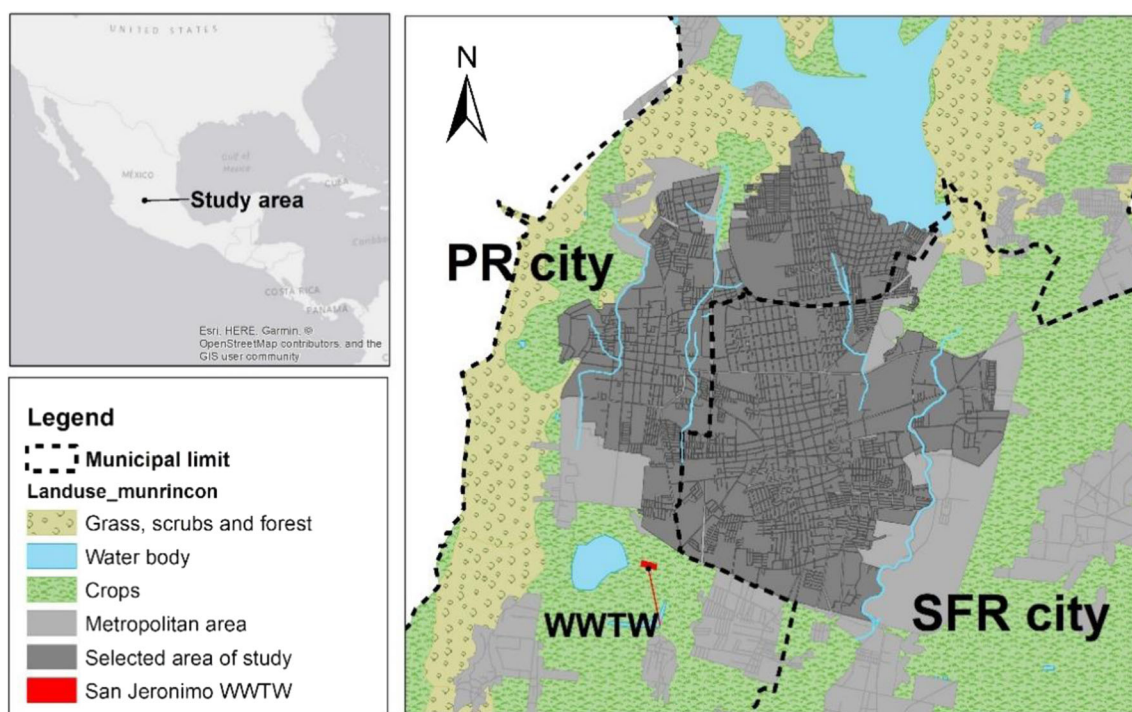


Fig. 2 Location of the case study

onsite chlorination according to the national potable water guideline (NOM-127-SSA1 1994). Potable water is stored in elevated tanks and then distributed by gravity to consumers with considerable leakage, i.e. 40–50% (CEAG 2014). Potable water is used for domestic, industrial, and public sectors in both cities. The domestic sector has 114,150 inhabitants spread over 31,261 households, but only 80% (24,751) of the houses have a potable water service, thus the population served numbers 111,600 only (INEGI 2010). This sector demands 89% and 71% of the total potable water in PR and SFR, respectively. Daily consumption per capita varies from 90 to 180 L/day in the region (CEAG 2017). The industrial and commercial sectors are composed of more than 2000 businesses of various sizes. Some are as small as food stalls with 2–4 workers and as large as shoe or automobile component manufacturing businesses with more than 150 workers (DENUE 2015). In total, they account for 8% and 23% of the total water demand in PR and SFR, respectively. The public sector includes water demands in hospitals, schools, and the irrigation of parks, sports facilities, and green lanes. Public demand accounts for 2.7% in PR and 5.4% in SFR (CEAG 2017). Although these percentages are reported for the entire municipality, it was assumed to be equal for the cities. The water demand flows per sector were calculated here by multiplying such percentages per water withdrawal flows after leakages.

Wastewater discharged into the sewerage network covers 99% of urban households that also receive potable water. Sewerage is a combined network with a total capacity of

43,200 m³/day. Each city has individual sewer networks, but both discharge the wastewater into “San Jeronimo” WWTW with an average treatment capacity of 21,600 m³/day. The overflows from the sewer network and WWTW discharge into the Turbio River as receiving water. The WWTW uses an activated sludge treatment coupled with screening and degritting, primary and secondary clarifiers, and a disinfection stage using chlorination or UV lamps. The plant was designed to treat the effluent at a quality of 30 mg BOD/L in order to comply with the non-potable water reuse guideline in Mexico (NOM-003-SEMARNAT 1997). Reclaimed water is mainly distributed for urban irrigation and soil compaction through trucks with a tank capacity of 20 m³. Water reuse reached only 1% of the wastewater inflow in 2015. This estimation might increase due to the construction of reclaimed water networks with a capacity of 250 m³/day. An anaerobic digester stabilises the sludge and produces biogas at a rate of 47.5 m³/h. The biogas is stored in a pressure container from which 40% of the total volume produces electricity at a rate of 0.03 kWh/m³ (SITRATA 2017). The remaining biogas is burned before being released into the atmosphere. Dewatered stabilised sludge is often deposited into agricultural fields nearby, with the remaining sludge and grit waste transported to landfill. A summary of the main UWS characteristics is shown in Table 2.

Model setup and input data

The case study including both cities was considered to be the boundary of the urban area, i.e. the highest spatial level in

Table 2 Summary of main UWS characteristics of the case study

		Total	SFR	PR	Reference
Local area	Area (ha)	2844	1615	1229	INEGI (2016)
	Pervious area (%)	–	26	31	
	Impervious area (%)	–	58	56	
	Roof area (%)	–	16	13	
	Population served (inhabitants)	111,600	69,169	42,431	INEGI (2010)
	Households with access to potable water (number)	24,960	15,614	9344	
	Average occupancy per household	–	4.43	4.54	
Water resource	Water boreholes (Qty.)	22	12	10	SAPAF (2017) SAPAP (2017)
	Annual withdrawals in 2015 ($\times 10^3 \text{ m}^3/\text{y}$)	9477	6105	3372	
	Energy (kWh/m^3)	–	0.40	0.44	
	Leakages (%)	–	40	53	CEAG (2014)
Annual water demand	Total water demand ($\times 10^3 \text{ m}^3/\text{y}$)	5451	3843	1608	CEAG (2017) SAPAF (2017) SAPAP (2017)
	Domestic demand ($\times 10^3 \text{ m}^3/\text{y}$)	4166	2734	1432	
	Public use and irrigation ($\times 10^3 \text{ m}^3/\text{y}$)	251	207	44	
	Industrial demand ($\times 10^3 \text{ m}^3/\text{y}$)	1034	902	132	
Sewer networks	Transportation capacity (m^3/day)	47,300	–	–	SITRATA (2017)
Wastewater and resource recovery	Plant capacity (m^3/day)	21,600	–	–	
	Energy use (kWh/m^3)	0.38	–	–	
	Biogas production (m^3/h)	47.5	–	–	
	Energy production (kWh/m^3)	0.03	–	–	

WM2 (Landa-Cansigno et al. 2018). Each city represented one subcatchment (SB) and therefore the two subcatchments considered were SB1 (San Francisco del Rincon city or SFR) and SB2 (Purísima del Rincon city or PR). It was assumed that each subcatchment is made up of seven local areas with various sizes and specifications (Table 3). Each local area comprises a number of similar indoor areas (households), combined with industrial/commercial sectors and outdoor areas. Figure 3 presents the schematic layout of the UWS components in the case study.

The profile of various water demands detailed in Table 3 was calculated for each local area based on the annual water demand in Table 2 multiplied by the proportion of the area and inhabitants in the corresponding subcatchment. Irrigation demand (WD_i) is calculated as

$$WD_i = A_i \times I_f \times a \times 0.001 \left(\frac{\text{m}^3}{\text{L}} \right) \quad (1)$$

where A_i is the area of irrigation (m^2), I_f is the water per square metre in the area (5 L), and a is a correction factor assuming irrigation is undertaken once every 3 days (0.5). There is no available analysis for allocation of water demand to household appliance and fittings in the case study. Hence, it

is assumed that the domestic water demand profile for all local areas includes 32% for toilet flushing, 22% for shower, 15% for washing machine, 15% for kitchens, 9% for hand basin, and 6% for irrigation including garden watering as recommended by Parker and Wilby (2013). No dishwasher is considered for indoor water demand in the UWS.

The calibration process involved a comparison between monthly observed and simulated water demand in 2015–2016. The first-year data was setup for calibration and the subsequent year for validation. The monthly water demand profiles per local area were adjusted during the calibration process, for example, assuming that there is no irrigation demand during July–September during the rainy season. Stormwater/wastewater subsystems were calibrated by adjusting the storage capacity, sewer network, perviousness and imperviousness, and rainfall-runoff coefficients in local areas. The calibration performance was evaluated by a number of statistical parameters, i.e. RSR, NSE, Pbias, and correlation coefficient that were compared against recommended values reported by Moriasi et al. (2007).

In addition to the data presented in Table 2, the main input data of the UWS are briefly described here and presented in Table 4. The daily and monthly water withdrawals were

Table 3 Specifications of the subcatchments (SBs) and local areas (LAs)

SB No.	No. of LAs	Area (ha)	Inhabitant	No. of households	Industrial demand (m ³ /day)	Irrigation demand (m ³ /day)
SB1 (SFR)	2	81	3458	781	120	15
	2	162	6917	1561	240	30
	2	323	13,835	3123	480	60
	1	485	20,750	4684	720	90
SB2 (PR)	2	62	2121	467	15	5
	2	123	4242	934	30	10
	2	246	8489	1870	60	20
	1	368	12,727	2803	90	30

acquired for two continuous years of 2015 and 2016 for each city using primary data from local water utilities (SAPAP 2017; SAPAF 2017). Data on wastewater inflows and outflows were obtained for the period between 2015 and 2016 on a monthly scale (SITRATA 2017). Population data were obtained from the period 1990–2010 in various censuses from the National Statistical Institute of Mexico (INEGI). Population growth was estimated to be 1–3% using an

arithmetic model (not shown here). Temperature and precipitation were obtained for the period between 1962 and 2011 from the ‘Guanajal’ station (CLICOM 2016). Vapour pressure and relative humidity from ‘Guanajuato Observatory station’ provided by the National Meteorological Service in Mexico (SMN 2017). The permeable area (sum of the green spaces and parks) data were obtained through the land use map database of the area (INEGI 2016). It was assumed that the runoff

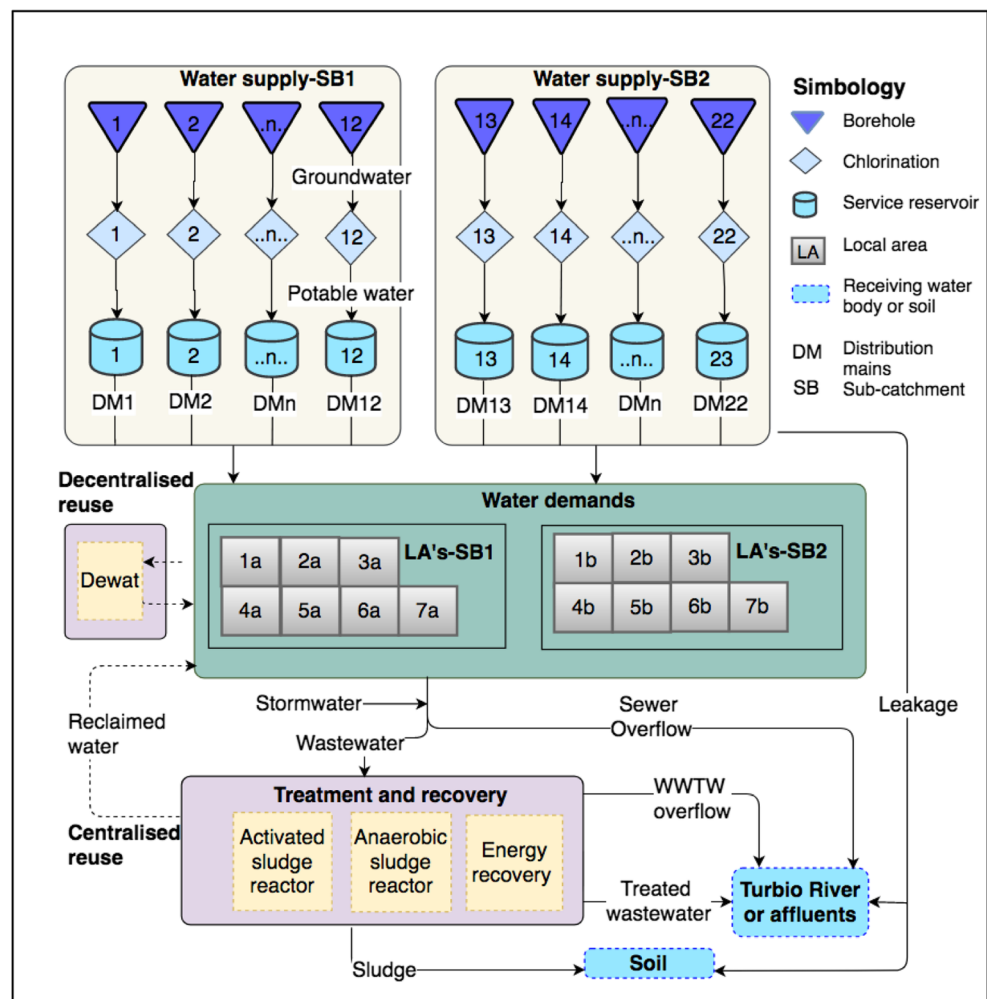
Fig. 3 Schematic UWS layout in the Rincon cities, Mexico


Table 4 Main input data and key assumptions of the case study in WM2 model

Category	Data and source
Climatic data	Daily recorded data of rainfall, maximum, average, and minimum temperature from 1962–2011. Station Guanajal (– 101.8 W, 21.0 N; 1767 masl) (CLICOM 2016). Monthly average vapour pressure and relative humidity. Station Guanajuato Observatory (SMN 2017).
Demographic data	Total population per city XI Census 1990, XII Census 2000, XIII Census 2010; Population counts 1995, and 2005 from the National Institute of Statistics and Geography (INEGI 1990, 1995, 2000, 2005 and 2010).
Potable water sub-systems	Daily water extraction, energy consumption, and chemical use (2015–2016) in San Francisco and Purisima, Mexico.
Wastewater inflow and effluent	Daily flows in 2015–2016 (SITRATA 2017).
Sludge	Monthly flow production, biogas production, and disposal rate 2014–2016 (SITRATA 2017).
Chemical inputs in UWS	Chlorine gas (Cl ₂) produced through mercury cell process 0.0007 kg/m ³ potable water Sodium hypochlorite 15% solution (NaOCl), 0.0008 kg/m ³ wastewater Iron chloride 40% in solution (FeCl ₃), 0.0054 kg/m ³ wastewater
GHG Emissions	Grid electricity in Mexico 0.458 kg CO ₂ /kg (SEMARNAT 2016) Cl ₂ 1.28 kg CO ₂ /kg (Wernet et al. 2016) NaOCl 0.96 kg CO ₂ /kg (Wernet et al. 2016) FeCl ₃ 1.02 kg CO ₂ /kg (Wernet et al. 2016).
Eutrophication	Electricity 4.6 × 10 ⁵ kgPO ₄ eq/kWh (Wernet et al. 2016) Cl ₂ 0.002 kg PO ₄ eq/kg (Wernet et al. 2016) NaOCl 0.0019 kg PO ₄ eq/kg (Wernet et al. 2016) FeCl ₃ 0.0026 kg PO ₄ eq/kg (Wernet et al. 2016).
Embodied energy	Cl ₂ 5.19 kWh/kg (Wernet et al. 2016) NaOCl 3.67 kWh/kg (Wernet et al. 2016) FeCl ₃ 3.92 kWh/kg (Wernet et al. 2016).
Fugitive emissions from sludge fertiliser	0.0143 kgCH ₄ /dkg _{sludge} (Liu et al. 2013) 0.2 KgNH ₃ -N/KgN _{sludge} (Foley et al. 2010) 0.00085 Kg N ₂ O/dkg _{sludge} (Liu et al. 2013).

coefficient was 0.4 and infiltration coefficient was 0.5 for an urban area. Characterisation factors of GHG emissions and eutrophication for the production of chemicals used in the water/wastewater treatment were obtained from the CML World 2001 method and embodied energy values from cumulative energy demand method from the Ecoinvent3 database (Wernet et al. 2016). Fugitive emissions were obtained from the literature (see Table 4). It was considered that grid electricity in Mexico emits 0.458 kg CO₂/kWh (SEMARNAT 2016). The study excludes the flow of materials used for the operational and maintenance phase of water distribution and sewer networks due to the lack of data in the case study.

Water reuse strategies

Nine hypothetical water reuse strategies from centralised and decentralised configurations (greywater and wastewater reuse) were considered for analysis and comparison.

Three adoption or uptake proportions (20%, 50%, and 100%) were selected in consultation with key experts in the case study to evaluate potentials of using water reuse strategies with a wide range of uptake. From these nine strategies were defined and were composed of three centralised strategies (C20, C50, C100) that reuse treated wastewater of the WWTW, six decentralised strategies including three greywater ones (DG20, DG50, DG100) that reuse hand basin, washing machine, and shower effluents, and three wastewater ones (DW20, DW50, DW100) that reuse all domestic effluent. It was also assumed that the strategies will be implemented gradually in two time steps, at 10 and 20 years over a 30-year planning horizon. All strategies assumed that water reuse will be for toilet flushing, public irrigation, and industry. DG and DW strategies were assumed to use a membrane biological reactor (MBR) for greywater and wastewater treatment. Each household has a recycling tank with a capacity

of 0.5 m³. The stormwater and domestic sewage quality were assumed to be according to a range of concentrations reported in the literature for five pollutants (BOD, COD, TSS, TN, and TP) given in Table 5.

The energy required for the transportation of treated wastewater in water reuse strategies was estimated based on the physical level difference and pipeline head losses between the WWTW, or DEWATS and six local area tanks (three for each subcatchment) where water reuse is transported and used. The transportation distances and level differences were estimated based on the digital elevation model and the land use maps in the case study (INEGI 2016). As such, distances were between 2 and 5 km and the level differences were between 20 and 50 m. Note that the energy required and the pipeline head loss based on the Hazen-Williams equation assume that recycled water has a continuous flow with velocity of 1 m/s and pump efficiency of 0.80.

The energy required for decentralised treatment was considered to be 0.93 kWh/m³, using reference values for a local area treatment facility consisting of screening, sand filter, MBR, and chlorine disinfection. Such values were assumed for a treatment facility of 5000 m³/day capacity according to Longo et al. (2016). Energy inputs per cubic metre of water reused are shown in Table 6.

Results and discussion

Water-energy-pollution nexus

The metabolism-based performance of the nine strategies (Table 4) was simulated for the case study by using WaterMet² and was compared to the BAU with respect to the six assessment criteria (Table 1). The reliability of water supply over the planning horizon is almost 100% in the BAU (i.e. 99%). For water reuse strategies with adoption proportions equal to or above 50%, the total water demand is fully supplied (100%). When analysing an annual average of potable water supply in Fig. 4, strategies with higher adoption proportions can replace a larger

proportion of potable water supply with water reuse. Both centralised and decentralised wastewater reuse (C and DW) seem to have relatively similar proportions of potential water reuse, which is higher than those in decentralised greywater reuse strategies (DG) in all uptake proportions.

Figure 5 shows the percentage of changes of four KPIs relative to the BAU for the nine strategies over the planning horizon. It is arguable that the most influential water reuse strategy is decentralised using domestic wastewater with 100% adoption proportion (DW100) which provides the greatest reductions for the potable water supply (27%), the EP (29.2%), and GHG emissions (17.8%), although the largest reduction in energy use (11.5%) is obtained through centralised water reuse using urban wastewater with 100% adoption proportion (C100). The application of various water reuse strategies is observed to have both positive and negative effects between the three WEP nexus elements. More specifically, all water reuse strategies would lead to saving potable water although it has relatively similar proportions in centralised and decentralised wastewater reuse strategies that are larger than those in decentralised greywater reuse. Reduction of GHG emissions also occurs for all water reuse strategies although their amounts for decentralised water reuse using domestic wastewater are much higher than other water reuse strategies (i.e., the reduction is almost two times greater in decentralised and five times greater in centralised greywater reuse strategies). This can be due to mainly decreasing the unused biogas in the UWS as a result of less domestic sewage being discharged into sewers/WWTWs and, also, less electricity being required for water withdrawals, treatment, and transportation within the water supply infrastructure.

Although all water reuse strategies would have positive impacts upon almost all KPIs in UWS, centralised strategies result in both positive and negative impacts simultaneously on KPIs (i.e. positive for potable water supply, GHG emissions and energy use and negative for EP). More specifically, the EP is significantly reduced in decentralised wastewater reuse compared to decentralised greywater reuse (for example, up to 29.2% in DW100 relative to 8.6% in DG100), whilst centralised wastewater reuse would increase (i.e. deteriorate)

Table 5 Pollutants concentration in mg/l selected for this study

Effluent	BOD	COD	TSS	TN	TP	Reference
Hand basin	101	208	20	5.1	3.3	Cardoso and Antunes (2017)
Kitchen sink	700	900	450	60	15	Antonopoulou et al. (2013); Li et al. (2009)
Washing machine	200	400	200	15	31	Vakil et al. (2014); Antonopoulou et al. (2013); Li et al. (2009)
Shower	200	300	200	15	5	Cardoso and Antunes (2017); Li et al. (2009)
Toilet	770	2000	1000	170	20	Molla (2013)
Runoff	10	70	60	1	1	Metcalf and Eddy (2003)
Industrial	1200	1500	1000	100	60	

Table 6 Energy demands in water reuse facilities in kWh per cubic metre of water reused

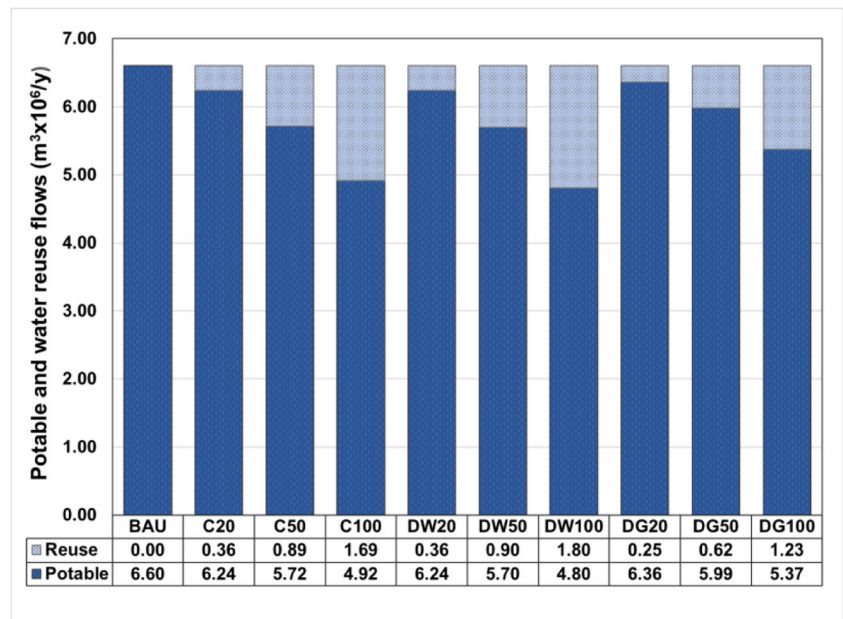
Type	Strategies	Treatment*	Transportation	Total
Centralised	C20	0.380	0.145	0.525
	C50	0.380	0.204	0.584
	C100	0.380	0.223	0.603
Decentralised domestic wastewater	DW20	0.930	0.123	1.050
	DW50	0.930	0.162	1.089
	DW100	0.930	0.221	1.148
Decentralised greywater	DG20	0.930	0.136	1.063
	DG50	0.930	0.181	1.108
	DG100	0.930	0.214	1.141

*Energy demands in centralised strategies corresponds to that in the WWTW

EP. This can be due to the fact that pollutants (mainly phosphorus) in centralised water reuse is recycling in the UWS and hence increases the load of contaminants into receiving water through the overflow of untreated effluent during heavy rainfall or the discharge of treated effluent. Such an effect does not exist in decentralised water reuse as domestic effluent into sewerage networks are reduced due to the diversion to DEWATS. This will be discussed in further detail later on in this section.

It is generally expected that greater changes of KPIs for each water reuse strategy take place in strategies with higher proportions of adoption. However, this is specifically inconsistent for energy use for all decentralised water reuse strategies in Fig. 5. More specifically, when comparing the total energy use of the water reuse strategies, it is evident that the highest energy savings are found to be related to centralised strategies (i.e. from 2.7% in C20 to 11.5% in C100), whilst decentralised strategies have almost negligible energy savings (0.1–0.3%) or even more energy use (i.e. – 0.6% in DW100).

The reason for these differences should be explored in the interactions between the caused and avoided energy in UWS components. The caused energy in UWS is that used in the potable water supply (i.e. for abstraction and treatment of raw water resources and distribution of potable water), centralised/decentralised water reuse facilities (i.e. for treatment and transportation), and avoided energy is the renewable energy generated in the WWTW. Table 7 shows a summary of annual energy for these four components in the UWS. As potable water is reduced in all water reuse strategies, it is expected that there will be less energy use for the water supply than that in the BAU, which is 0.753 kWh/m³. Caused energy for wastewater treatment and avoided energy for the generation of renewable electricity generation in the WWTW are relatively similar between the BAU and centralised strategies, although they are a little larger in centralised strategies due to 100% reliability levels. However, both caused and avoided energies are reduced in all decentralised strategies due to the reduction of domestic sewage discharging into wastewater

Fig. 4 Annual average of potable water supply and water reused flows over the planning horizon in the nine strategies

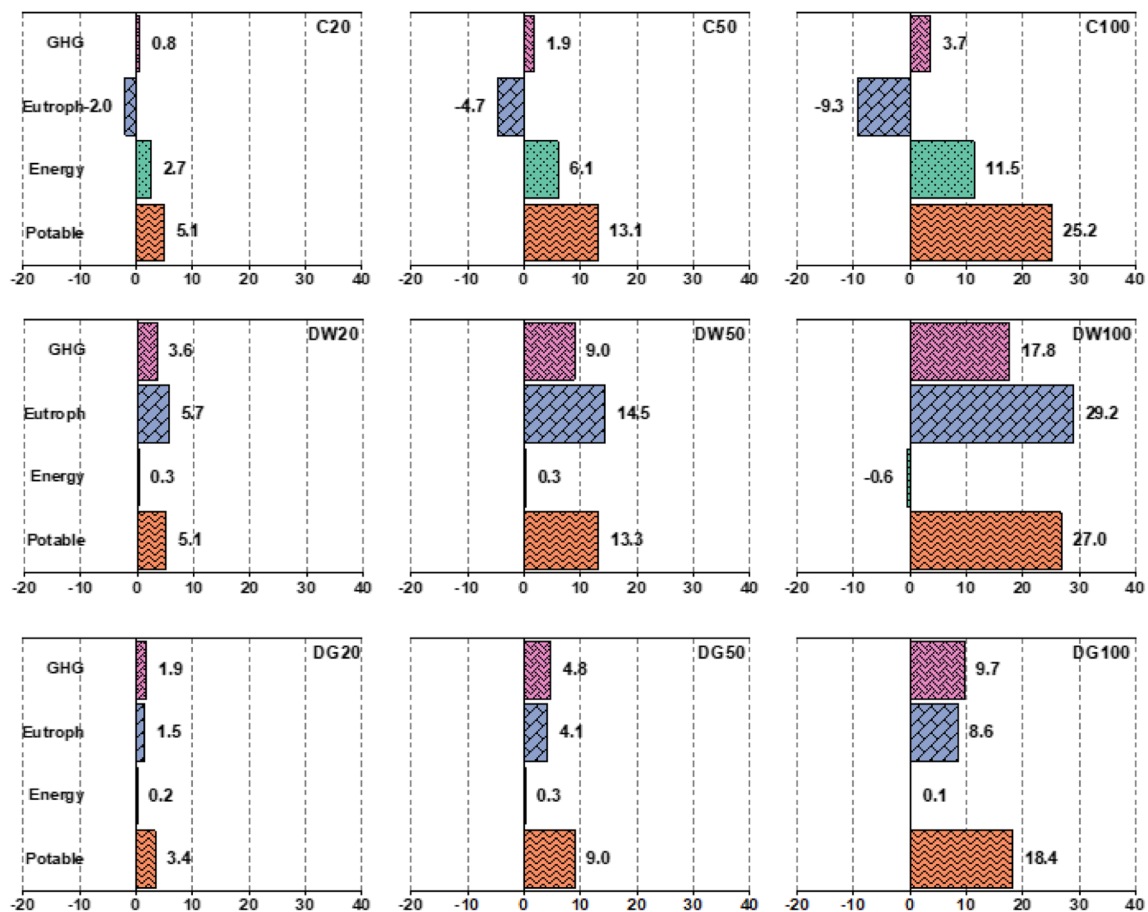


Fig. 5 Percentages of changes of four KPIs in the nine strategies with respect to the BAU over the planning horizon, representing positive for reduction rates and negative for increase rates

Table 7 Annual energy use/generation in the main UWS components; note that all except renewable electricity are expressed in kWh per cubic metre of water demand

Strategy	Total net energy (kWh/m ³)	Energy use			Energy generation Total renewable electricity (kWh)
		Water supply (kWh/m ³)	Wastewater treatment (kWh/m ³)	Reuse facilities* (kWh/m ³)	
BAU	1.152	0.753	0.399	0.000	190.74
C20	1.121	0.713	0.400	0.008	191.23
C50	1.082	0.654	0.400	0.027	191.31
C100	1.020	0.563	0.400	0.057	191.31
DW20	1.149	0.713	0.379	0.057	181.22
DW50	1.148	0.652	0.347	0.148	166.22
DW100	1.159	0.551	0.295	0.313	141.07
DG20	1.150	0.724	0.385	0.040	184.36
DG50	1.149	0.681	0.364	0.103	174.17
DG100	1.151	0.609	0.328	0.213	156.99

*For centralised strategies, energy of reused facilities contains only transportation energy as the treatment energy in centralised facilities is included in wastewater treatment

systems. This reduction is less for decentralised greywater reuse as toilet water flushing is still discharged into wastewater systems. Under the assumptions made for energy demand in water reuse facilities in this case study, the centralised facilities are more energy efficient than the decentralised ones (Table 6). As a result, although all water reuse strategies would lead to reduced energy use in the water supply, the decentralised strategies show almost no change in total net energy use (Table 7 and Fig. 5). Having said this, it should be noted that decentralised facilities are not necessarily more energy intensive. Hence, more energy efficient decentralised water reuse technologies (unlike energy intensive ones such as MBR) should be analysed to achieve an improved energy performance in the UWS. In addition, decentralised facilities reduce renewable energy generation in WWTW and this can have a negative impact on the energy performance of decentralised strategies. In this case study, however, the contribution of renewable energy in total energy use is almost negligible (< 1%) and hence no sensible change in the net energy can be envisaged in different strategies.

The electricity required for the UWS operation in the case study is supplied from the grid and less than 1% is generated onsite by the biogas produced in the WWTW. Grid electricity

in Mexico is mainly sourced by fossil fuels, 87% gas and coal and 13% other sources (Santoyo-Castelazo et al. 2014). As the wastewater inflow to the WWTW is reduced due to the implementation of decentralised strategies, the proportion of renewable energy produced is reduced in these strategies, as shown in Fig. 6. In particular, DW100 would experience the highest reduction of renewable energy generation (i.e. 26%) as the wastewater inflow to the WWTW decreases by 25% relative to the BAU. On the other hand, this proportion is not affected in centralised strategies as wastewater inflows remain equal compared with the BAU. Although the total amount of renewable energy generation in all strategies is minor compared with considerable fossil-based electricity from the grid, they are important since producing more clean energy is in agreement with international commitments for climate change mitigation and adaptation.

Figure 7 a shows the contribution of elements constituting GHG emissions and the EP in the UWS for the BAU and nine strategies. These elements are three gases (CO_2 , CH_4 , and N_2O) for GHG emissions and P, NH_3 , COD, NO_3 , and PO_4 emissions to water for eutrophication. As for GHG emissions, CO_2 emissions are the result of direct (i.e. fossil fuel and electricity) and indirect (i.e. chemicals) emissions in all UWS components, while CH_4 and N_2O are emitted from the WWTW. As can be seen, CH_4 is the major component (60%), contributing to GHG emissions, compared to CO_2 (33%) in the BAU. CH_4 in the WWTW is resulted from the unused biogas that is burned and released into the atmosphere. Consequently, those strategies that result in reducing wastewater inflow to the WWTW (i.e. decentralised strategies as described earlier) would lead to greater reduction in GHG emissions. As a result, the highest reduction can be obtained from decentralised water reuse using wastewater with a 100% adoption proportion (DW100) which reduces GHG emissions by 17.8%. Therefore, special attention should be paid to

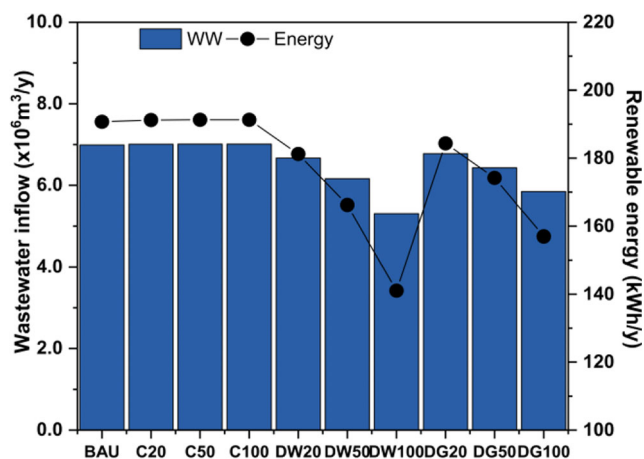


Fig. 6 Wastewater inflow vs renewable energy of the WWTW in the BAU and nine strategies

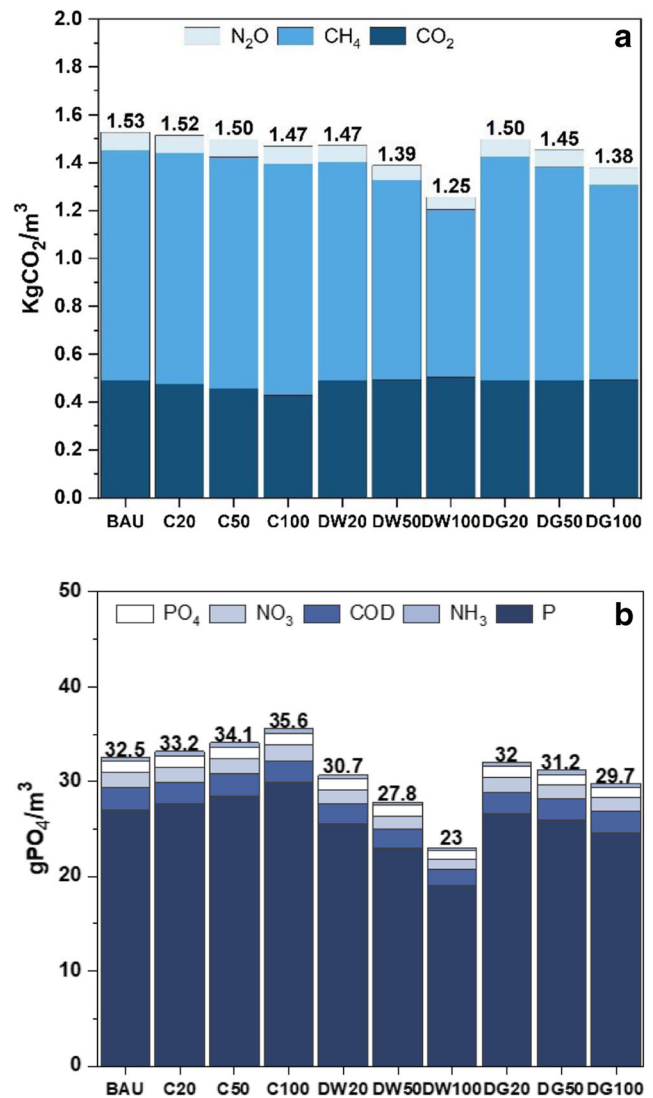


Fig. 7 Constituents of (a) GHG emissions and (b) eutrophication potential (EP) in the BAU and nine strategies; both are expressed as annual average of CO_2/PO_4 per cubic metre of water demand

increasing the potential biogas utilisation to reduce GHG emissions in the UWS.

A relatively similar trend exists for the impact of the water reuse strategies on the EP in Fig. 7b. In particular, the main component of the EP is made of P which is the result of effluents discharged into receiving water from either treated effluent of the WWTW, untreated effluents of sewer networks, or the WWTW. Similarly, decentralised strategies would reduce the wastewater inflows in both sewer networks and WWTW and hence the EP would reduce significantly. On the other hand, centralised strategies return the treated effluent of the WWTW to the UWS to be used for non-potable water demands (i.e. toilet flushing and irrigation). Although the pollutants in this treated effluent that is replaced with potable water are within acceptable limits for non-potable uses, the recycling effluent clearly adds more pollutant to the UWS

than the BAU. Once this additional load of pollutants is converted into wastewater, specifically in toilet flushing, the overall load of pollutants can increase in sewer networks and the WWTW. Consequently, the EP can increase slightly as seen in Fig. 7b for all centralised strategies.

Conclusions

The long-term performance assessment of a number of centralised and decentralised water reuse strategies in the integrated UWS was conducted in this paper by using an integrated framework of the WEP nexus and urban water metabolism. The water reuse strategies considered using both greywater at local scale and domestic/urban wastewater at local/urban scale. The modelling approach of urban water metabolism was considered to first integrate all main UWS components of the water supply, stormwater, and wastewater subsystems before incorporating the influence of the intervention strategies on other components of the urban water cycle.

From the WEP nexus perspective, decentralised water reuse strategies using domestic wastewater were found in this study to perform the best with respect to potable water saving, reductions of eutrophication and GHG emissions, while centralised strategies can provide the largest savings of energy use in the UWS. Having said this, centralised strategies can deteriorate eutrophication potential due to the discharge of more pollutants into the urban water cycle. The results show that the interaction between the WEP nexus elements can be quantified as a result of the metabolic performance simulation of integrated UWS. Consequently, the assessment of water reuse strategies with respect to WEP nexus criteria can unveil the direct and indirect influences between the nexus elements (i.e. water, energy, and pollution) that are either difficult to recognise or unexpected due to the complexity of the integrated UWS. The opposite influences can occur due to the complex and indirect interaction that might exist between the UWS components and overall system.

Although the current methodology used a typical real-world case study to explore the capabilities of the suggested framework, the findings obtained in this paper cannot be generalised for other UWS. For example, the adoption/uptake percentages of water reuse options must be tailored based on the socio-economic factors in the UWS. Hence, more test cases should be conducted on other real-world case studies in order to extract some general outcome with respect to the water-energy-pollution nexus for water reuse strategies.

Acknowledgements The authors acknowledge the information provided by the wastewater utility in Rincon cities (SITRATA), the potable water utility in Purisima del Rincon (SAPAP), the water utility in San Francisco del Rincon (SAPAF), the Guanajuato State Water Commission (CEAG), National Water Commission (CONAGUA), and National Meteorological Service (SMN), all in Mexico.

Funding Oriana Landa received a scholarship from the Mexican Science and Technology Council CONACYT (220075), the Mexican Public Education Secretary (SEP), and University College London.

Compliance with ethical standards

Conflict of interest The authors declare that they have no conflict of interest.

Open Access This article is distributed under the terms of the Creative Commons Attribution 4.0 International License (<http://creativecommons.org/licenses/by/4.0/>), which permits unrestricted use, distribution, and reproduction in any medium, provided you give appropriate credit to the original author(s) and the source, provide a link to the Creative Commons license, and indicate if changes were made.

References

- Antonopoulou G, Kirkou A, Stasinakis AS (2013) Quantitative and qualitative greywater characterization in Greek households and investigation of their treatment using physicochemical methods. *Sci Total Environ* 454–455:426–432. <https://doi.org/10.1016/j.scitotenv.2013.03.045>
- Behzadian K, Kapelan Z (2015a) Advantages of integrated and sustainability based assessment for metabolism based strategic planning of urban water systems. *Sci Total Environ* 527–528:220–231. <https://doi.org/10.1016/j.scitotenv.2015.04.097>
- Behzadian K, Kapelan Z (2015b) Modelling metabolism based performance of an urban water system using WaterMet2. *Resour Conserv Recycl* 99:84–99. <https://doi.org/10.1016/j.resconrec.2015.03.015>
- Behzadian K, Kapelan Z, Mousavi SJ, Alani A (2018) Can smart rainwater harvesting schemes result in the improved performance of integrated urban water systems? *Environ Sci Pollut Res Int* 25: 19271–19282. <https://doi.org/10.1007/s11356-017-0546-5>
- Behzadian K, Kapelan Z, Venkatesh G, Brattebø H, Særgrov S, Rozos E, Makropoulos C (2014a) Quantitative UWS performance model: WaterMet2, TRUST report, D33.2. <https://www.uwl.ac.uk/school-computing-and-engineering-0/watermet2-software-tool>
- Behzadian K, Kapelan Z, Venkatesh G, Brattebø H, Særgrov S, Rozos E, Makropoulos C, Ugarelli R, Milina J, Hem L (2014b) Urban water system metabolism assessment using WaterMet2 model. *Procedia Eng* 70:113–122. <https://doi.org/10.1016/j.proeng.2014.02.014>
- Bieker S, Cornel P, Wagner M (2010) Semicentralised supply and treatment systems: integrated infrastructure solutions for fast growing urban areas. *Water Sci Technol* 61:2905–2913. <https://doi.org/10.2166/wst.2010.189>
- Cardoso CM, Antunes NM (2017) Greywater treatment using a moving bed biofilm reactor at a university campus in Brazil. *J Clean Prod* 142:290–296. <https://doi.org/10.1016/j.jclepro.2016.07.162>
- Chang J, Lee W, Yoon S (2017) Energy consumptions and associated greenhouse gas emissions in operation phases of urban water reuse systems in Korea. *J Clean Prod* 141:728–736. <https://doi.org/10.1016/j.jclepro.2016.09.131>
- Chen Z, Ngo HH, Guo W (2012) A critical review on sustainability assessment of recycled water schemes. *Sci Total Environ* 426:13–31. <https://doi.org/10.1016/j.scitotenv.2012.03.055>
- CEAG (2014) Diagnostic of potable water and sanitation sectors (in Spanish)
- CEAG (2017) Diagnostic of potable water and sanitation sectors (in Spanish)

- CLICOM (2016) CLICOM daily climate data of the SMN through its CICESE web platform <http://clicom-mex.cicese.mx>. Accessed 19 February 2016
- DENUE (2015) National Statistical Directory of Economic Units in Mexico <http://www.beta.inegi.org.mx/app/mapa/denue/> Accessed 10 March 2018 (in Spanish)
- De Stercke S, Mijic A, Buytaert W, Chaturvedi V (2018) Modelling the dynamic interactions between London's water and energy systems from an end-use perspective. *Appl Energy* 230:615–626. <https://doi.org/10.1016/j.apenergy.2018.08.094>
- Domènech L (2011) Rethinking water management: from centralised to decentralised water supply and sanitation models. *Doc d'Anàlisi Geogràfic* 57:293–310
- Duong TH, Adin A, Jackman D, van der Steen P, Vairavamoorthy K (2011) Urban water management strategies based on a total urban water cycle model and energy aspects – case study for Tel Aviv. *Urban Water J* 8:103–118. <https://doi.org/10.1080/1573062X.2010.546861>
- EPA (2012) Guidelines for water reuse EPA/600/R-12/618. US Environmental Protection Agency, NRMRL Laboratory, US Agency for International, Washington
- Farooqui TA, Renouf MA, Kenway SJ (2016) A metabolism perspective on alternative urban water servicing options using water mass balance. *Water Res* 106:415–428. <https://doi.org/10.1016/j.watres.2016.10.014>
- Foley J, de Haas D, Hartley K, Lant P (2010) Comprehensive life cycle inventories of alternative wastewater treatment systems. *Water Res* 44:1654–1666. <https://doi.org/10.1016/j.watres.2009.11.031>
- Friedler E, Buttler D, Alfiya Y (2013) Wastewater composition. In: Larsen T, Udert K, Lienert J (eds) *Source separation and decentralization for wastewater management*. IWA Publishing, pp 241–257
- Geissdoerfer M, Savaget P, Bocken NMP, Hultink EJ (2017) The Circular Economy – a new sustainability paradigm. *J Clean Prod* 143:757–768. <https://doi.org/10.1016/j.jclepro.2016.12.048>
- Gu Y, Dong Y, Wang H, Keller A, Xu J, Chiramba T, Li F (2016) Quantification of the water, energy and carbon footprints of wastewater treatment plants in China considering a water–energy nexus perspective. *Ecol Indic* 60:402–409. <https://doi.org/10.1016/j.ecolind.2015.07.012>
- Heijungs R, Guinée JB, Huppes G, Lankreijer RM, Udo de Haes HA, Wegener Sleeswijk A, Ansems AMM, Eggels PG, Duin R van, Goede HP de (1992) *Environmental life cycle assessment of products: guide and backgrounds (Part 1)* CML, Leiden.
- Huang CL, Vause J, Ma HW, Yu CP (2013) Urban water metabolism efficiency assessment: integrated analysis of available and virtual water. *Sci Total Environ* 452–453:19–27. <https://doi.org/10.1016/j.scitotenv.2013.02.044>
- INEGI (1990) XI Census 1990. Institute of Statistics, Geography and informatics of Mexico. <https://www.inegi.org.mx/programas/ccpv/1990/default.html>. Accessed 20 Sep 2018 (in Spanish)
- INEGI (1995) I Population counts 1995. Institute of Statistics, Geography and informatics of Mexico. <https://www.inegi.org.mx/programas/ccpv/1995/default.html>. Accessed 20 Sep 2018 (in Spanish)
- INEGI (2000) XII Census 2000. Institute of Statistics, Geography and informatics of Mexico. <https://www.inegi.org.mx/programas/ccpv/2000/default.html>. Accessed 20 Sep 2018 (in Spanish)
- INEGI (2005) II Population count 2005. Institute of Statistics, Geography and informatics of Mexico. <https://www.inegi.org.mx/programas/ccpv/2005/default.html>. Accessed 20 Sep 2018 (in Spanish)
- INEGI (2010) XIII Census 2010. Institute of Statistics, Geography and informatics of Mexico. Available: <https://www.inegi.org.mx/programas/ccpv/2010/default.html>. Accessed 20 Sep 2018 (in Spanish)
- INEGI (2016) Municipal GeoStatistic Geographic Metadata Catalog. <http://www3.inegi.org.mx/sistemas/biblioteca/ficha.aspx?upc=702825217341> Accessed 04 Oct /2016 (in Spanish)
- IPCC (2014) Climate change 2014: synthesis report. Contribution of working groups I, II, III to the fifth Assessment Report the Intergovernmental Panel on Climate Change [Core Writing Team, R.K. Pachauri and L.A. Meyer (eds.)]. IPCC, Geneva, Switzerland, 151 pp.
- Jeong H, Minne E, Crittenden JC (2015) Life cycle assessment of the City of Atlanta, Georgia's centralized water system. *Int J Life Cycle Assess* 20:880–891. <https://doi.org/10.1007/s11367-015-0874-y>
- Jiménez-Cisneros B (2014) Water reuse and recycling. In: Satinder A (ed) *Comprehensive water quality and purification*. Elsevier, Waltham, MA, pp 296–323
- Kenway S (2013) The water-energy nexus and urban metabolism - connections in cities. Security Research Alliance Technical Report No. 100.
- Kroeze C, Gabbert S, Hofstra N, Koelmans AA, Li A, Löhr A, Ludwig F, Strokal M, Verburg C, Vermeulen L, van Vliet MTH, de Vries W, Wang M, van Wijnen J (2016) Global modelling of surface water quality: a multi-pollutant approach. *Curr Opin Environ Sustain* 23: 35–45. <https://doi.org/10.1016/j.cosust.2016.11.014>
- Kumar P, Saroj DP (2014) Water–energy–pollution nexus for growing cities. *Urban Clim* 10:846–853. <https://doi.org/10.1016/j.uclim.2014.07.004>
- Landa-Cansigno O, Behzadian K, Davila-Cano D, Campos LC (2018) Water energy pollutants nexus assessment of water reuse strategies in urban water systems using metabolism based approach, Silva Afonso A, Rodrigues-Pimental C (Eds.) *Proceedings of the Water Efficiency Conference 2018*, 5–7 September, Aveiro Portugal: WATEF Network/University of Bath ISBN-13: 978-0-86197-198-5
- Lane JL, de Haas DW, Lant PA (2015) The diverse environmental burden of city-scale urban water systems. *Water Res* 81:398–415. <https://doi.org/10.1016/j.watres.2015.03.005>
- Larse T, Hoffmann S, Luthi C, Trffler B, Maurer M (2016) Emerging solutions to the water challenges of an urbanizing world. *Science* 352:928–933. <https://doi.org/10.1126/science.aad8641>
- Li F, Wichmann K, Otterpohl R (2009) Review of the technological approaches for grey water treatment and reuses. *Sci Total Environ* 407:3439–3449. <https://doi.org/10.1016/j.scitotenv.2009.02.004>
- Liu B, Wei Q, Zhang B, Bi J (2013) Life cycle GHG emissions of sewage sludge treatment and disposal options in Tai Lake Watershed, China. *Sci Total Environ* 47:361–369. <https://doi.org/10.1016/j.scitotenv.2013.01.019>
- Longo S, Mirko d'Antoni B, Bongards M, Chaparro A, Cronrath A, Fatone F, Lema JM, Mauricio-Iglesias M, Soares A, Hospido A (2016) Monitoring and diagnosis of energy consumption in wastewater treatment plants. A state of the art and proposals for improvement. *Appl Energy* 179:1251–1268. <https://doi.org/10.1007/s11367-016-1087-8>
- Makropoulos CK, Natsis K, Liu S, Mittas K, Butler D (2008) Decision support for sustainable option selection in integrated urban water management. *Environ Model Softw* 23:1448–1460
- Matos C, Pereira S, Amorim EV, Bentes I, Briga-Sá (2014) A Wastewater and greywater reuse on irrigation in centralized and decentralized systems—an integrated approach on water quality, energy consumption and CO₂ emissions. *Sci Total Environ* 493:463–471. <https://doi.org/10.1016/j.scitotenv.2014.05.129>
- Metcalfe and Eddy (2003) *Wastewater engineering, treatment, disposal and reuse*. McGraw-Hill, New York
- Mitchell VG, Diaper C (2005) UVQ: a tool for assessing the water and contaminant balance impacts of urban development scenarios. *Water Sci Technol* 52:91–98. <https://doi.org/10.2166/wst.2005.0435>
- Mo W, Wang R, Zimmerman JB (2014) Energy-water nexus analysis of enhanced water supply scenarios: a regional comparison of Tampa Bay, Florida, and San Diego, California. *Environ Sci Technol* 48: 5883–5891. <https://doi.org/10.1021/es405648x>

- Molla AS (2013) The potential of subsurface infiltration for the treatment of vermified effluents generated by the biofil toilet. Dissertation, Kwame Nkrumah University of Science and Technology
- Moriasi DN, Arnold JG, Van Liew MW, Bingner RL, Harmel RD, Veith TL (2007) Model evaluation guidelines for systematic quantification of accuracy in watershed simulations. *Trans ASABE* 50:885–900. <https://doi.org/10.13031/2013.23153>
- Morley M, Behzadian K, Kapelan Z, Ugarelli R (2016) Decision support system for metabolism-based transition to urban water systems of tomorrow. *Water Supply* 16:855–863. <https://doi.org/10.2166/ws.2016.007>
- NOM-003-SEMARNAT-1997 Mexican Official Guideline that establishes the maximum permissible limits of pollutants for treated water that are reused in public services. SEMARNAT, Mexico (in Spanish)
- NOM-127-SSA1 (1994) Mexican Official Guideline, Environmental health: water for use and human consumption-permissible limits of quality and treatments, health secretary of Mexico (in Spanish)
- Novotny V (2013) Water–energy nexus: retrofitting urban areas to achieve zero pollution. *Build Res Inf* 41:589–604. <https://doi.org/10.1080/09613218.2013.804764>
- Opher T, Friedler E (2016) Reducing inventory data requirements for scenario representation in comparative life cycle assessment (LCA), demonstrated on the urban wastewater system Tamar. *Urban Water J* 13:759–772
- Parker JM, Wilby RL (2013) Quantifying household water demand: a review of theory and practice in the UK. *Water Resour Manag* 27(4):981–1011. <https://doi.org/10.1007/s11269-012-0190-2>
- Reyes MF, Trifunović N, Sarma S, Behzadian K, Kapelan Z, Kennedy MD (2017) Mitigation options for future water scarcity: a case study in Santa Cruz Island (Galapagos Archipelago). *Water* 9:597. <https://doi.org/10.3390/w9080597>
- Santoyo-Castelazo E, Stamford L, Azapagic A (2014) Environmental implications of decarbonising electricity supply in large economies: the case of Mexico. *Energy Convers Manag* 85:272–291. <https://doi.org/10.1016/j.enconman.2014.05.051>
- SAPAF (2017) Databases. Potable water utility in San Francisco del Rincon, Mexico. (in Spanish)
- SAPAP (2017) Databases. Potable water utility in Purisima del Rincon, Mexico. (in Spanish)
- SEMARNAT (2016) Report of the National Emissions Registry-Advice: Available: www.geimexico.org/downloads/aviso_factor_de_emision_electrico_2015.pdf Accessed 16 Oct 2016 (in Spanish)
- Silva-Vieira A, Ghisi E (2016) Water-energy nexus in low-income houses in Brazil: the influence of integrated on-site water and sewage management strategies on the energy consumption of water and sewerage services. *J Clean Prod* 133:145–162. <https://doi.org/10.1016/j.jclepro.2016.05.104>
- Singh P, Kansal A (2018) Energy and GHG accounting for wastewater infrastructure. *Resour Conserv Recycl* 128:499–507. <https://doi.org/10.1016/j.resconrec.2016.07.014>
- Singh P, Kansal A, Carliell-Marquet C (2016) Energy and carbon footprints of sewage treatment methods. *J Environ Manag* 165:22–30. <https://doi.org/10.1016/j.jenvman.2015.09.017>
- SITRATA (2017). Wastewater databases. Wastewater utility in San Francisco and Purisima del Rincon cities. (in Spanish)
- SMN (2017) Monthly average climate database in Guanajuato Observatory station. National Meteorological Service in Mexico.
- Sušnik J (2018) Data-driven quantification of the global water-energy-food system. *Resour Conserv Recycl* 133:179–190. <https://doi.org/10.1016/j.resconrec.2018.02.023>
- Tsolas SD, Karim MN, Hasan MMF (2018) Optimization of water-energy nexus: a network representation-based graphical approach. *Appl Energy* 224:230–250. <https://doi.org/10.1016/j.apenergy.2018.04.094>
- Vakil KA, Sharma MK, Bhatia A, Kazmi AA, Sarkar S (2014) Characterization of greywater in an Indian middle-class household and investigation of physicochemical treatment using electrocoagulation. *Sep Purif Technol* 130:160–166. <https://doi.org/10.1016/j.seppur.2014.04.018>
- Valek MA, Sušnik J, Grafakos S (2017) Quantification of the urban water-energy nexus in México City, México, with an assessment of water-system related carbon emissions. *Sci Total Environ* 509:591:258–268. <https://doi.org/10.1016/j.scitotenv.2017.02.234>
- Venkatesh G, Brattebø H, Sægrov S, Behzadian K, Kapelan Z (2017) Metabolism-modelling approaches to long-term sustainability assessment of urban water services. *Urban Water J* 14:11–22. <https://doi.org/10.1080/1573062X.2015.1057184>
- Wang S, Chen B (2016) Energy-water nexus of urban agglomeration based on multiregional input-output tables and ecological network analysis: a case study of the Beijing-Tianjin-Hebei region. *Appl Energy* 178:773–783. <https://doi.org/10.1016/j.apenergy.2016.06.112>
- Wernet G, Bauer C, Steubing B, Reinhard J, Moreno-Ruiz E, Weidema B (2016) The ecoinvent database version 3 (part I): overview and methodology. *Int J Life Cycle Assess* 21:1218–1230. <https://doi.org/10.1007/s11367-016-1087-8>
- Wolman A (1965) The metabolism of cities. *Sci Am* 213:179–190. <https://doi.org/10.1017/CBO9781107415324.004>
- WWAP (2017) Wastewater: the untapped resource. United Nations World Water Assessment Programme Paris. <https://doi.org/10.1017/CBO9781107415324.004>, Summary for Policymakers
- Zhang X, Vesselinov V (2016) Energy-water nexus: balancing the trade-offs between two-level decision makers. *Appl Energy* 183:77–87. <https://doi.org/10.1016/j.apenergy.2016.08.156>
- Zheng B, Huang G, Guan Y, Zhai M, Liu L (2019) Metabolism of urban wastewater: ecological network analysis for Guangdong Province, China. *J Clean Prod* 217:510–519. <https://doi.org/10.1016/j.jclepro.2019.01.222>

Publisher's note Springer Nature remains neutral with regard to jurisdictional claims in published maps and institutional affiliations.