



## **UWL REPOSITORY**

**repository.uwl.ac.uk**

A Model for Suicide Bereavement: Based on a Meta-Ethnography of Adult's Experiences and Postvention.

Whitebrook, John ORCID logoORCID: <https://orcid.org/0000-0003-1651-3671>, Lafarge, Caroline ORCID logoORCID: <https://orcid.org/0000-0003-2148-078X> and Churchyard, Jamie ORCID logoORCID: <https://orcid.org/0000-0002-7551-0609> (2024) A Model for Suicide Bereavement: Based on a Meta-Ethnography of Adult's Experiences and Postvention. In: European Grief Conference 2024, 11-13 Nov 2024, Dublin, Ireland.

**This is the Presentation of the final output.**

**UWL repository link:** <https://repository.uwl.ac.uk/id/eprint/13204/>

**Alternative formats:** If you require this document in an alternative format, please contact: [open.research@uwl.ac.uk](mailto:open.research@uwl.ac.uk)

### **Copyright:**

Copyright and moral rights for the publications made accessible in the public portal are retained by the authors and/or other copyright owners and it is a condition of accessing publications that users recognise and abide by the legal requirements associated with these rights.

**Take down policy:** If you believe that this document breaches copyright, please contact us at [open.research@uwl.ac.uk](mailto:open.research@uwl.ac.uk) providing details, and we will remove access to the work immediately and investigate your claim.

### **Rights Retention Statement:**

# A Model for Suicide Bereavement: Based on a Meta-Ethnography of Adult's Experiences and Postvention.

## Meta-Ethnography: Synthesizing Qualitative studies:<sup>1</sup>

The synthesis of interpretive research

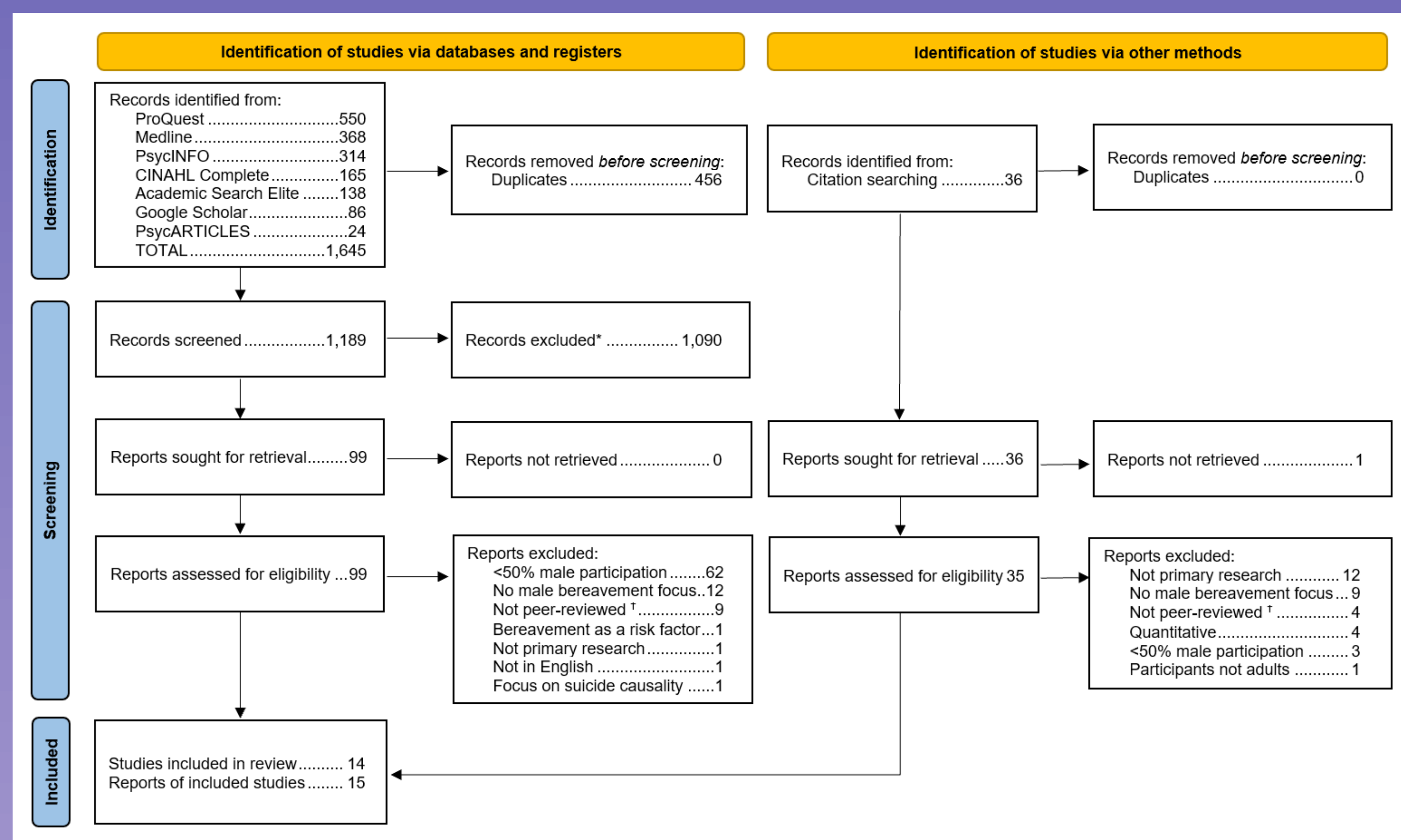
- Involves the translation of studies into one another
- The translation of studies takes the form of an analogy between and/or among the studies
- 'making a whole into something more than the parts alone imply'

## Improving reporting of meta-ethnography: The eMERGe reporting guidance:<sup>2</sup>

- To provide guidance to improve the completeness and clarity of meta-ethnography reporting
- Recommendations and good practice for all seven phases of meta-ethnography conduct and reporting were newly identified leading to 19 reporting criteria and accompanying detailed guidance

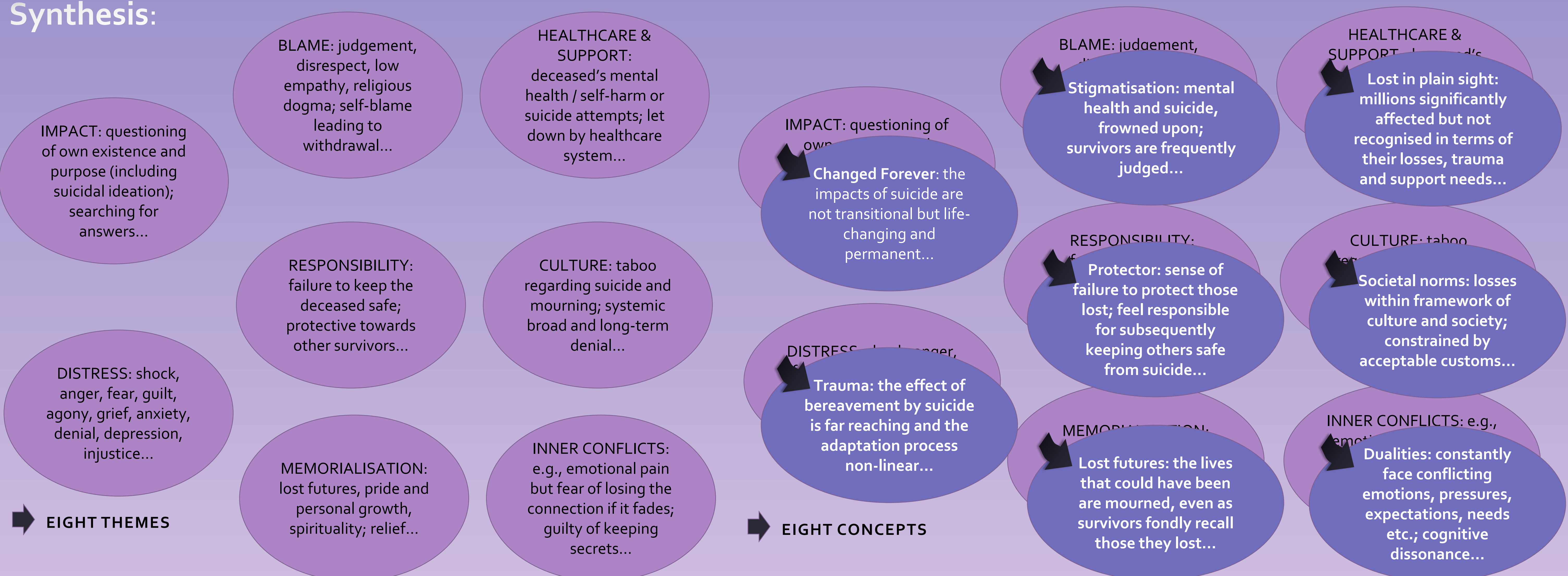
### PRISMA Flowchart:

Preferred Reporting Items for Systematic reviews and Meta-Analyses<sup>3</sup>



- Studies included had  $\geq$  50% male participation
- Analysis did not identify any aspects that could be exclusively attributed to males

## Meta-ethnography Synthesis:



## Proposed Suicide Bereavement Model:

