



UWL REPOSITORY

repository.uwl.ac.uk

Engrailed-2 (EN2) - a novel biomarker in epithelial ovarian cancer

McGrath, Sophie, Annels, Nicola, Madhuri, Thumuluru, Tailor, Anil, Butler-Manuel, Simon, Morgan, Richard ORCID logoORCID: <https://orcid.org/0000-0002-8721-4479>, Pandha, Hardev and Michael, Agnieszka (2018) Engrailed-2 (EN2) - a novel biomarker in epithelial ovarian cancer. BMC cancer, 18 (1).

<http://dx.doi.org/10.1186/s12885-018-4816-5>

This is the Published Version of the final output.

UWL repository link: <https://repository.uwl.ac.uk/id/eprint/7099/>

Alternative formats: If you require this document in an alternative format, please contact: open.research@uwl.ac.uk

Copyright: Creative Commons: Attribution 4.0

Copyright and moral rights for the publications made accessible in the public portal are retained by the authors and/or other copyright owners and it is a condition of accessing publications that users recognise and abide by the legal requirements associated with these rights.

Take down policy: If you believe that this document breaches copyright, please contact us at open.research@uwl.ac.uk providing details, and we will remove access to the work immediately and investigate your claim.


Rights Retention Statement:

RESEARCH ARTICLE

Open Access



Engrailed-2 (EN2) – a novel biomarker in epithelial ovarian cancer

Sophie Elena McGrath^{1,3}, Nicola Annels¹, Thumuluru K. Madhuri², Anil Tailor², Simon A. Butler-Manuel², Richard Morgan^{1,4}, Hardev Pandha¹ and Agnieszka Michael^{1*} 

Abstract

Background: Epithelial ovarian cancer is a common malignancy, with no clinically approved diagnostic biomarker. Engrailed-2 (EN2) is a homeodomain-containing transcription factor, essential during embryological neural development, which is dysregulated in several cancer types. We evaluated the expression of EN2 in Epithelial ovarian cancer, and reviewed its role as a biomarker.

Methods: We evaluated 8 Epithelial ovarian cancer cell lines, along with > 100 surgical specimens from the Royal Surrey County Hospital (2009–2014). In total, 108 tumours and 5 normal tissue specimens were collected. *En2* mRNA was evaluated by semi-quantitative RT-PCR. Histological sub-type, and platinum-sensitive/–resistant status were compared. Protein expression was assessed in cell lines (immunofluorescence), and in > 150 tumours (immunohistochemistry).

Results: *En2* mRNA expression was elevated in serous ovarian tumours compared with normal ovary ($p < 0.001$), particularly in high-grade serous ovarian cancer ($p < 0.0001$) and in platinum-resistant tumours ($p = 0.0232$). Median Overall Survival and Progression-free Survival were reduced with high *En2* expression (OS = 28 vs 42 months, $p = 0.0329$; PFS = 8 vs 27 months; $p = 0.0004$). Positive cytoplasmic EN2 staining was demonstrated in 78% of Epithelial ovarian cancers, with absence in normal ovary. EN2 positive high-grade serous ovarian cancer patients had a shorter PFS (10 vs 17.5 months; $p = 0.0103$).

Conclusion: The EN2 transcription factor is a novel ovarian cancer biomarker. It demonstrates prognostic value, correlating with worse Overall Survival and Progression-free Survival. It is hoped that further work will validate its use as a biomarker, and provide insight into the role of EN2 in the development, progression and spread of ovarian cancer.

Keywords: Epithelial ovarian cancer, Biomarker, Engrailed-2, Serous, Platinum-resistant

Background

Epithelial ovarian cancer (EOC) accounts for around 3% of all female cancers, but is the most lethal of the female reproductive tract cancers due to its predominantly advanced stage at diagnosis.

The symptoms of ovarian cancer are often very vague and may be misinterpreted as those of more common, benign conditions. As these symptoms are mostly related to the pressure effects of the growing tumour mass, they may only present when the primary mass is already very

large, or when the disease has disseminated to the peritoneum. The only clinically utilised biomarker for EOC is CA125, but this has not been approved for use in diagnosis as it may be elevated in benign gynaecological conditions such as endometriosis, and hence has a relatively low sensitivity of 50–62% for early stage disease, although this rises to 90% in advanced stage ovarian cancer [1–3]. CA125 level after the first cycle of chemotherapy and time to normalisation after the start of chemotherapy can be useful as prognostic biomarkers [4, 5].

Many women with advanced EOC at diagnosis will experience a good initial response to platinum-based chemotherapy and surgery, and may have a prolonged disease-free interval, but then often relapse with either

* Correspondence: a.michael@surrey.ac.uk

¹Oncology, School of Biosciences and Medicine, FHMS, University of Surrey, Leggett Building, Daphne Jackson Road, Guildford GU2 7WG, UK
Full list of author information is available at the end of the article



local or distant disease. Although relapsed disease can often be controlled with repeated platinum-based chemotherapy regimens, the progression-free relapse time interval will eventually become less than 6 months, indicating that the tumours have developed resistance to platinum.

There is a great deal of interest in biomarker research in EOC especially for early diagnosis as the disease is usually diagnosed at a late stage leading to a 5-year survival rate of only 30% for advanced-stage disease [6, 7]. In addition, there is increasing research into prognostic and treatment response biomarkers, especially focussing on the identification of molecular signatures that may indicate the early development of platinum-resistant disease. The search for novel clinical biomarkers in EOC has included analysis of various homeobox genes and their protein products. The expression of *HOXA9*, *HOXA10* and *HOXA11* confers a serous, endometrioid and mucinous phenotype respectively [8]. Kelly et al. also demonstrated that high expression of *HOXA13*, *B6*, *C13*, *D1* and *D13* were predictive of poor clinical outcome in EOC [9]. More recently, Miller et al demonstrated that *HOXA4*/*HOXB3* overexpression in high-grade serous ovarian cancer, correlated with a significantly shorter PFS, most likely as a result of reduced platinum sensitivity [10]. *PAX8*, is consistently over-expressed in high grade serous ovarian carcinomas but negative in breast adenocarcinoma so is often used by the pathologist to help determine the origin of certain pelvic serous tumours, especially if the primary tumour source is not always clearly evident [11–13].

Engrailed-2 (EN2) is a homeobox protein, essential during embryological neural development and typically only expressed in the normal adult Purkinje neurons and kidney tubular epithelial cells. EN2 is dysregulated in several cancer types, but at present there is no published data on its presence in EOC. *EN2* mRNA over-expression has been demonstrated in breast and prostatic adenocarcinoma whilst it is not expressed in normal prostate and breast tissue, or in benign disease [14, 15]. Secretion of EN2 protein into the prostatic ductal lumen was also noted, prompting further investigation of EN2 as a biomarker in prostate cancer. The presence of EN2 in urine was highly predictive of prostate cancer, with a sensitivity of 66% and specificity of 88.2% [15]. A linear relationship between urinary EN2 and prostate cancer volume has been demonstrated, along with a relationship between urinary EN2 and tumour stage [16, 17]. Elevated levels of urinary EN2 have also been detected in patients with urothelial bladder cancer, with an overall sensitivity of 82% and specificity of 75% [18]. A study of 226 patients with high grade urothelial bladder cancer showed that EN2 expression in cancer was strongly predictive of poor prognosis (manuscript in preparation).

Based on the paucity of diagnostic and prognostic biomarkers in EOC, and the growing body of evidence that

EN2 has a role in other epithelial cancers, we evaluated *En2* gene and EN2 protein expression in a broad selection of EOC cell lines and human tumour tissues and examined its relationship with clinical characteristics. We hypothesised that over-expression of *En2* mRNA and EN2 protein in human EOC tumours, may prove useful as a diagnostic, prognostic or treatment response biomarker, helping to influence treatment decisions, and ultimately improve overall survival rates.

Methods

Patients and controls

This study was approved by the London - Brighton & Sussex Research Ethics Committee (REC no: 09/H1103/50) and conducted between 2009 and 2014. Fresh ovarian tissue was obtained from patients at The Royal Surrey County Hospital, at the time of their primary surgery and then stored in RNeasy[™] (Sigma-Aldrich, UK) at -20°C . In total 108 tumours and 5 normal tissue specimens were collected. Normal human ovary RNA was purchased from OriGene Technologies Inc., USA.

A separate cohort of 90 pre-cut slides from formalin-fixed, paraffin embedded ovarian tumours were obtained from The Royal Surrey County Hospital, along with normal ovary and kidney slides as controls.

Human cell lines

All cell lines were obtained from the American Type Culture Collection (ATCC, USA), except for PEO1, PEO14 and PEO23 [Health Protection Agency (HPA, UK)], PEO4, PEA1 and PEA2 (donated by Professor Hani Gabra at Imperial College, University of London), and Fibroblasts (donated by the University of Birmingham). All of the human cell lines were adherent lines and were maintained according to the supplied protocol. In the matched pairs, the first set of cell lines (PEO1, PEO14, PEA1) were derived following the patients' diagnosis, while the second set (PEO4, PEO23, PEA2) were derived following the onset of acquired clinical platinum resistance. The normal human skin fibroblast cell line was used as a negative control and the melanoma cell line, A375M, was used as a positive control.

RNA extraction & cDNA synthesis from cell lines & human tumours

Total RNA was extracted from cell lines and homogenised tumours using the RNeasy[®] Plus Mini Kit (Qiagen, UK) according to the manufacturer's instructions. Extracted RNA was eluted in RNase-free water and quantified using a Nanodrop ND-1000 Spectrophotometer. cDNA was synthesised from total RNA using the Cloned AMV First Strand cDNA Synthesis Kit (Invitrogen, UK) following the manufacturer's protocol, using 1 μg of RNA. cDNA samples were stored at -20°C (10 ng/ μl).

Semi-quantitative RT-PCR

Semi-quantitative RT-PCR was performed using the Stratagene MX3005P Real Time PCR machine (Agilent Technologies, UK), measuring PCR product accumulation during the exponential phase of the reaction by SYBR green fluorescence (SYBR® Green JumpStart™ Taq ReadyMix™ Kit, Sigma-Aldrich, UK). Reaction conditions were 1 cycle of 94 °C for 10 min, 40 cycles of 30 s at 94 °C, and 1 min at 60 °C and 30 s at 72 °C. The forward and reverse primers for *En2* were 5' GAACCCGAA CAAAGAGGACA 3' and 5' CGCTTGTTCTGGAA CCAAAT 3', and for β -actin were 5' ATGTA CCCT GGCATTGCCGACA 3' and 5' GACTCGTCATACTC CTGCTTGT 3'. Relative expression was calculated using the ΔC_T comparative method ($2^{-\Delta C_T}$) [15, 18], and expression is shown relative to β -actin ($\times 100,000$).

Enzymatic immunofluorescent staining on cell lines

Cell lines were incubated for monolayer growth in 8-chambered polystyrene culture treated glass slides (BD Biosciences, UK) with appropriate media. Staining was compared in the absence of primary antibody, and in non-permeabilised and permeabilised cells (0.2% Triton X-100 (Sigma-Aldrich, UK). Cells were incubated in 5 μ g/ml Wheat-Germ Agglutinin cell membrane stain (Invitrogen, UK) for 10 min at 37 °C, before fixation with warm 4% paraformaldehyde, and blocking with 4% horse serum. Cells were incubated overnight in polyclonal goat anti-EN2 antibody (Abcam, UK) diluted 1:100 in 1% BSA (Sigma-Aldrich, UK) in PBS or in 1% BSA in PBS alone. This primary antibody has been used within the department for immunofluorescence work in multiple cells lines derived from varying tumour types, with consistent results. The secondary antibody Alexa Fluor 488 donkey anti-goat IgG (Invitrogen, UK) diluted 1:200 in 1% BSA/PBS was added, along with the nuclear stain TO-PRO-3 (Life Technologies, UK) diluted 1:400, at room temperature for 1 h. The slides were mounted and visualised using a Zeiss LSM 510 confocal laser scanning microscope, and a Plan-Apochromat 40 \times oil immersion objective. Images were recorded and analysed using ZEN 2009 capture software.

Enzymatic immunohistochemistry on patient slides and tissue arrays

Following the deparaffinisation and rehydration of slides, the heat mediated antigen retrieval method was utilised, using citrate buffer (10 mM, pH 6.0). Polyclonal rabbit anti-EN2 antibody (LS-B3477, LifeSpan Biosciences, Seattle, USA,) was diluted 1:20 in 1% BSA in PBS and applied overnight. 1% BSA in PBS alone was added to control slides. The bound primary antibody was detected using the R.T.U. VECTASTAIN ABC Kit (Vector Laboratories, USA) followed by DAB detection. Slides were

counterstained with Haematoxylin and mounted. The Royal Surrey County Hospital Pathology Department performed automated Haematoxylin & Eosin (H&E) staining on adjacent sections.

Slides were scored by two independent investigators for immuno-intensity of EN2 staining: 0, negative; 1, weak; 2, moderate; 3, strong. The percentage of immuno-positive cells was also recorded and scored from 1 to 4. The product of immuno-intensity and immuno-positivity ranged from 0 to 12, with 0–4 representing EN2 negative staining, and 5–12 representing EN2 positive staining [19]. All slides were reviewed by an independent gynaecological pathologist.

Statistical analysis

The GraphPad Prism software package was used to construct graphs and for statistical calculations. The significance level for all tests was set at 5%. The following symbols were used in diagrams/figures to denote levels of significance: -.* = $p < 0.05$; ** = $p < 0.01$; *** = $p < 0.001$; **** = $p < 0.0001$.

The one-way ANOVA with Bonferroni correction was performed for *En2* mRNA expression cell line data, using the mean CT value relative to β -actin [20–22]. For the different histological sub-types of human tumour tissue, the non-parametric Kruskal Wallis test with Dunn's correction was used. For comparison of two groups, the non-parametric Mann-Whitney *U*-test was used.

Comparative analysis of EN2 positive and negative tumour sections and tissue cores was conducted using the Chi-squared test [23].

All survival analyses were performed using the Log-rank (Mantel Cox) test.

Results

EN2 expression in epithelial ovarian cancer cell lines

RNA was extracted from cultures of 8 serous EOC cell lines, with the platinum-sensitivity status recorded for each of these. PEO1 represented a cell line derived from a platinum-sensitive, serous ovarian carcinoma. The PEO4 cell line was derived from the same patient, once they had developed platinum-resistant disease. Similarly, PEO14 and PEO23, and PEA1 and PEA2, were paired cell lines derived from the same patient before and after developing platinum-resistant disease.

Evaluation of the EOC cell lines revealed *En2* expression in the majority of cell lines, but to a varying degree (Fig. 1). The serous EOC lines PEO4 and PEA2 demonstrated significantly higher *En2* expression than fibroblasts ($p < 0.0001$ and $p < 0.01$ respectively). The platinum-sensitive/resistant paired serous cell lines all showed elevated *En2* expression, however there was a significant increase in the platinum-resistant lines, compared with their platinum-sensitive pairings. This was

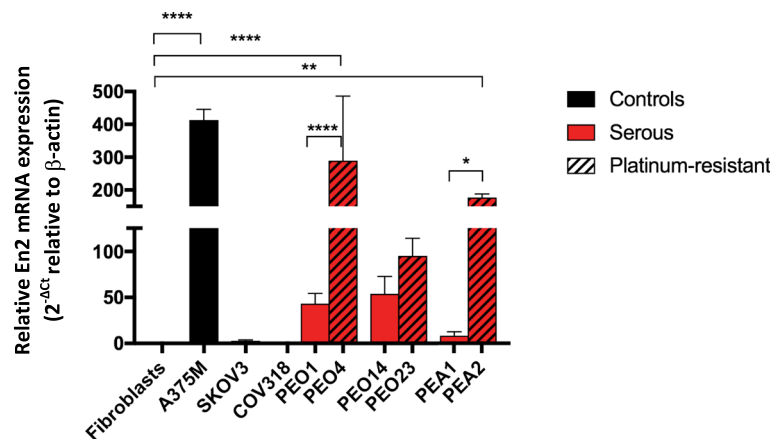


Fig. 1 *En2* mRNA expression in EOC cell lines and controls. Eight ovarian cancer cell lines were analysed by quantitative RT-PCR. Fibroblasts were used as a negative control and the A375M cell line as a positive control. *En2* mRNA expression is shown relative to β -actin ($\times 100,000$), using the ΔC_T comparative method ($2^{-\Delta C_T}$). Error bars represent the SD ($n = 3$) (* = $p < 0.05$; ** = $p < 0.01$; **** = $p < 0.0001$)

most notable with the PEO1/PEO4 ($p < 0.0001$) and PEA1/PEA2 ($p < 0.05$) paired cell lines.

For assessment of EN2 protein in EOC cell lines, enzymatic immunofluorescent staining was performed. This analysis demonstrated that EN2 protein was present in all of the EOC cell lines tested, in particular the paired platinum sensitive/insensitive cell lines, and the A375M melanoma cells, whilst it was not detectable in the normal skin fibroblast cell line (Fig. 2a). EN2 appeared to be predominantly expressed within the cytoplasm of the cancer cell lines, especially after the cells were permeabilised. There was no co-localisation of nuclear and EN2 protein staining to suggest the presence of nuclear EN2 in any of the cell lines stained (Fig. 2b). Co-localisation of cell membrane and EN2 protein staining suggested that EN2 is located in close proximity to the cell membrane (Fig. 2c).

EN2 expression in human ovarian tissue

We subsequently analysed 108 tumour samples, representing a variety of EOC histological sub-types (Table 1).

All serous ovarian and peritoneal tumours were grouped together as “pelvic serous carcinoma”, a term suggested by Nik et al. [24]. The relative expression of *En2* in normal ovary was very low in comparison to that of the malignant tumour samples. Although higher than the normal specimens, the *En2* expression in benign and borderline epithelial tumours was also much lower than the malignant tumours. *En2* expression in the serous ovarian group was significantly elevated in comparison to the normal specimen group ($p < 0.001$), namely > 1200 -fold higher, and this was maintained when the serous ovarian and peritoneal groups were combined as the “pelvic serous carcinoma” group ($p < 0.005$) (Fig. 3a). High-grade serous ovarian carcinomas (HGSOC) are the most common histological

presentation in the clinic, and represented 97% of the pelvic serous tumours within this data set. *En2* expression in the HGSOC group was again significantly elevated in comparison to the normal specimen group ($p < 0.0001$) (Fig. 3b).

Platinum-based chemotherapy treatment data was available for 75 of the high-grade serous epithelial tumours, including progression-free survival, which allowed us to determine the platinum-sensitivity-status of the tumours as defined by Blackledge [25]. *En2* expression was higher in platinum-resistant tumours compared to those that were platinum-sensitive, particularly when considering those patients who had already received some chemotherapy prior to surgery, i.e. the interval surgery cohort (Fig. 3c and d); $p = 0.0232$).

Survival analyses of the HGSOCs were performed based on low versus high *En2* mRNA expression. As *En2* expression had not previously been evaluated in ovarian cancer, we had little guide as to what constituted low or high expression, so we defined low expression as a CT value relative to β -actin < 1000 , and high expression as > 1000 . This took into consideration, the fact that all borderline, benign and normal ovarian tissue had mean CT values relative to β -actin < 100 . When analysing the HGSOC “interval surgery specimens”, both the median overall survival (OS) and median progression-free survival (PFS) in the high *En2* group were significantly lower than in the low *En2* group (28 vs 42 months for OS; $p = 0.0329$) (Fig. 3e), and 9 vs 18 months for PFS; $p = 0.0036$) (Fig. 3f)). This difference in PFS was even more pronounced when considering only the interval surgical HGSOCs (8 vs 27 months; $p = 0.0004$) (Fig. 3g)).

The prevalence and expression pattern of EN2 was also assessed at the protein level in two separate cohorts of patient tumours which enabled the combined

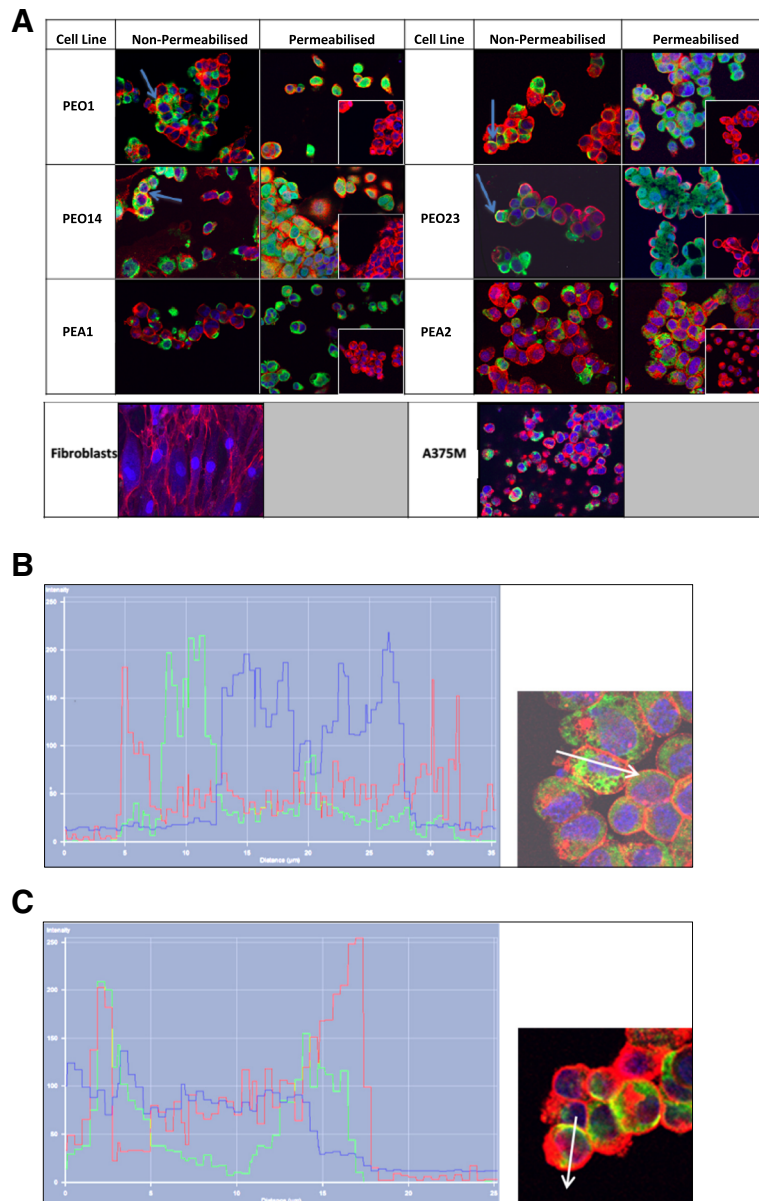


Fig. 2 EN2 expression via immunofluorescent staining of platinum-sensitive/–resistant paired serous ovarian cancer cell lines and controls. **(a)** EN2 fluorescent staining (green) was present in the cytoplasm of the serous cell lines, particularly evident in those that had been permeabilised. There was no EN2 staining evident in the permeabilised negative control of each cell line, where only secondary antibody was added (inset). There was no EN2 staining evident in the fibroblast cell line, whilst there was strong cytoplasmic staining in the melanoma A375M positive control cell line. TOPRO staining (blue) identified the cell nucleus and WGA staining (red) identified the cell membrane. Co-localisation of cell membrane WGA and EN2 protein staining (yellow) can be seen in some of the non-permeabilised cells (blue arrows). **(b)** Intensity profiles for each label along the length of the white arrow are shown in a PEA2 cell, and a PEO4 cell **(c)**, demonstrating the absence of EN2 in the nucleus, but close association with the cell membrane. The coloured peaks represent the cell membrane, nucleus, presence of EN2, and co-localisation of EN2 with the cell membrane, as detailed above

analysis of a large number of EOC specimens (111 HGSOCs in total). The summary demographic data for these cohorts are shown in Tables 1 and 2. Examples of the EN2 protein expression in human ovarian tissue are shown in Fig. 4.

Positive cytoplasmic EN2 staining was demonstrated in 78% of EOCs and over 65% of borderline tumours, whilst there was no staining in the majority of benign tumours and in all normal ovary specimens. Comparative analysis of the tumour sections confirmed a

Table 1 Summary data from the human ovarian tumours Cohort 1

Histology	N	Mean age (range)	Median Grade	Median Stage	Surgery (Number of patients)		Platinum Status (Number of patients)		Median PFS	Median OS
					Primary	Interval	Sensitive	Resistant		
Pelvic serous carcinoma	75	65.28 (40–86)	3	3	22	53	56	17	10	31
Serous adenocarcinoma	58	65.60 (42–86)	3	3	20	38	43	14	10	32
Primary peritoneal adenocarcinoma	17	64.47 (40–74)	3	3	2	15	13	3	10	34
Endometrioid adenocarcinoma	8	61.63 (45–84)	3	3	7	1	5	2	11	30.5
Mucinous adenocarcinoma	2	54 (48–60)	3	3	1	1	0	1	1	6.5
Clear cell carcinoma	4	49(40–62)	3	3	4	0	1	2	1	14
MMMT	6	72.50 (62–90)	3	3	5	1	0	3	1.5	5
Borderline epithelial tumour	8	56 (36–69)	–	–	8	0	–	–	–	–
Benign tumour	5	55.2 (48–68)	–	–	–	–	–	–	–	–
Normal ovary	5	67.58 (54–84)	–	–	–	–	–	–	–	–

significant difference between EOC and borderline tumours compared to benign and normal samples (Table 3). Patients with HGSOE tumours staining positive for EN2 had a significantly shorter median PFS than those with EN2 negative tumours (10 vs 17.5 months; $p = 0.0103$) (Fig. 4i). This difference is similar to that observed for *En2* mRNA expression. There was no significant difference in OS between the groups.

Confirmatory immunohistochemical staining of three ovarian cancer tissue arrays was performed to confirm the findings in our patient cohorts, and again demonstrated high levels of EN2 protein staining in EOC cores, particularly the serous histological sub-type (data not shown). As with our patient analysis, there was no EN2 staining in the epithelial or stromal components of normal ovary or normal adjacent ovary tissue.

Discussion

Despite significant advances in the medical management of solid tumours over the past decade, there has been little impact on the survival of advanced EOC. CA125 remains the only approved serum biomarker in ovarian cancer, however its routine use is restricted to monitoring ovarian cancer progression and treatment response. Other mucin-related glycoproteins such as MUC1 (CA15–3), HE4 and mesothelin have been extensively studied, alone or in combination with CA125, but still lack the desired high sensitivity and specificity necessary for a gold-standard clinical biomarker [26–29].

Many developmental homeodomain-containing transcription factors are aberrantly expressed in cancer and have been shown to promote cancer development, progression, recurrence or development of drug resistance [30, 31]. *EN2* encodes a transcription factor that plays an important role in embryonic development, but appears to have limited function in the normal adult nervous system [32, 33]. *EN2* over-expression has been identified

in a number of adult human cancers, namely breast, prostate, and bladder, and appears to have a functional role in tumour development. In EOC, the homeobox transcription factors HOXA13, B6, C13, D1 and D13 may be useful as prognostic biomarkers in EOC [9], and PAX8 is regularly used as a contributory diagnostic biomarker in EOC [11–13]. Preliminary work on cell lines and tissue arrays suggested that *EN2* may be present in ovarian cancer [34]. To test its role as a diagnostic or prognostic biomarker, *En2* RNA and protein expression in EOC cell lines and tumour tissue was characterised and its relationship with clinico-pathological parameters was assessed.

We demonstrated *En2* mRNA and EN2 protein over-expression in a number of EOC representative cell lines, and observed significantly higher *En2* mRNA expression in platinum-resistant compared with paired platinum-sensitive cells. However this was not seen in other examples of serous and endometrioid platinum-resistant cell lines. Some of these discrepancies may be as a result of inaccurate histological sub-type labelling. In a recent publication it was reported that the well-used SKOV3 cell line, previously thought to represent a high grade serous ovarian cancer, is actually more in keeping with an endometrioid pathology on molecular analysis [35].

EN2 protein was detectable via immunohistochemistry in all of the cell lines to a varying degree but when quantified its expression was found to be higher in platinum-sensitive compared to platinum-resistant paired cell lines. Although cell line work can be very informative and guide on-going work, it is not always fully representative of what occurs in the human tumour in vivo, especially if derived from ascitic fluid or metastatic tumour deposits rather than the primary tumour. Similar work on human tumour samples was vital to draw more comprehensive conclusions regarding EN2 expression in EOC.

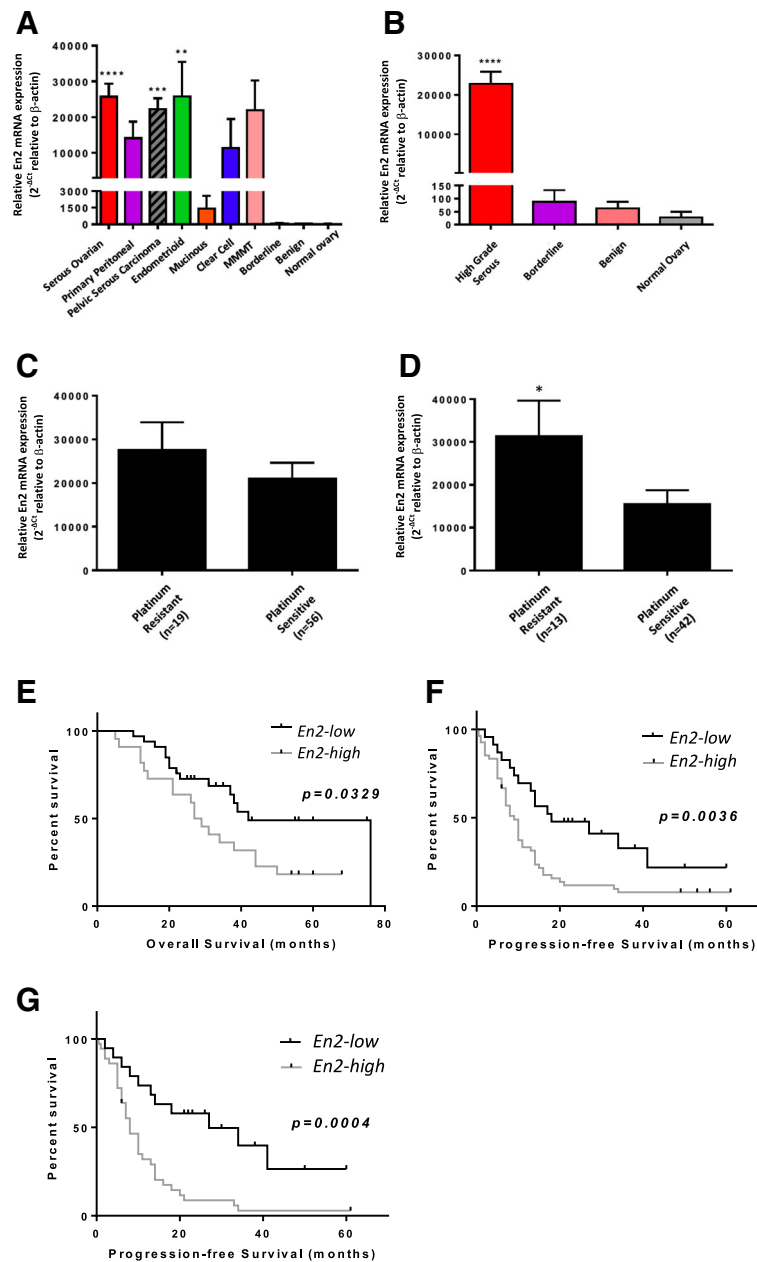


Fig. 3 *En2* mRNA expression is elevated in high-grade serous tumours, with higher expression conveying poor prognosis. Malignant, borderline, benign and normal tumours were analysed, with mean *En2* mRNA expression for each histological sub-type (a), or high grade serous tumours (HGSOCs) and non-malignant specimens (b), shown. Follow-up data was studied to determine if the patient had platinum-resistant (PFS < 6 months) or platinum-sensitive (PFS ≥ 6 months) disease. *En2* mRNA expression is shown for all HGSOCs (c), and interval surgery HGSOCs versus platinum status (d) ($p = 0.0232$). Survival curves compare high versus low *En2* expression for (e) overall survival in interval surgery HGSOCs (median OS = 28 vs. 42 months; $p = 0.0329$), (f) progression-free survival in all HGSOc specimens (median PFS = 9 vs. 18 months; $p = 0.0036$), and (g) progression-free survival in interval surgery HGSOcs (median PFS = 8 vs. 27 months; $p = 0.0004$). *En2* mRNA expression is shown relative to β -actin ($\times 100,000$), using the ΔC_T comparative method ($2^{-\Delta C_T}$). Error bars represent the SE; (* = $p < 0.05$; ** = $p < 0.01$; *** = $p < 0.001$; **** = $p < 0.0001$)

En2 mRNA expression in ovarian tissue could provide useful clinical information, although its use as a diagnostic marker of EOC would seem to be limited. EN2 protein levels in high-grade serous tumours was much higher than in normal ovarian specimens, and very low in non-

invasive borderline and benign serous ovarian tumours. It may also help to provide an early indication of whether the original tumour derives from the ovary or peritoneum, given that *En2* mRNA levels for the latter group were lower. At present, the primary source of the cancer is

Table 2 Summary data from the human ovarian tumours Cohort 2

Histology	N	Mean age (range)	Median Grade	Median Stage	Surgery (Number of patients)		Platinum Status (Number of patients)		Median PFS	Median OS
					Primary	Interval	Sensitive	Resistant		
Pelvic serous carcinoma	44	60.18 (25–81)	3	3	30	14	33	5	13.5	41
Endometrioid adenocarcinoma	12	63 (44–84)	2	1	12	0	10	0	97	105
Mucinous adenocarcinoma	6	64.67 (42–84)	3	3	6	0	1	2	1	9.5
Clear cell carcinoma	1	58	3	3	1	0	–	–	1	1
MMMT	3	71.67 (69–75)	3	3	2	1	–	2	1.5	5
Borderline epithelial tumour	17	54.18 (25–89)	–	–	17	0	–	–	–	–
Benign tumour	7	64.86 (46–80)	–	–	7	0	–	–	–	–

often not confirmed until primary or interval-debulking surgery has been completed. EN2 protein staining was also detected in the majority of EOC and borderline tumour specimens, and was negative in all normal ovary specimens, and in most benign tumours. However the intensity of staining did not reliably distinguish between the histological sub-type, grade, or stage of disease.

Our findings indicate that *En2* mRNA expression could act as a prognostic biomarker in interval debulking surgery in high-grade serous EOC tissue where an elevated level predicted a shorter PFS. Elevated *En2* mRNA levels also suggested a shorter OS, further supporting its possible use as a prognostic biomarker, although 40% of the OS data remained censored at the time of analysis. There

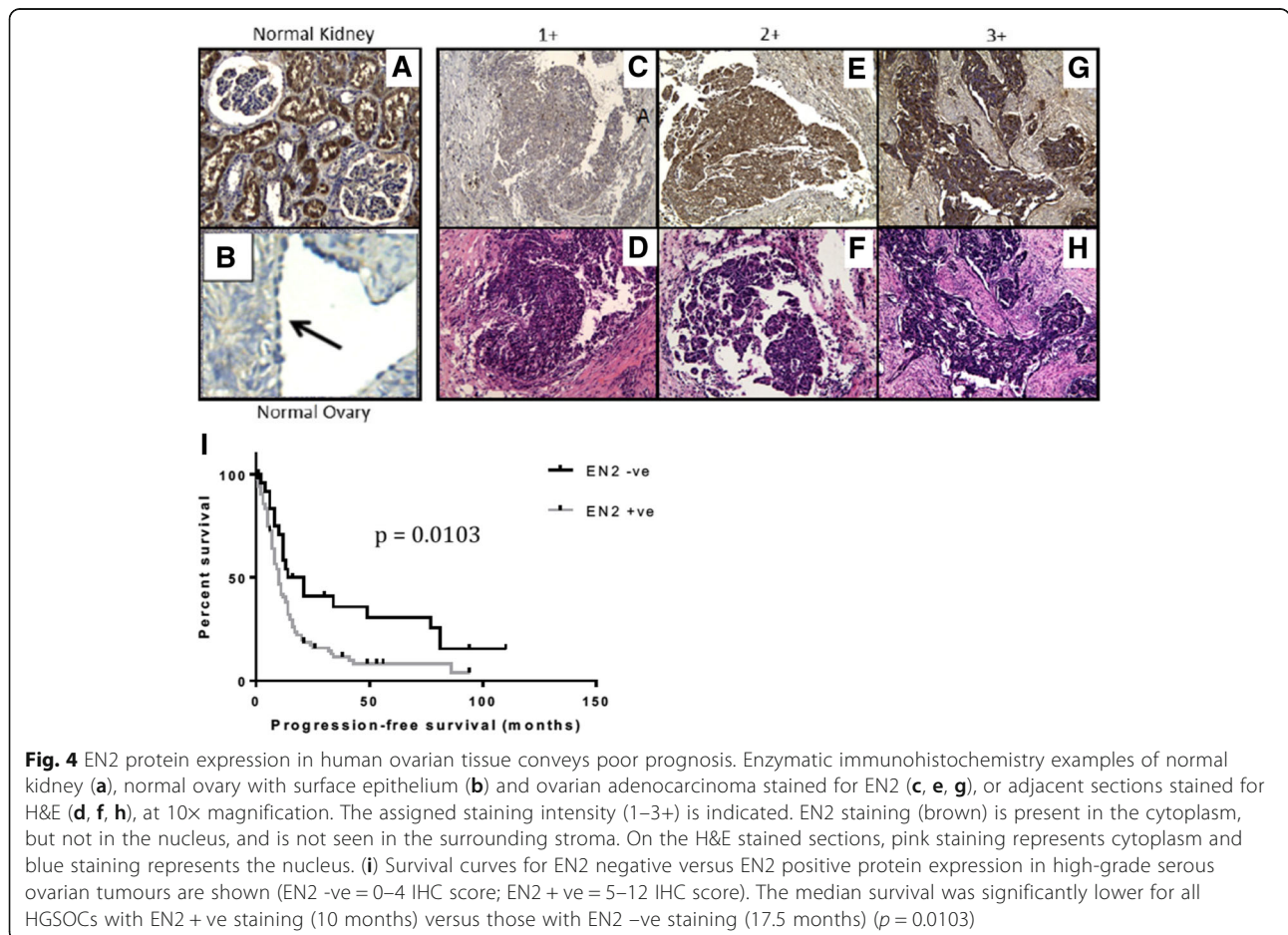


Table 3 EN2 protein expression in human ovarian tissue (Cohorts 1 and 2)

	N	EN2 -ve		EN2 +ve		χ^2	p
		(0-4)		(5-12)			
		n	%	n	%		
Normal	4	4	100%	0	0%	26.854	<0.001
Benign	12	9	75.0%	3	25.0%		
Borderline	24	8	33.3%	16	66.7%		
Epithelial ovarian carcinoma	151	33	21.9%	118	78.1%		
MMMT	7	3	42.9%	4	57.1%		
Histological sub-type							
Serous	120	25	20.8%	95	79.2%	2.468	NS
Mucinous	8	3	37.5%	5	62.5%		
Endometrioid	18	3	16.7%	15	83.3%		
Clear cell	5	2	40.0%	3	60.0%		
Tumour Grade (All Serous)							
1	1	0	0.0%	1	100.0%	1.111	NS
2	6	2	33.3%	4	66.7%		
3	111	20	18.0%	91	82.0%		
Tumour Stage (High Grade Serous)							
Early (I & II)	7	2	28.6%	5	71.4%	0.343	NS
Advanced (III & IV)	103	20	19.4%	83	80.6%		
III	74	11	14.9%	63	85.1%	3.481	NS
IV	29	9	31.0%	20	69.0%		
III (neoadjuvant only)	36	4	11.1%	32	88.9%	2.000	NS
IV (neoadjuvant only)	24	6	25.0%	18	75.0%		
Surgery (High Grade Serous)							
Primary	53	13	24.5%	40	75.5%	0.983	NS
Interval	59	10	16.9%	49	83.1%		
Platinum Sensitivity (High grade serous)							
Sensitive (≥ 6 months)	80	19	23.8%	61	76.3%	2.494	NS
Resistant (< 6 months)	23	2	8.7%	21	91.3%		
Platinum Sensitivity (High Grade Serous; Interval Surgery)							
Sensitive (≥ 6 months)	45	9	20.0%	36	80.0%	1.071	NS
Resistant (< 6 months)	13	1	7.7%	12	92.3%		

The product of the EN2 staining intensity score (0–3+) and the percentage of positively stained cells score (0–4) was calculated. The resultant score of 0–4 represented EN2 negative staining, and 5–12 represented EN2 positive staining. Comparative analysis of the tumour sections demonstrated a significant difference between the EOC and borderline tumours, compared with the benign and normal tissues ($\chi^2 = 26.854$, $p < 0.001$)

is growing data to suggest that a number of homeobox transcription factors may play a prognostic role in serous ovarian cancer [9, 10]. Therefore combining these HOX genes with EN2 expression, may also prove useful as a scoring system for prognostic risk stratification.

EN2 protein analysis of interval debulking surgery high-grade serous tumour specimens also demonstrated its possible utility as a prognostic biomarker. Patients with EN2-positive tumours had a shorter PFS, with durations in keeping with the mRNA data. However, there were no

significant differences in OS. Given that interval debulking surgery with pathological analysis is commonplace in the management of high-grade serous EOC, evaluation of *En2* mRNA or EN2 protein expression could help the oncologist to devise a more individualised post-operative treatment regimen. An elevated *En2* tumour mRNA level at interval debulking surgery in high-grade serous EOC patients was associated with early disease relapse, suggesting resistance to platinum chemotherapy. In combination with the surgeon's assessment of the amount of residual disease at debulking surgery, the level of *En2* mRNA could be used to assess treatment response, and guide the oncologist in deciding whether to prescribe additional cycles of post-operative chemotherapy, or to change the combination of drugs.

Increased *En2* mRNA and EN2 protein expression were identified in platinum-resistant EOC cell line models and human tissue samples compared with platinum-sensitive cases. In the case of the paired EOC cell lines, this suggested that increased *En2* expression may directly influence the disease progression or the development of platinum-resistance. We demonstrated that EN2 protein was located in the cytoplasm of EOC cell lines and tumour tissue, and not the nucleus, as seen in normal adult Purkinje neurones. This may suggest that it has a role in translational, rather than transcriptional regulation, possibly through a similar mechanism to that demonstrated in neurons of the developing nervous system [36]. In certain cell lines, it was visualised in association with the cell membrane, which may relate to cellular secretion or uptake.

An ideal early diagnostic biomarker would be a serological or urine-based biomarker which enables minimally invasive collection and low cost. Unfortunately, EN2 has proven difficult to isolate in blood (personal communication with Prof Richard Morgan), and although detectable in urine in known ovarian cancer sufferers, additional work is required to assess its utility.

Conclusion

This original research presents the Engrailed-2 transcription factor as a novel ovarian cancer biomarker. EN2 demonstrates prognostic value, particularly in interval debulking high-grade serous EOC tissue, correlating with worse overall and progression-free survival. Clearly, there is still an unmet need for robust diagnostic, as well as prognostic biomarkers in EOC. Therefore, it is hoped that further work will validate the use of EN2 as a such a biomarker, and provide further insight into the role of EN2 in the development, progression and spread of ovarian cancer.

Abbreviations

ΔC_T : Change in cycle threshold; ANOVA: Analysis of Variance; BSA: Bovine Serum Albumin; CA125: Carcinoembryonic Antigen 125; cDNA: Complementary Deoxyribonucleic Acid; CT: Cycle threshold; DAB: 3,3'-diaminobenzidine;

DNA: Deoxyribonucleic Acid; *En2*: Engrailed 2 gene; EN2: Engrailed 2 protein; EOC: Epithelial Ovarian Cancer; H&E: Haematoxylin and Eosin; HGSOC: High Grade Serous Ovarian Cancer; *HOX*: Homeobox gene; IHC: Immunohistochemistry; mRNA: Messenger Ribonucleic Acid; OS: Overall Survival; *PAX*: Paired gene; PBS: Phosphate Buffered Saline; PCR: Polymerase Chain Reaction; PFS: Progression-free Survival; REC: Research Ethics Committee; RNA: Ribonucleic Acid; RSCH: The Royal Surrey County Hospital; rt-PCR: Reverse Transcriptase Polymerase Chain Reaction

Funding

This research was carried out with support from the Oncology Research and Development Departments at the Royal Surrey County Hospital and the University of Surrey, as well as GRACE charity (who contributed to the lab bench fees).

Availability of data and materials

The datasets analysed during the current study are available from the corresponding author upon reasonable request.

Authors' contributions

SEM performed this research, including data collection and interpretation, as well as writing and submission of this manuscript. TKM, AT and SBM assisted in patient identification, consent and tissue acquisition. NA and RM assisted with individual experiments. AM and NA supervised the project, and AM, NA, HP and RM contributed to the final manuscript. All named authors have read the manuscript and have agreed to submit the paper to BMC in its present form. All those named as authors have made a sufficient contribution to the work. All authors read and approved the final manuscript.

Ethics approval and consent to participate

This study was approved by the London - Brighton & Sussex Research Ethics Committee (REC no: 09/H1103/50) and conducted between 2009 and 2014. Informed consent was taken from each patient prior to their planned surgery, with consent forms filed within their hospital patient record.

Consent for publication

Not applicable.

Competing interests

The authors declare that they have no competing interests.

Publisher's Note

Springer Nature remains neutral with regard to jurisdictional claims in published maps and institutional affiliations.

Author details

¹Oncology, School of Biosciences and Medicine, FHMS, University of Surrey, Leggett Building, Daphne Jackson Road, Guildford GU2 7WG, UK. ²Royal Surrey County Hospital, Egerton Road, Guildford GU2 7XX, UK. ³Present Address: The Royal Marsden NHS Foundation Trust, Downs Rd, Sutton, London SM2 5PT, UK. ⁴Present Address: The Institute of Cancer Therapeutics, University of Bradford, Bradford, West Yorkshire BD7 1DP, UK.

Received: 18 May 2018 Accepted: 13 September 2018

Published online: 03 October 2018

References

1. Einhorn N, Sjøvall K, Knapp RC, Hall P, Scully RE, Bast RC Jr, Zurawski VR Jr. Prospective evaluation of serum CA 125 levels for early detection of ovarian cancer. *Obstet Gynecol.* 1992;80:14–8.
2. Helzlsouer KJ, Bush TL, Alberg AJ, Bass KM, Zacur H, Comstock GW. Prospective study of serum CA-125 levels as markers of ovarian cancer. *JAMA.* 1993;269:1123–6.
3. Woolas RP, Xu FJ, Jacobs IJ, Yu YH, Daly L, Berchuck A, Soper JT, Clarke-Pearson DL, Oram DH, Bast RC Jr. Elevation of multiple serum markers in patients with stage I ovarian cancer. *J Natl Cancer Inst.* 1993;85:1748–1751.
4. Diaz-Padilla I, Razak AR, Minig L, Bernardini MQ, Maria Del Campo J. Prognostic and predictive value of CA-125 in the primary treatment of epithelial ovarian cancer: potentials and pitfalls. *Clinical and Translational Oncology.* 2012;14:15–20.

5. Lee M, Chang MY, Yoo H, Lee KE, Chay DB, Cho H, Kim S, Kim Y, Kim YT, Kim JH. Clinical significance of CA125 level after the first cycle of chemotherapy on survival of patients with advanced ovarian Cancer. *Yonsei Med J*. 2016;57:580–7.
6. Ozols RF. Systemic therapy for ovarian cancer: current status and new treatments. *Semin Oncol*. 2006;33:53–11.
7. Bast RC, Jr, Hennessey B, Mills GB. The biology of ovarian cancer: new opportunities for translation. *Nat Rev Cancer* 2009; 9:415–428.
8. Kelly ZL, Michael A, Butler-Manuel S, Pandha HS, Morgan RG. HOX genes in ovarian cancer. *Journal of ovarian research*. 2011;4:16–21.
9. Kelly Z, Moller-Levet C, McGrath S, Butler-Manuel S, Madhuri KT, Kierzek AM, Pandha H, Morgan R, Michael A. The prognostic significance of specific HOX gene expression patterns in ovarian cancer. *Int J Cancer*. 2016;139:1608–17.
10. Miller KR, Patel JN, Zhang Q, Norris EJ, Symanowski J, Michener C, Sehoulji J, Braicu I, Destephanis DD, Sutker AP, Jones W, Livasy CA, Biscotti C, Ganapathi RN, Tait DL, Ganapathi MK. HOXA4/HOXB3 gene expression signature as a biomarker of recurrence in patients with high-grade serous ovarian cancer following primary cytoreductive surgery and first-line adjuvant chemotherapy. *Gynecol Oncol*. 2018;149:155–62.
11. Nonaka D, Chiriboga L, Soslow RA. Expression of pax8 as a useful marker in distinguishing ovarian carcinomas from mammary carcinomas. *Am J Surg Pathol*. 2008;32:1566–71.
12. Laury AR, Hornick JL, Perets R, Krane JF, Corson J, Drapkin R, Hirsch MS. PAX8 reliably distinguishes ovarian serous tumors from malignant mesothelioma. *Am J Surg Pathol*. 2010;34:627–35.
13. Laury AR, Perets R, Piao H, Krane JF, Barletta JA, French C, Chiriac LR, Lis R, Loda M, Hornick JL, Drapkin R, Hirsch MS. A comprehensive analysis of PAX8 expression in human epithelial tumors. *Am J Surg Pathol*. 2011;35:816–26.
14. Martin NL, Saba-El-Leil MK, Sadekova S, Meloche S, Sauvageau G. EN2 is a candidate oncogene in human breast cancer. *Oncogene*. 2005;24:6890–901.
15. Morgan R, Boxall A, Bhatt A, Bailey M, Hindley R, Langley S, Whitaker HC, Neal DE, Ismail M, Whitaker H, Annels N, Michael A, Pandha H. Engrailed-2 (EN2): a tumor specific urinary biomarker for the early diagnosis of prostate cancer. *Clin Cancer Res*. 2011;17:1090–8.
16. Pandha H, Sorensen KD, Orntoft TF, Langley S, Hoyer S, Borre M, Morgan R. Urinary engrailed-2 (EN2) levels predict tumour volume in men undergoing radical prostatectomy for prostate cancer. *BJU Int*. 2012;110:E287–92.
17. Pandha HJ, Sooriakumaran P, Bott S, Montgomery B, Hutton A, Eden C, Langley S, Morgan R. Correlation of urinary Engrailed-2 levels to tumour volume and pathological stage in men undergoing radical prostatectomy. *Journal of Cancer Therapy*. 2013;4:726–33.
18. Morgan R, Bryan RT, Javed S, Launchbury F, Zeegers MP, Cheng KK, James ND, Wallace DM, Hurst CD, Ward DG, Knowles MA, Pandha H. Expression of Engrailed-2 (EN2) protein in bladder cancer and its potential utility as a urinary diagnostic biomarker. *Eur J Cancer*. 2013;49:2214–22.
19. d'Adhemar CJ, Spillane CD, Gallagher MF, Bates M, Costello KM, Barry-O'Crowley J, Haley K, Kernan N, Murphy C, Smyth PC, O'Byrne K, Pennington S, Cooke AA, French B, Martin CM, O'Donnell D, Hennessey B, Stordal B, Finn S, McCann A, Gleeson N, D'Arcy T, Flood B, O'Neill LA, Sheils O, O'Toole S, O'Leary JJ. The MyD88+ phenotype is an adverse prognostic factor in epithelial ovarian cancer. *PLoS One*. 2014;9:e100816.
20. Boerboom D, Paquet M, Hsieh M, Liu J, Jamin SP, Behringer RR, Sirois J, Taketo MM, Richards JS. Misregulated Wnt/beta-catenin signaling leads to ovarian granulosa cell tumor development. *Cancer Res*. 2005;65:9206–15.
21. DiFeo A, Narla G, Hirshfeld J, Camacho-Vanegas O, Narla J, Rose SL, Kalir T, Yao S, Levine A, Birrer MJ, Bonome T, Friedman SL, Buller RE, Martignetti JA. Roles of KLF6 and KLF6-SV1 in ovarian cancer progression and intraperitoneal dissemination. *Clin Cancer Res*. 2006;12:3730–9.
22. Morgan R, Plowright L, Harrington KJ, Michael A, Pandha HS. Targeting HOX and PBX transcription factors in ovarian cancer. *BMC Cancer*. 2010;10:89.
23. Chen J, Wei D, Zhao Y, Liu X, Zhang J. Overexpression of EFEMP1 correlates with tumor progression and poor prognosis in human ovarian carcinoma. *PLoS One*. 2013;8:e78783.
24. Nik NN, Vang R, Shih le M, Kurman RJ. Origin and pathogenesis of pelvic (ovarian, tubal, and primary peritoneal) serous carcinoma. *Annu Rev Pathol*. 2014;9:27–45.
25. Blackledge G, Lawton F, Redman C, Kelly K. Response of patients in phase II studies of chemotherapy in ovarian cancer: implications for patient treatment and the design of phase II trials. *Br J Cancer*. 1989;59:650–3.
26. McIntosh MW, Drescher C, Karlan B, Scholler N, Urban N, Hellstrom KE, Hellstrom I. Combining CA 125 and SMR serum markers for diagnosis and early detection of ovarian carcinoma. *Gynecol Oncol*. 2004;95:9–15.
27. Drapkin R, von Horsten HH, Lin Y, Mok SC, Crum CP, Welch WR, Hecht JL. Human epididymis protein 4 (HE4) is a secreted glycoprotein that is overexpressed by serous and endometrioid ovarian carcinomas. *Cancer Res*. 2005;65:2162–9.
28. Badgwell D, Lu Z, Cole L, Fritsche H, Atkinson EN, Somers E, Allard J, Moore RG, Lu KH, Bast RC Jr. Urinary mesothelin provides greater sensitivity for early stage ovarian cancer than serum mesothelin, urinary hCG free beta subunit and urinary hCG beta core fragment. *Gynecol Oncol* 2007;106:490–497.
29. Moore RG, McMeekin DS, Brown AK, DiSilvestro P, Miller MC, Allard WJ, Gajewski W, Kurman R, Bast RC Jr, Skates SJ. A novel multiple marker bioassay utilizing HE4 and CA125 for the prediction of ovarian cancer in patients with a pelvic mass. *Gynecol Oncol*. 2009;112:40–6.
30. Shah N, Sukumar S. The Hox genes and their roles in oncogenesis. *Nat Rev Cancer*. 2010;10:361–71.
31. Beltran AS, Rivenbark AG, Richardson BT, Yuan X, Quian H, Hunt JP, Zimmerman E, Graves LM, Blancafort P. Generation of tumor-initiating cells by exogenous delivery of OCT4 transcription factor. *Breast Cancer Res*. 2011;13:R94.
32. Morgan R. Engrailed: complexity and economy of a multi-functional transcription factor. *FEBS Lett*. 2006;580:2531–3.
33. Sillitoe RV, Stephen D, Lao Z, Joyner AL. Engrailed homeobox genes determine the organization of Purkinje cell sagittal stripe gene expression in the adult cerebellum. *J Neurosci*. 2008;28:12150–62.
34. Michael A, Riley C, Boakee S, Denyer M, Pandha HS, Annels NE. EN2: a candidate antigen for the development of targeted therapies in ovarian cancer. *J Clin Oncol* 2011;29(suppl); abstr e15528).
35. Domcke S, Sinha R, Levine DA, Sander C, Schultz N. Evaluating cell lines as tumour models by comparison of genomic profiles. *Nat Commun*. 2013;4:2126.
36. Brunet I, Weinel C, Piper M, Trembleau A, Volovitch M, Harris W, Prochiantz A, Holt C. The transcription factor Engrailed-2 guides retinal axons. *Nature*. 2005;438:94–8.

Ready to submit your research? Choose BMC and benefit from:

- fast, convenient online submission
- thorough peer review by experienced researchers in your field
- rapid publication on acceptance
- support for research data, including large and complex data types
- gold Open Access which fosters wider collaboration and increased citations
- maximum visibility for your research: over 100M website views per year

At BMC, research is always in progress.

Learn more [biomedcentral.com/submissions](https://www.biomedcentral.com/submissions)

