



UWL REPOSITORY

repository.uwl.ac.uk

Vertebroplasty and kyphoplasty can restore normal spine mechanics following osteoporotic vertebral fracture

Luo, Jin ORCID logoORCID: <https://orcid.org/0000-0001-5451-9535>, Adams, MA and Dolan, P (2010) Vertebroplasty and kyphoplasty can restore normal spine mechanics following osteoporotic vertebral fracture. *Journal of osteoporosis*. ISSN 2090-8059

<http://dx.doi.org/10.4061/2010/729257>

This is the Published Version of the final output.

UWL repository link: <https://repository.uwl.ac.uk/id/eprint/6912/>

Alternative formats: If you require this document in an alternative format, please contact: open.research@uwl.ac.uk

Copyright: Creative Commons: Attribution 4.0

Copyright and moral rights for the publications made accessible in the public portal are retained by the authors and/or other copyright owners and it is a condition of accessing publications that users recognise and abide by the legal requirements associated with these rights.

Take down policy: If you believe that this document breaches copyright, please contact us at open.research@uwl.ac.uk providing details, and we will remove access to the work immediately and investigate your claim.

Rights Retention Statement:

Review Article

Vertebroplasty and Kyphoplasty Can Restore Normal Spine Mechanics following Osteoporotic Vertebral Fracture

Jin Luo, Michael A. Adams, and Patricia Dolan

Department of Anatomy, University of Bristol, Southwell Street, Bristol BS2 8EJ, UK

Correspondence should be addressed to Patricia Dolan, trish.dolan@bris.ac.uk

Received 15 January 2010; Accepted 6 May 2010

Academic Editor: Joao Lindolfo Borges

Copyright © 2010 Jin Luo et al. This is an open access article distributed under the Creative Commons Attribution License, which permits unrestricted use, distribution, and reproduction in any medium, provided the original work is properly cited.

Osteoporotic vertebral fractures often lead to pain and disability. They can be successfully treated, and possibly prevented, by injecting cement into the vertebral body, a procedure known as vertebroplasty. Kyphoplasty is similar, except that an inflatable balloon is used to restore vertebral body height before cement is injected. These techniques are growing rapidly in popularity, and a great deal of recent research, reviewed in this paper, has examined their ability to restore normal mechanical function to fractured vertebrae. Fracture reduces the height and stiffness of a vertebral body, causing the spine to assume a kyphotic deformity, and transferring load bearing to the neural arch. Vertebroplasty and kyphoplasty are equally able to restore vertebral stiffness, and restore load sharing towards normal values, although kyphoplasty is better at restoring vertebral body height. Future research should optimise these techniques to individual patients in order to maximise their beneficial effects, while minimising the problems of cement leakage and adjacent level fracture.

1. Introduction

Vertebral fracture is the most common type of osteoporotic fracture and imposes a significant burden on society. In the year 2000, an estimated 1.4 million osteoporotic vertebral fractures were recorded in the world [1]. Such fractures can cause disabling pain and kyphotic deformity [2] leading to impaired physical function and reduced quality of life [3, 4]. For a significant number of patients the pain becomes chronic, even after several months of conservative treatment such as bed rest and analgesics. In recent years, a novel treatment named “vertebroplasty” has been used increasingly to treat painful osteoporotic vertebral fracture [5, 6]. It is a minimally invasive technique that involves injection of bone cement into the fractured vertebral body to stabilize the fracture and alleviate pain. A modification of the technique, called “kyphoplasty”, involves inflating a balloon inside the fractured vertebral body in order to reduce the fracture and create a cavity for the subsequent injection of cement [7]. Kyphoplasty may reduce the incidence of cement leakage during injection [8, 9], and may also help to restore vertebral body height [10–15]. Numerous clinical

studies have demonstrated that vertebroplasty is effective in relieving pain following vertebral fracture [16–19]. Furthermore, a recent systematic review of vertebral augmentation for treating vertebral compression fractures suggests that physical disability, general health, and pain relief show greater early improvements in patients treated with vertebroplasty or kyphoplasty compared to those undergoing medical management [20]. However, two recent randomized controlled clinical trials found that the pain relief effect of vertebroplasty is no better than local anaesthetic [21, 22]. These controversies suggest that the mechanical and clinical effectiveness of vertebroplasty needs further investigation [23].

In this paper, we will concentrate on the mechanical effects of vertebroplasty and kyphoplasty and how they might improve clinical outcome. Although the primary purpose of these procedures is to mechanically augment the fractured vertebral body in order to alleviate pain, the discussion of their mechanical effects should not be limited to their effects on this structure alone. As will be discussed later in this paper, osteoporotic fracture not only damages the fractured vertebral body, but also causes profound changes to the

mechanics of the whole spine. It is therefore necessary to take a wider perspective of the mechanical effects of vertebral augmentation.

This paper will present evidence from current studies to answer the following three questions: (1) What are the effects of osteoporotic vertebral fracture on spine mechanics? (2) To what extent can vertebroplasty and kyphoplasty restore these fracture-induced effects on spine mechanics? (3) What are the important modifiable factors that can influence the restoration effects of vertebral augmentation?

2. Osteoporotic Vertebral Fracture Disrupts Spine Mechanics

The main function of the human spine is to resist compressive load in order to maintain the upright posture, allow flexibility for body movements, and protect the spinal cord which lies within the bony vertebral canal [24]. Two main structures of the spine, that is, the vertebrae and intervertebral discs, help to accomplish these functions. The vertebral body has a high stiffness which enables it to resist axial loading, and the intervertebral discs allow for mobility while distributing compressive load to the adjacent vertebral bodies. In a young and uninjured spine more than 80% of the compressive load is transferred through the anterior column (vertebral bodies and discs), and the discs, which act like a water bed, distribute the resulting compressive stress evenly across the vertebral bodies in both flexed and erect postures [25].

As the spine ages, osteoporosis and disc degeneration can alter the load bearing properties of the spine. Osteoporosis leads to a loss of stiffness in the bone, and as a result vertebral bodies become more deformable and may show greater deformations than the discs under compressive loading [26]. Disc degeneration leads to a loss of fluid and of disc height. As a result, nucleus pressure falls and the disc loses its ability to distribute compressive stresses evenly on the adjacent vertebral bodies [27]. In flexed postures, stress concentrations develop in the anterior annulus whereas in erect postures, stress becomes concentrated in the posterior annulus and neural arch [27, 28]. These changes in spinal load sharing can lead to stress shielding of the anterior vertebral body in upright postures increasing the risk of osteoporotic vertebral fracture, which can lead to even more profound changes in the spine's mechanical function.

Osteoporotic vertebral fracture usually involves damage to the endplate, as well as to the trabecular and cortical bone [29]: this leads to a loss of stiffness and strength in the fractured vertebra. Damage is usually located in the anterior part of the vertebral body because this part has lower bone mineral density in elderly spines (Figure 1), and so is easily damaged during spinal flexion when load is concentrated on the anterior part of the disc and vertebral body [27, 29]. This reduces vertebral height anteriorly, leading to wedge shape vertebral deformity [29]. The time-dependent mechanical properties of the fractured vertebra also deteriorate. A recent study on cadaver motion segments found that creep deformation of damaged vertebra was

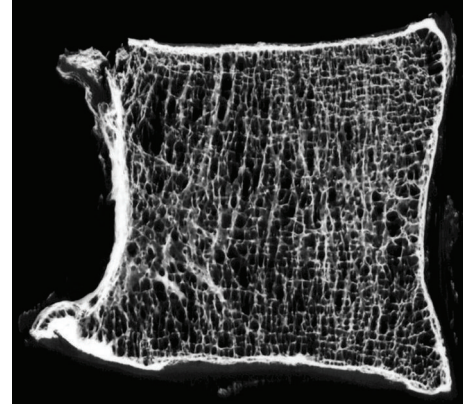


FIGURE 1: Microradiograph of a mid-sagittal-plane slice of an L2 vertebral body (male, aged 81 years), anterior on the left. Note the inferior trabecular architecture in the anterior region. (Reproduced with permission from Adams et al. [27]).

markedly increased following fracture [30], suggesting that the damaged vertebral body may continue to lose height even if no further damage is sustained [30], leading to even more pronounced wedge deformity [31, 32].

Vertebral fracture also causes mechanical changes to the surrounding structures. The damaged endplate and trabecular bone deform excessively under compressive load [33] allowing more space for the nucleus of the adjacent disc which is effectively a pressurised fluid [34]. This will induce a loss of intradiscal pressure [29]. A decompressed disc bulges radially and loses height, like a flat tyre [35] producing slack in the intervertebral ligaments, and reducing bending and compressive stiffness [36]. The decrease in nucleus pressure causes more compressive load to be resisted by the annulus. This increases concentrations of stress in the annulus, particularly the posterior annulus [37]. The compressive load resisted by the anterior vertebral body is correspondingly reduced [29, 38]. On the other hand, compressive load bearing by the neural arch is increased significantly because disc height loss brings adjacent vertebrae closer together, increasing contact stresses in the zygapophyseal joints, particularly in erect or extended postures [39].

These mechanical changes to adjacent structures following vertebral fracture may have serious consequences. The outer posterior annulus and zygapophyseal joints are innervated, so high stresses in these structures could contribute to the pain associated with osteoporotic vertebral fracture [40, 41]. In the long term, the transfer of compressive load from the anterior vertebral body to the neural arch will stress-protect the entire anterior column, reducing bone density in this region [28]. This could contribute to the risk of adjacent level fracture [27]. The altered disc mechanics such as loss of nuclear pressure and increased stress peaks in the annulus may also initiate or exacerbate disc degeneration [34].

Osteoporotic vertebral fracture also influences the mechanics of the whole spine. Increased vertebral wedging at the fractured level would act to increase flexion deformity so that greater extensor moments are required to counter gravitational forces on the trunk and maintain the upright

posture. As a result, the compressive forces acting down the spine will increase during standing [42, 43]. This increase in spinal loading may induce anterior wedging at adjacent and other levels with low anterior BMD leading to progressive spinal deformity and loss of sagittal balance [44, 45]. This effect may be exacerbated with time by the marked increase in creep deformation of damaged vertebra [30] which can result in a progressive increase in kyphosis [32].

The influence of osteoporotic vertebral fracture is two dimensional: it disrupts the mechanics of the whole spine in space, and this disruption is progressive over time. This poses a serious challenge for its treatment. In the following section, we will present evidence showing how vertebroplasty has the ability to restore spine mechanics in both of these dimensions.

3. Vertebroplasty Can Restore Normal Mechanics to an Injured Spine

3.1. Stiffness and Strength. Vertebroplasty increases the stiffness and strength of a fractured vertebral body towards prefracture levels [46, 47]. The compressive and bending stiffness of whole spinal “motion segments” (two vertebrae and the intervening disc and ligaments) is also partially restored by vertebroplasty [29]. These effects depend on the type and volume of injected cement, as discussed below.

3.2. Height and Wedge Angle. By increasing stiffness, vertebroplasty can effectively increase the height [48–50], and decrease slightly the wedge angle [49], of unloaded fractured vertebrae. Some *in vitro* biomechanical experiments have reported that, if enough cement is injected, then kyphosis angle can be restored to prefracture levels [51]. However, most experimental and clinical studies show that vertebroplasty does not entirely restore height and wedge angle [29, 49, 50, 52–55]. This may reflect the recent tendency to use small cement volumes in order to minimise the risk of leakage, resulting in an insufficient volume of cement being injected. Such a suggestion is supported by the findings of a cadaveric study which found that the restoration of local kyphosis angle was significantly correlated with cement volume [51].

Changes in vertebral body shape may be maintained during subsequent loading, although the evidence is equivocal. Augmented vertebral bodies have been reported to show improved fatigue properties compared with nonaugmented controls [56], and several *in vitro* studies have found no loss of restored vertebral height following cyclic loading [51, 57]. Clinical studies found that kyphosis was decreased immediately [54] and 6 months after vertebroplasty [58]. However, more recent clinical studies have noted that augmented vertebral bodies often lose height or recollapse during the follow-up period [59, 60], and in most cases, these changes were not due to trauma [60]. This raises serious concerns about the ability of vertebroplasty to fully and permanently restore height and shape to fractured vertebrae.

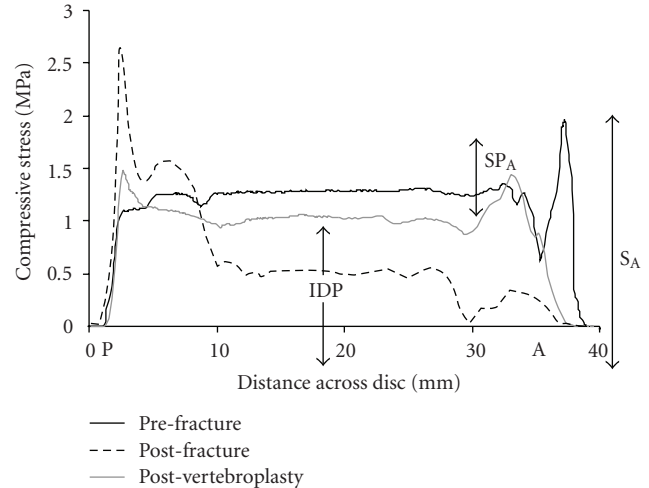


FIGURE 2: “Stress profiles” show the distribution of compressive stress within the intervertebral disc of a cadaver motion segment (Male 74, L1-2, A: anterior, P: posterior). In the nucleus of the disc, there is a hydrostatic pressure, the intradiscal pressure (IDP). Before fracture, stress is distributed evenly across the disc except for a small stress peak in the anterior annulus (SP_A). After fracture, IDP falls markedly and a large stress peak appears in the posterior annulus. Vertebroplasty restores IDP towards pre-fracture levels and also reduces the height of the stress peak in the posterior annulus. (Reproduced with permission from Luo et al. [29]).

3.3. Load-Sharing and Adjacent-Level Fracture. By augmenting the fractured vertebra, vertebroplasty can help restore normal mechanics to surrounding structures. Endplate deformation of fractured vertebrae under compressive load is reduced after vertebroplasty [61], restoring nucleus pressure in adjacent intervertebral discs, and reducing stress concentrations in the posterior annulus [29, 38]. Compressive load bearing by the anterior half of augmented and adjacent vertebral bodies is also increased, and neural arch load bearing correspondingly decreased [29, 38]. Fracture-induced changes are largely but not entirely reversed (Figure 2). By restoring normal load sharing, vertebroplasty has the potential to decrease the risk of recurrent and adjacent level fractures to an osteoporotic spine.

Despite these findings, there is persisting concern that vertebroplasty can increase the risk of fracture to adjacent vertebrae [62–64] by increasing the compressive stress acting on them [65–68]. Finite element studies suggest that vertebroplasty can increase endplate deformation in adjacent vertebrae by decreasing endplate bulging of the augmented vertebra and thereby increasing intradiscal pressure [65]. However, this is not supported by experimental studies which found that endplate deformation [69] and load transfer [70] do not increase following vertebroplasty.

4. Factors Influencing the Mechanical Efficacy of Vertebroplasty

The mechanical effects of vertebroplasty depend on the characteristics of the procedure (such as cement type,

volume, and distribution) and also on the characteristics of the augmented spine (including BMD, disc degeneration, and damage severity).

4.1. Properties of Bone Cement. Polymethylmethacrylate (PMMA) is currently the most widely used bone cement for vertebroplasty. However, it has several disadvantages, such as temperature rises during polymerization that can cause tissue damage [71], and lack of bioactivity [72]. Accordingly, new types of cement such as bioactive composite materials like Cortoss and calcium phosphate cement (CPC) have been developed. Although different cements have varying elastic modulus and compressive strength [47, 73], they are all able to increase stiffness and strength of fractured vertebrae. However, this ability depends on the volume injected [47].

A finite element study has suggested that stiffer cement can increase stress on the endplates immediately above and below it, leading to increased pressure in adjacent discs, and consequently greater stress on the endplate of adjacent vertebrae [74]. However, this was not confirmed in an experimental study on cadaver motion segments that compared Cortoss and PMMA [29]. Although Cortoss has an elastic modulus twice as high as PMMA [73], no differences were found between the two cements regarding the restoration of intradiscal pressure, spinal load sharing, and compressive and bending stiffness. This could be due to the fact that smaller volumes of Cortoss were used, and it suggests that the mechanical effects of vertebroplasty depend as much on cement volume and distribution as on cement modulus [74].

Less stiff bone cements, such as CPC, appear to have inferior fatigue properties as indicated by the appearance of small cracks after cyclic loading [56]. This could explain why clinical studies report that CPC-injected vertebral bodies are vulnerable to progressive collapse for 2 or more years after vertebroplasty [75]. Recently, efforts have been made to reduce the stiffness of PMMA cement for vertebral augmentation [76, 77] but the ability of softer cements to reduce the risk of adjacent-level fracture has yet to be demonstrated [78].

4.2. Volume and Distribution of Cement. Experiments on isolated cadaver vertebral bodies show that different volumes of cement are required to restore vertebral strength and stiffness. Strength can be restored to prefracture levels by using as little as 2 ml of PMMA cement [48], but full restoration of vertebral body stiffness requires injection volumes of approximately 4 ml in thoracic vertebrae and 6 to 8 ml in thoracolumbar vertebrae [48, 79, 80]. Restoration of strength and stiffness depends also on percentage volumetric fill [46, 81–83]: 16% [82] to 24% [83] percentage cement fill can fully restore vertebral strength to pre-fracture levels, but 24% [83] to 30% [82] fill is required to restore vertebral stiffness.

The restoration of mechanics to adjacent structures is also influenced by cement volume. One experiment on cadaver motion segments found that only a small amount

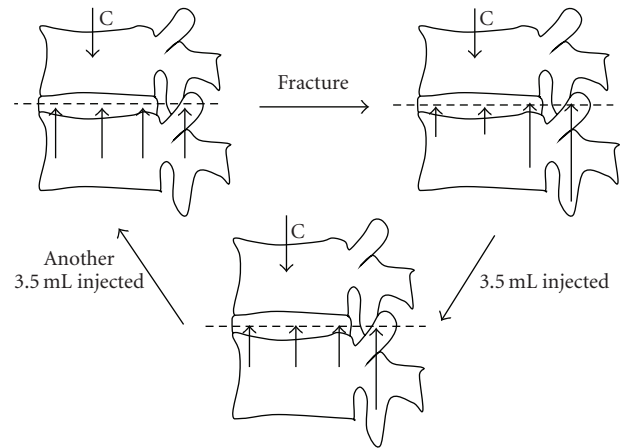


FIGURE 3: Diagram summarising the changes in load bearing by vertebrae following fracture and vertebroplasty. The length of the upward pointing arrows represents load bearing by different regions of the vertebra. Before fracture (A), the compressive load is borne mostly by the anterior column (disc and vertebral bodies) and stress is distributed evenly across the disc and adjacent vertebral bodies. After fracture (B), stress falls in central and anterior regions of the disc and increases in the posterior annulus and neural arch. Injecting 3.5 ml of cement into the fractured vertebral body (C) causes stress to be distributed more evenly across the disc, but loading on the neural arch remains elevated. Injecting a further 3.5 ml of cement restores neural arch load bearing towards pre-fracture levels (A). Based on data from Luo et al. [84].

(3.5 ml) of PMMA is needed to restore normal stress distribution to the fractured and adjacent vertebral bodies, but more cement (7 ml) is required to restore motion segment stiffness and load sharing between the vertebral bodies and neural arches [84], as shown in Figure 3. Restoration of vertebral body shape and kyphosis angle also increases with the cement volume injected [51]. These experimental findings appear to suggest that more cement is beneficial in restoring the spine's mechanical properties. However, a large cement volume may not be advisable clinically, because it increases the risk of cement leakage [85]. Overfilling of the fractured vertebra may also increase the risk of adjacent vertebral fracture [62, 65, 66].

This dilemma may be overcome by using larger volumes of more compliant cement, as discussed above. However, there is still a higher risk of cement leakage associated with greater cement volumes. Another solution is to place the bone cement in a more efficient way so that less cement is needed to achieve a better mechanical outcome. For example, placing the cement adjacent to the endplates so that a complete endplate-to-endplate fill pattern is achieved could maximise the increase in compressive stiffness and strength to a fractured vertebral body [74, 86]. Unfortunately, it may also induce excessive endplate deformation in the adjacent vertebra and cause adjacent-level fracture [65, 74]. It is therefore reasonable to suggest that a moderate amount of cement placed adjacent to the endplates could restore spine mechanics and minimise the risk of adjacent-level fracture. This suggestion is supported by two recent experimental

studies: one showed that the increase in nucleus pressure and the decrease in neural arch load bearing were correlated with cement fill in the region adjacent to the endplate [87]; the other showed that if cement is not in close contact with the endplates then it does not increase endplate deformation in adjacent vertebrae [69].

The efficiency of cement placement within the vertebral body can be controlled by cement viscosity during injection. Optimal cement viscosity can result in more evenly distributed cement and can significantly decrease the risk of cement leakage [88, 89]. A more evenly distributed cement pattern results in greater increases in vertebral body stiffness and induces smaller stress concentrations around the cement, which may decrease the risk of adjacent-level fracture [90].

4.3. Kyphoplasty versus Vertebroplasty. Kyphoplasty is a modification of the basic vertebroplasty technique. It involves forcibly inflating a balloon inside the fractured vertebral body in order to reduce the fracture and create a cavity for the subsequent injection of cement [91]. This modification is thought to have several benefits: it allows cement to be injected at lower pressure so that leakage is reduced [8, 9, 92], and it leads to compaction of bone around the balloon, elevating the fractured endplate and restoring vertebral body height [10–13, 15, 91, 93–95], which may be beneficial for restoring spine mechanics to patients with osteoporotic fracture [42].

In vitro biomechanical studies have shown that kyphoplasty can achieve a better restoration of vertebral height [57, 96, 97] and wedge angle [50] in fractured vertebrae. However, the short-term mechanical effects of kyphoplasty are similar to those of vertebroplasty, with both procedures restoring motion segment stiffness [50, 98], intradiscal pressure [50, 99], and spinal load sharing [50] by a similar amount. A recent randomized clinical trial comparing kyphoplasty and vertebroplasty found that the two procedures produced similar pain-relieving effects, although kyphoplasty was superior in restoring vertebral height and shape [100]. Nevertheless, an *in vitro* study found that, whilst kyphoplasty achieved a better initial vertebral height restoration than vertebroplasty, the restored height was lost during subsequent cyclic loading [57]. This highlights the importance of following-up changes over time, both *in vivo* and *in vitro*.

4.4. Characteristics of the Treated Spine. Cadaver experiments have shown that vertebrae with lower BMD tend to sustain more severe fractures and lose more height [29]. These same specimens show greater changes in mechanical function following fracture [29] and, encouragingly, benefit most from vertebral augmentation [29, 101, 102]. Evidently, vertebroplasty is particularly effective for restoring spine mechanics in patients with osteoporosis.

5. Summary and Future Directions

Osteoporotic vertebral fracture can induce profound disruption to normal spine mechanics which can have both

short-term and long-term consequences. By augmenting the fractured vertebra, vertebroplasty largely restores normal mechanics to a fractured osteoporotic spine.

Further research is required to optimise vertebral augmentation procedures. Cadaveric experiments have been successful in identifying the mechanical consequences of fracture, for the affected and adjacent vertebrae, and demonstrating how they can be reversed. However, many variable and interacting factors can influence mechanical outcome, and clinical outcome will depend on even more variables, including the tissue origins of pain. It is becoming evident that mathematical modelling based on patient-specific anatomy and BMD will be required to provide optimal solutions for individual patients.

In addition, a wider view of vertebral deformity needs to be adopted. Approximately half of patients with osteoporotic vertebral fractures recall no traumatic onset [103], and many deformed vertebrae do not appear to be obviously fractured on radiographs. This suggests that vertebral deformity in many patients involves gradual processes such as “creep”, which is continuing deformation under constant load [30, 104]. Cadaveric studies have recently demonstrated that creep can cause anterior wedge deformities in old human vertebrae bones [104], and that creep is accelerated greatly following vertebral microdamage [30]. Vertebroplasty may prove as successful in modifying these time-dependent processes as in reversing the effects of fracture.

Finally, more research is required to explain why vertebral deformity is so variably associated with pain, and why pain relief following vertebroplasty is so unpredictable.

References

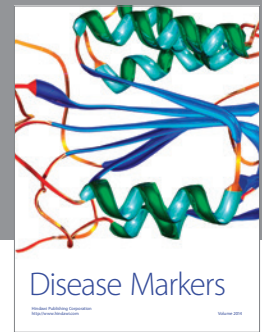
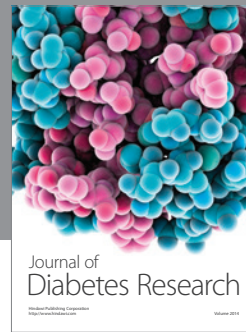
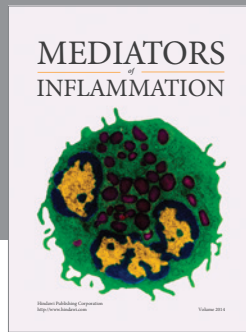
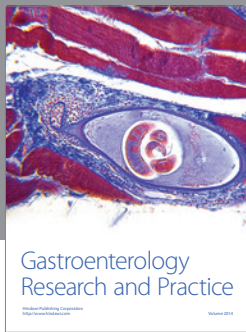
- [1] O. Johnell and J. A. Kanis, “An estimate of the worldwide prevalence and disability associated with osteoporotic fractures,” *Osteoporosis International*, vol. 17, no. 12, pp. 1726–1733, 2006.
- [2] S. L. Silverman, “The clinical consequences of vertebral compression fracture,” *Bone*, vol. 13, supplement 2, pp. S27–S31, 1992.
- [3] W. Cockerill, M. Lunt, A. J. Silman et al., “Health-related quality of life and radiographic vertebral fracture,” *Osteoporosis International*, vol. 15, no. 2, pp. 113–119, 2004.
- [4] J. Fechtenbaum, C. Cropet, S. Kolta, S. Horlait, P. Orcel, and C. Roux, “The severity of vertebral fractures and health-related quality of life in osteoporotic postmenopausal women,” *Osteoporosis International*, vol. 16, no. 12, pp. 2175–2179, 2005.
- [5] P. Galibert, H. Deramond, P. Rosat, and D. Le Gars, “Preliminary note on the treatment of vertebral angioma by percutaneous acrylic vertebroplasty,” *Neurochirurgie*, vol. 33, no. 2, pp. 166–168, 1987.
- [6] P. Galibert and H. Deramond, “Percutaneous acrylic vertebroplasty as a treatment of vertebral angioma as well as painful and debilitating diseases,” *Chirurgie Paris*, vol. 116, no. 3, pp. 326–335, 1990.
- [7] S. R. Garfin, H. A. Yuan, and M. A. Reiley, “New technologies in spine: kyphoplasty and vertebroplasty for the treatment of painful osteoporotic compression fractures,” *Spine*, vol. 26, no. 14, pp. 1511–1515, 2001.

- [8] D. R. Fourney, D. F. Schomer, R. Nader et al., "Percutaneous vertebroplasty and kyphoplasty for painful vertebral body fractures in cancer patients," *Journal of Neurosurgery*, vol. 98, supplement 1, pp. 21–30, 2003.
- [9] F. M. Phillips, F. T. Wetzel, I. Lieberman, and M. Campbell-Hupp, "An in vivo comparison of the potential for extravertebral cement leak after vertebroplasty and kyphoplasty," *Spine*, vol. 27, no. 19, pp. 2173–2178, 2002.
- [10] S. Dudeney, I. H. Lieberman, M.-K. Reinhardt, and M. Hussein, "Kyphoplasty in the treatment of osteolytic vertebral compression fractures as a result of multiple myeloma," *Journal of Clinical Oncology*, vol. 20, no. 9, pp. 2382–2387, 2002.
- [11] C. Kasperk, J. Hillmeier, G. Nöldge et al., "Treatment of painful vertebral fractures by kyphoplasty in patients with primary osteoporosis: a prospective nonrandomized controlled study," *Journal of Bone and Mineral Research*, vol. 20, no. 4, pp. 604–612, 2005.
- [12] J. T. Ledlie and M. B. Renfro, "Kyphoplasty treatment of vertebral fractures: 2-year outcomes show sustained benefits," *Spine*, vol. 31, no. 1, pp. 57–64, 2006.
- [13] I. H. Lieberman, S. Dudeney, M.-K. Reinhardt, and G. Bell, "Initial outcome and efficacy of "kyphoplasty" in the treatment of painful osteoporotic vertebral compression fractures," *Spine*, vol. 26, no. 14, pp. 1631–1637, 2001.
- [14] M. K. Shindle, M. J. Gardner, J. Koob, S. Bukata, J. A. Cabin, and J. M. Lane, "Vertebral height restoration in osteoporotic compression fractures: kyphoplasty balloon tamp is superior to postural correction alone," *Osteoporosis International*, vol. 17, no. 12, pp. 1815–1819, 2006.
- [15] G. Voggenreiter, "Balloon kyphoplasty is effective in deformity correction of osteoporotic vertebral compression fractures," *Spine*, vol. 30, no. 24, pp. 2806–2812, 2005.
- [16] T. H. Diamond, C. Bryant, L. Browne, and W. A. Clark, "Clinical outcomes after acute osteoporotic vertebral fractures: a 2-year non-randomised trial comparing percutaneous vertebroplasty with conservative therapy," *Medical Journal of Australia*, vol. 184, no. 3, pp. 113–117, 2006.
- [17] K. Hochmuth, D. Proschek, W. Schwarz, M. Mack, A. A. Kurth, and T. J. Vogl, "Percutaneous vertebroplasty in the therapy of osteoporotic vertebral compression fractures: a critical review," *European Radiology*, vol. 16, no. 5, pp. 998–1004, 2006.
- [18] J. D. Barr, M. S. Barr, T. J. Lemley, and R. M. McCann, "Percutaneous vertebroplasty for pain relief and spinal stabilization," *Spine*, vol. 25, no. 8, pp. 923–928, 2000.
- [19] T. H. Diamond, B. Champion, and W. A. Clark, "Management of acute osteoporotic vertebral fractures: a nonrandomized trial comparing percutaneous vertebroplasty with conservative therapy," *American Journal of Medicine*, vol. 114, no. 4, pp. 257–265, 2003.
- [20] M. J. McGirt, S. L. Parker, J.-P. Wolinsky, T. F. Witham, A. Bydon, and Z. L. Gokaslan, "Vertebroplasty and kyphoplasty for the treatment of vertebral compression fractures: an evidenced-based review of the literature," *Spine Journal*, vol. 9, no. 6, pp. 501–508, 2009.
- [21] R. Buchbinder, R. H. Osborne, P. R. Ebeling et al., "A randomized trial of vertebroplasty for painful osteoporotic vertebral fractures," *The New England Journal of Medicine*, vol. 361, no. 6, pp. 557–568, 2009.
- [22] D. F. Kallmes, B. A. Comstock, P. J. Heagerty et al., "A randomized trial of vertebroplasty for osteoporotic spinal fractures," *The New England Journal of Medicine*, vol. 361, no. 6, pp. 569–579, 2009.
- [23] C. M. Bono, M. Heggeness, C. Mick, D. Resnick, and W. C. Watters III, "North American Spine Society Newly released vertebroplasty randomized controlled trials: a tale of two trials," *Spine Journal*, vol. 10, no. 3, pp. 238–240, 2010.
- [24] M. A. Adams, et al., *The Biomechanics of Back Pain*, Churchill Livingstone, Edinburgh, UK, 2002.
- [25] P. Pollintine, A. S. Przybyla, P. Dolan, and M. A. Adams, "Neural arch load-bearing in old and degenerated spines," *Journal of Biomechanics*, vol. 37, no. 2, pp. 197–204, 2004.
- [26] P. Pollintine, M. S. L. M. Van Tunen, J. Luo, M. D. Brown, P. Dolan, and M. A. Adams, "Time-dependent compressive deformation of the ageing spine: relevance to spinal stenosis," *Spine*, vol. 35, no. 4, pp. 386–394, 2010.
- [27] M. A. Adams, P. Pollintine, J. H. Tobias, G. K. Wakley, and P. Dolan, "Intervertebral disc degeneration can predispose to anterior vertebral fractures in the thoracolumbar spine," *Journal of Bone and Mineral Research*, vol. 21, no. 9, pp. 1409–1416, 2006.
- [28] P. Pollintine, P. Dolan, J. H. Tobias, and M. A. Adams, "Intervertebral disc degeneration can lead to "stress-shielding" of the anterior vertebral body: a cause of osteoporotic vertebral fracture?" *Spine*, vol. 29, no. 7, pp. 774–782, 2004.
- [29] J. Luo, D. M. Skrzypiec, P. Pollintine, M. A. Adams, D. J. Annesley-Williams, and P. Dolan, "Mechanical efficacy of vertebroplasty: influence of cement type, BMD, fracture severity, and disc degeneration," *Bone*, vol. 40, no. 4, pp. 1110–1119, 2007.
- [30] J. Luo, et al., "Vertebral deformity: an atraumatic mechanism involving micro-damage and creep," in *Proceedings of the International Society for the Study of the Lumbar Spine Annual Meeting*, Miami, Fla, USA, 2009.
- [31] P. F. Heini, "The current treatment—a survey of osteoporotic fracture treatment. Osteoporotic spine fractures: the spine surgeon's perspective," *Osteoporosis International*, vol. 16, supplement 2, pp. S85–S92, 2005.
- [32] B. Cortet, E. Roches, R. Logier et al., "Evaluation of spinal curvatures after a recent osteoporotic vertebral fracture," *Joint Bone Spine*, vol. 69, no. 2, pp. 201–208, 2002.
- [33] P. Brinckmann, R. Nat, and W. Frobin, "Deformation of the vertebral end-plate under axial loading of the spine," *Spine*, vol. 8, no. 8, pp. 851–856, 1983.
- [34] M. A. Adams, B. J. C. Freeman, H. P. Morrison, I. W. Nelson, and P. Dolan, "Mechanical initiation of intervertebral disc degeneration," *Spine*, vol. 25, no. 13, pp. 1625–1636, 2000.
- [35] P. Brinckmann and H. Grootenboer, "Change of disc height, radial disc bulge, and intradiscal pressure from discectomy: an in vitro investigation on human lumbar discs," *Spine*, vol. 16, no. 6, pp. 641–646, 1991.
- [36] F. Zhao, P. Pollintine, B. D. Hole, P. Dolan, and M. A. Adams, "Discogenic origins of spinal instability," *Spine*, vol. 30, no. 23, pp. 2621–2630, 2005.
- [37] M. A. Adams, D. S. McNally, and P. Dolan, "'Stress' distributions inside intervertebral discs. The effects of age and degeneration," *Journal of Bone and Joint Surgery—British*, vol. 78, no. 6, pp. 965–972, 1996.
- [38] N. Farooq, J. C. Park, P. Pollintine, D. J. Annesley-Williams, and P. Dolan, "Can vertebroplasty restore normal load-bearing to fractured vertebrae?" *Spine*, vol. 30, no. 15, pp. 1723–1730, 2005.
- [39] R. B. Dunlop, M. A. Adams, and W. C. Hutton, "Disc space narrowing and the lumbar facet joints," *Journal of Bone and Joint Surgery—British*, vol. 66, no. 5, pp. 706–710, 1984.
- [40] N. Bogduk, "The innervation of the lumbar spine," *Spine*, vol. 8, no. 3, pp. 286–293, 1983.

- [41] S. Roberts, S. M. Eisenstein, J. Menage, E. H. Evans, and I. K. Ashton, "Mechanoreceptors in intervertebral discs: morphology, distribution, and neuropeptides," *Spine*, vol. 20, no. 24, pp. 2645–2651, 1995.
- [42] A. Rohlmann, T. Zander, and G. Bergmann, "Spinal loads after osteoporotic vertebral fractures treated by vertebroplasty or kyphoplasty," *European Spine Journal*, vol. 15, no. 8, pp. 1255–1264, 2006.
- [43] A. M. Briggs, T. V. Wrigley, J. H. Van Dieën et al., "The effect of osteoporotic vertebral fracture on predicted spinal loads in vivo," *European Spine Journal*, vol. 15, no. 12, pp. 1785–1795, 2006.
- [44] T. S. Keller, D. E. Harrison, C. J. Colloca, D. D. Harrison, and T. J. Janik, "Prediction of osteoporotic spinal deformity," *Spine*, vol. 28, no. 5, pp. 455–462, 2003.
- [45] A. M. Briggs, A. M. Greig, and J. D. Wark, "The vertebral fracture cascade in osteoporosis: a review of aetiopathogenesis," *Osteoporosis International*, vol. 18, no. 5, pp. 575–584, 2007.
- [46] K. Sun and M. A. K. Liebschner, "Evolution of vertebroplasty: a biomechanical perspective," *Annals of Biomedical Engineering*, vol. 32, no. 1, pp. 77–91, 2004.
- [47] R. K. Wilcox, "The biomechanics of vertebroplasty: a review," *Proceedings of the Institution of Mechanical Engineers H*, vol. 218, no. 1, pp. 1–10, 2004.
- [48] S. M. Belkoff, J. M. Mathis, L. E. Jasper, and H. Deramond, "The biomechanics of vertebroplasty: the effect of cement volume on mechanical behavior," *Spine*, vol. 26, no. 14, pp. 1537–1541, 2001.
- [49] R. N. Alkalay, D. Von Stechow, K. Torres, S. Hassan, R. Sommerich, and D. Zurakowski, "The effect of cement augmentation on the geometry and structural response of recovered osteopenic vertebrae: an anterior-wedge fracture model," *Spine*, vol. 33, no. 15, pp. 1627–1636, 2008.
- [50] J. Luo, W. Bertram, D. Sangar, M. A. Adams, D. J. Annesley-Williams, and P. Dolan, "Is kyphoplasty better than vertebroplasty in restoring normal mechanical function to an injured spine?" *Bone*, vol. 46, no. 4, pp. 1050–1057, 2010.
- [51] M. Rürger and W. Schmoelz, "Vertebroplasty with high-viscosity polymethylmethacrylate cement facilitates vertebral body restoration in vitro," *Spine*, vol. 34, no. 24, pp. 2619–2625, 2009.
- [52] F. McKiernan, T. Faciszewski, and R. Jensen, "Reporting height restoration in vertebral compression fractures," *Spine*, vol. 28, no. 22, pp. 2517–2521, 2003.
- [53] F. McKiernan, T. Faciszewski, and R. Jensen, "Does vertebral height restoration achieved at vertebroplasty matter?" *Journal of Vascular and Interventional Radiology*, vol. 16, no. 7, pp. 973–979, 2005.
- [54] M. M. H. Teng, C.-J. Wei, L.-C. Wei et al., "Kyphosis correction and height restoration effects of percutaneous vertebroplasty," *American Journal of Neuroradiology*, vol. 24, no. 9, pp. 1893–1900, 2003.
- [55] A. B. Dublin, J. Hartman, R. E. Latchaw, J. K. Hald, and M. H. Reid, "The vertebral body fracture in osteoporosis: restoration of height using percutaneous vertebroplasty," *American Journal of Neuroradiology*, vol. 26, no. 3, pp. 489–492, 2005.
- [56] H.-J. Wilke, U. Mehnert, L. E. Claes, M. M. Bierschneider, H. Jaksche, and B. M. Boszczyk, "Biomechanical evaluation of vertebroplasty and kyphoplasty with polymethyl methacrylate or calcium phosphate cement under cyclic loading," *Spine*, vol. 31, no. 25, pp. 2934–2941, 2006.
- [57] M. J. Kim, D. P. Lindsey, M. Hannibal, and T. F. Alamin, "Vertebroplasty versus kyphoplasty: biomechanical behavior under repetitive loading conditions," *Spine*, vol. 31, no. 18, pp. 2079–2084, 2006.
- [58] D.-K. Chin, Y.-S. Kim, Y.-E. Cho, and J.-J. Shin, "Efficacy of postural reduction in osteoporotic vertebral compression fractures followed by percutaneous vertebroplasty," *Neurosurgery*, vol. 58, no. 4, pp. 695–700, 2006.
- [59] W.-C. Lin, Y.-C. Lee, C.-H. Lee et al., "Refractures in cemented vertebrae after percutaneous vertebroplasty: a retrospective analysis," *European Spine Journal*, vol. 17, no. 4, pp. 592–599, 2008.
- [60] D. H. Heo, D. K. Chin, Y. S. Yoon, and S. U. Kuh, "Recollapse of previous vertebral compression fracture after percutaneous vertebroplasty," *Osteoporosis International*, vol. 20, no. 3, pp. 473–480, 2009.
- [61] P. A. Hulme, S. J. Ferguson, and S. K. Boyd, "Determination of vertebral endplate deformation under load using micro-computed tomography," *Journal of Biomechanics*, vol. 41, no. 1, pp. 78–85, 2008.
- [62] U. Berlemann, S. J. Ferguson, L.-P. Nolte, and P. F. Heini, "Adjacent vertebral failure after vertebroplasty. A biomechanical investigation," *Journal of Bone and Joint Surgery—British*, vol. 84, no. 5, pp. 748–752, 2002.
- [63] A. T. Trout, D. F. Kallmes, and T. J. Kaufmann, "New fractures after vertebroplasty: adjacent fractures occur significantly sooner," *American Journal of Neuroradiology*, vol. 27, no. 1, pp. 217–223, 2006.
- [64] A. T. Trout and D. F. Kallmes, "Does vertebroplasty cause incident vertebral fractures? A review of available data," *American Journal of Neuroradiology*, vol. 27, no. 7, pp. 1397–1403, 2006.
- [65] G. Baroud, J. Nemes, P. Heini, and T. Steffen, "Load shift of the intervertebral disc after a vertebroplasty: a finite-element study," *European Spine Journal*, vol. 12, no. 4, pp. 421–426, 2003.
- [66] A. Polikeit, L. P. Nolte, and S. J. Ferguson, "The effect of cement augmentation on the load transfer in an osteoporotic functional spinal unit: finite-element analysis," *Spine*, vol. 28, no. 10, pp. 991–996, 2003.
- [67] R. K. Wilcox, "The biomechanical effect of vertebroplasty on the adjacent vertebral body: a finite element study," *Proceedings of the Institution of Mechanical Engineers H*, vol. 220, no. 4, pp. 565–572, 2006.
- [68] A. T. Trout, D. F. Kallmes, K. F. Layton, K. R. Thielen, and J. G. Hentz, "Vertebral endplate fractures: an indicator of the abnormal forces generated in the spine after vertebroplasty," *Journal of Bone and Mineral Research*, vol. 21, no. 11, pp. 1797–1802, 2006.
- [69] P. A. Hulme, S. K. Boyd, P. F. Heini, and S. J. Ferguson, "Differences in endplate deformation of the adjacent and augmented vertebra following cement augmentation," *European Spine Journal*, vol. 18, no. 5, pp. 614–623, 2009.
- [70] M. M. Kayanja, K. Evans, R. Milks, and I. H. Lieberman, "Adjacent level load transfer following vertebral augmentation in the cadaveric spine," *Spine*, vol. 31, no. 21, pp. E790–E797, 2006.
- [71] H. Deramond, N. T. Wright, and S. M. Belkoff, "Temperature elevation caused by bone cement polymerization during vertebroplasty," *Bone*, vol. 25, supplement 2, pp. 17S–21S, 1999.
- [72] K. Y. Huang, J. J. Yan, and R. M. Lin, "Histopathologic findings of retrieved specimens of vertebroplasty with polymethylmethacrylate cement: case control study," *Spine*, vol. 30, no. 19, pp. E585–E588, 2005.

- [73] L. E. Jasper, H. Deramond, J. M. Mathis, and S. M. Belkoff, "Material properties of various cements for use with vertebroplasty," *Journal of Materials Science—Materials in Medicine*, vol. 13, no. 1, pp. 1–5, 2002.
- [74] Y. Chevalier, D. Pahr, M. Charlebois, P. Heini, E. Schneider, and P. Zysset, "Cement distribution, volume, and compliance in vertebroplasty: some answers from an anatomy-based nonlinear finite element study," *Spine*, vol. 33, no. 16, pp. 1722–1730, 2008.
- [75] D. H. Heo, Y. J. Cho, S. H. Sheen, S. U. Kuh, S. M. Cho, and S. M. Oh, "Morphological changes of injected calcium phosphate cement in osteoporotic compressed vertebral bodies," *Osteoporosis International*, vol. 20, no. 12, pp. 2063–2070, 2009.
- [76] A. Boger, M. Bohner, P. Heini, S. Verrier, and E. Schneider, "Properties of an injectable low modulus PMMA bone cement for osteoporotic bone," *Journal of Biomedical Materials Research B*, vol. 86, no. 2, pp. 474–482, 2008.
- [77] A. Boger, K. Wheeler, A. Montali, and E. Gruskin, "NMP-modified PMMA bone cement with adapted mechanical and hardening properties for the use in cancellous bone augmentation," *Journal of Biomedical Materials Research B*, vol. 90, no. 2, pp. 760–766, 2009.
- [78] A. Boger, P. Heini, M. Windolf, and E. Schneider, "Adjacent vertebral failure after vertebroplasty: a biomechanical study of low-modulus PMMA cement," *European Spine Journal*, vol. 16, no. 12, pp. 2118–2125, 2007.
- [79] A. G. Tohmeh, J. M. Mathis, D. C. Fenton, A. M. Levine, and S. M. Belkoff, "Biomechanical efficacy of unipedicular versus bipedicular vertebroplasty for the management of osteoporotic compression fractures," *Spine*, vol. 24, no. 17, pp. 1772–1776, 1999.
- [80] S. Molloy, L. H. Riley III, and S. M. Belkoff, "Effect of cement volume and placement on mechanical-property restoration resulting from vertebroplasty," *American Journal of Neuroradiology*, vol. 26, no. 2, pp. 401–404, 2005.
- [81] M. A. K. Liebschner, W. S. Rosenberg, and T. M. Keaveny, "Effects of bone cement volume and distribution on vertebral stiffness after vertebroplasty," *Spine*, vol. 26, no. 14, pp. 1547–1554, 2001.
- [82] S. Molloy, J. M. Mathis, and S. M. Belkoff, "The effect of vertebral body percentage fill on mechanical behavior during percutaneous vertebroplasty," *Spine*, vol. 28, no. 14, pp. 1549–1554, 2003.
- [83] J. Graham, C. Ahn, N. Hai, and B. D. Buch, "Effect of bone density on vertebral strength and stiffness after percutaneous vertebroplasty," *Spine*, vol. 32, no. 18, pp. E505–E511, 2007.
- [84] J. Luo, L. Daines, A. Charalambous, M. A. Adams, D. J. Annesley-Williams, and P. Dolan, "Vertebroplasty: only small cement volumes are required to normalize stress distributions on the vertebral bodies," *Spine*, vol. 34, no. 26, pp. 2865–2873, 2009.
- [85] K. S. Ryu, C. K. Park, M. C. Kim, and J. K. Kang, "Dose-dependent epidural leakage of polymethylmethacrylate after percutaneous vertebroplasty in patients with osteoporotic vertebral compression fractures," *Journal of Neurosurgery*, vol. 96, no. 1, pp. 56–61, 2002.
- [86] J. Steens, N. Verdonschot, A. M. M. Aalsma, and A. J. F. Hosman, "The influence of endplate-to-endplate cement augmentation on vertebral strength and stiffness in vertebroplasty," *Spine*, vol. 32, no. 15, pp. E419–E422, 2007.
- [87] J. Gibson, et al., "Does cement distribution influence the mechanical outcome of vertebroplasty?" in *Proceedings of the Society of Back Pain Research Meeting*, Keele University, November 2008.
- [88] G. Baroud, M. Crookshank, and M. Bohner, "High-viscosity cement significantly enhances uniformity of cement filling in vertebroplasty: an experimental model and study on cement leakage," *Spine*, vol. 31, no. 22, pp. 2562–2568, 2006.
- [89] M. Loeffel, S. J. Ferguson, L.-P. Nolte, and J. H. Kowal, "Vertebroplasty: experimental characterization of polymethylmethacrylate bone cement spreading as a function of viscosity, bone porosity, and flow rate," *Spine*, vol. 33, no. 12, pp. 1352–1359, 2008.
- [90] K. Sun, et al., "Cement filling pattern has a significant effect on biomechanics of vertebroplasty," in *Proceedings of the 52nd Annual Meeting of the Orthopaedic Research Society*, Chicago, Ill, USA, 2006.
- [91] S. R. Garfin, H. A. Yuan, and M. A. Reiley, "New technologies in spine: kyphoplasty and vertebroplasty for the treatment of painful osteoporotic compression fractures," *Spine*, vol. 26, no. 14, pp. 1511–1515, 2001.
- [92] M. Weißkopf, J. A. K. Ohnsorge, and F. U. Niethard, "Intravertebral pressure during vertebroplasty and balloon kyphoplasty: an in vitro study," *Spine*, vol. 33, no. 2, pp. 178–182, 2008.
- [93] J. T. Ledlie and M. Renfro, "Balloon kyphoplasty: one-year outcomes in vertebral body height restoration, chronic pain, and activity levels," *Journal of Neurosurgery*, vol. 98, supplement 1, pp. 36–42, 2003.
- [94] J. T. Ledlie and M. B. Renfro, "Decreases in the number and severity of morphometrically defined vertebral deformities after kyphoplasty," *Neurosurgical Focus*, vol. 18, no. 3, article e4, 2005.
- [95] M. K. Shindle, M. J. Gardner, J. Koob, S. Bukata, J. A. Cabin, and J. M. Lane, "Vertebral height restoration in osteoporotic compression fractures: kyphoplasty balloon tamp is superior to postural correction alone," *Osteoporosis International*, vol. 17, no. 12, pp. 1815–1819, 2006.
- [96] S. M. Belkoff, J. M. Mathis, D. C. Fenton, R. M. Scribner, M. E. Reiley, and K. Talmadge, "An ex vivo biomechanical evaluation of an inflatable bone tamp used in the treatment of compression fracture," *Spine*, vol. 26, no. 2, pp. 151–156, 2001.
- [97] A. Hiwatashi, R. Sidhu, R. K. Lee, R. R. DeGuzman, D. T. Piekut, and P.-L. A. Westesson, "Kyphoplasty versus vertebroplasty to increase vertebral body height: a cadaveric study," *Radiology*, vol. 237, no. 3, pp. 1115–1119, 2005.
- [98] D. R. Wilson, E. R. Myers, J. M. Mathis et al., "Effect of augmentation on the mechanics of vertebral wedge fractures," *Spine*, vol. 25, no. 2, pp. 158–165, 2000.
- [99] D. Ananthakrishnan, S. Berven, V. Deviren et al., "The effect on anterior column loading due to different vertebral augmentation techniques," *Clinical Biomechanics*, vol. 20, no. 1, pp. 25–31, 2005.
- [100] J. T. Liu, W. J. Liao, W. C. Tan et al., "Balloon kyphoplasty versus vertebroplasty for treatment of osteoporotic vertebral compression fracture: a prospective, comparative, and randomized clinical study," *Osteoporosis International*, vol. 21, no. 2, pp. 359–364, 2010.
- [101] P. F. Heini, U. Berlemann, M. Kaufmann, K. Lippuner, C. Fankhauser, and P. Van Landuyt, "Augmentation of mechanical properties in osteoporotic vertebral bones—a biomechanical investigation of vertebroplasty efficacy with different bone cements," *European Spine Journal*, vol. 10, no. 2, pp. 164–171, 2001.

- [102] K. B. Higgins, R. D. Harten, N. A. Langrana, and M. F. Reiter, "Biomechanical effects of unipedicular vertebroplasty on intact vertebrae," *Spine*, vol. 28, no. 14, pp. 1540–1547, 2003.
- [103] E. R. Myers and S. E. Wilson, "Biomechanics of osteoporosis and vertebral fracture," *Spine*, vol. 22, supplement 24, pp. 25S–31S, 1997.
- [104] P. Pollintine, J. Luo, B. Offa-Jones, P. Dolan, and M. A. Adams, "Bone creep can cause progressive vertebral deformity," *Bone*, vol. 45, no. 3, pp. 466–472, 2009.



Hindawi

Submit your manuscripts at
<http://www.hindawi.com>

