

Wordless Intervention for Epilepsy in Learning
Disabilities (WIELD):
Easy read summary

Contents

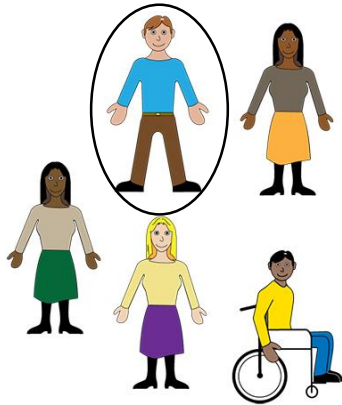
What is this report about?	2
What did we do?	3
What did we find out?.....	6
Summary.....	8

What is this report about?



This is an easy-read report about the WIELD study.

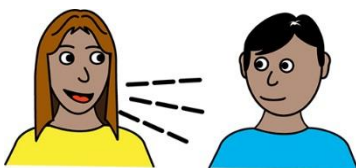
WIELD stands for Wordless Intervention for Epilepsy in Learning Disabilities.



1 in 5 people with learning disabilities have epilepsy.

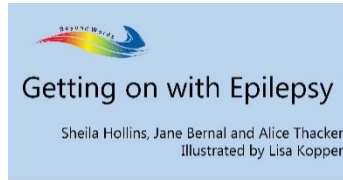


Epilepsy can be difficult to manage.

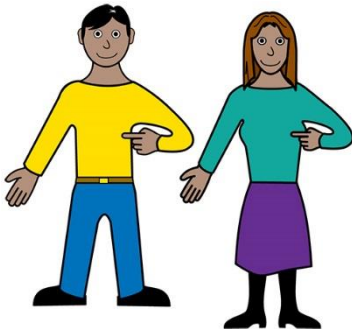


We need to know more about how to help people with learning disabilities and epilepsy look after themselves and get support.

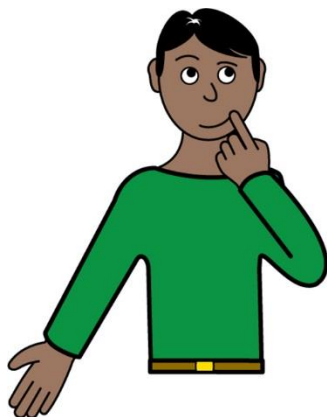
What did we do?



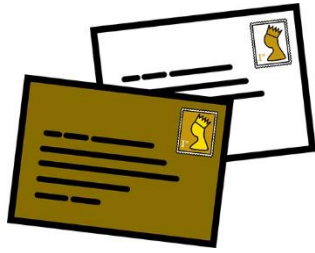
We wanted to find out if a booklet with pictures can help people with learning disabilities to understand and manage their epilepsy and get support.



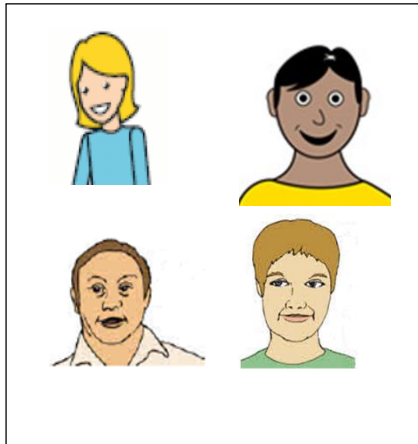
We did a small study with a small number of people. It will help us decide if a larger study is possible.



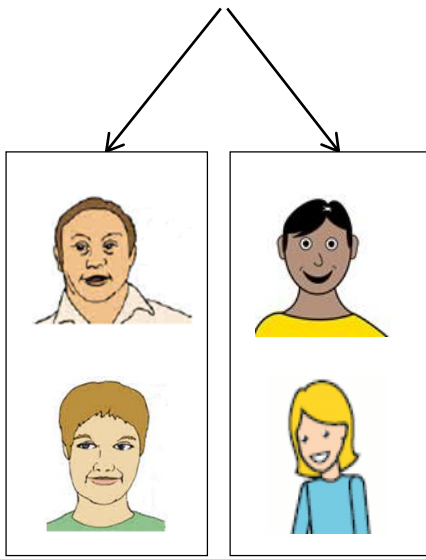
The larger study will tell us if the booklet is helpful for people with learning disabilities who have epilepsy.



We wrote to people who went to epilepsy clinics to ask if they wanted to take part in the study.

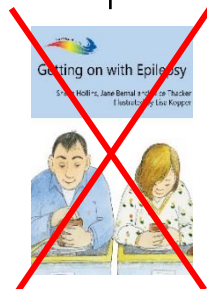
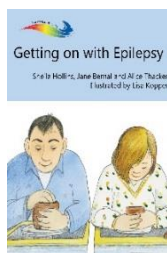


Some people agreed to take part in the study.

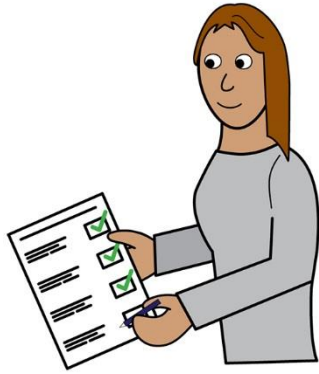


We put people into two groups by chance.

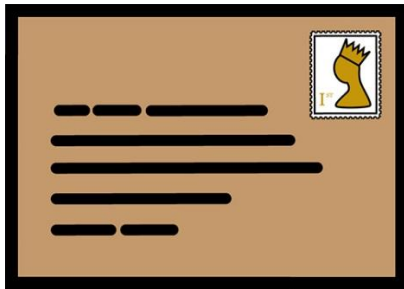
In one group, people were given a book, to use with a nurse and at home.



In the other group, people were not given a booklet to start with. They were given the booklet at the end of the study.



People filled in questionnaires about their health.

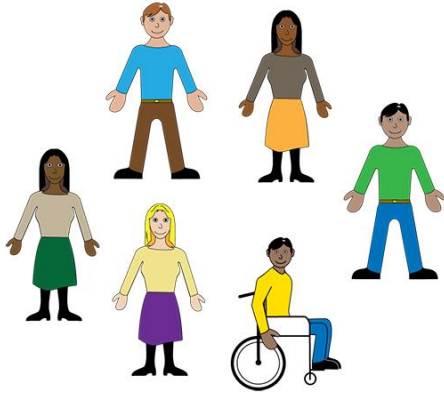


They did the first questionnaire with a researcher. Three more questionnaires were sent in the post.

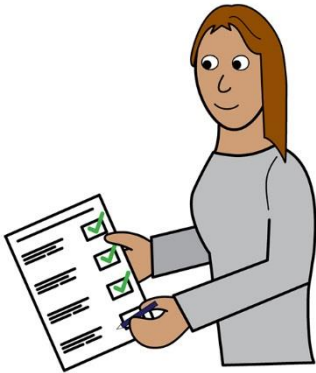


We also asked some people questions in an interview.

What did we find out?



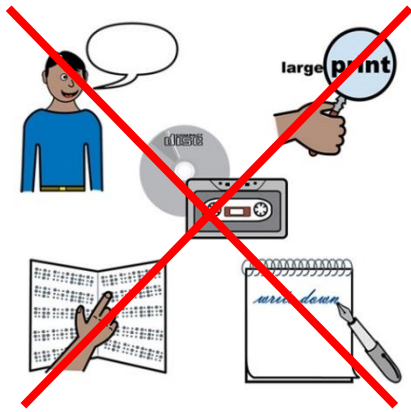
Forty people took part in the study.



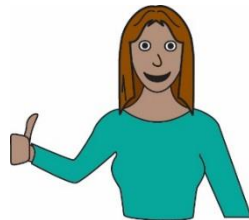
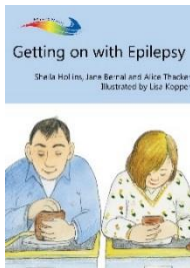
Most people did not have any problems when filling in the questionnaires and posting them back.



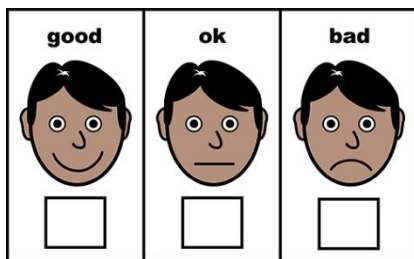
People liked taking part in the study.



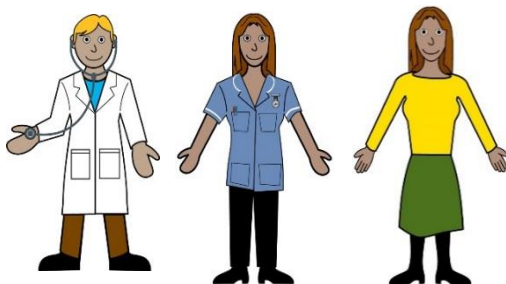
Most people with learning disabilities had not received any information about epilepsy before.



People liked the picture booklet.



The picture booklet might help people with learning disabilities and epilepsy to feel better.



The picture booklet could be used by people with learning disabilities and epilepsy, their carers or their doctors.

Summary



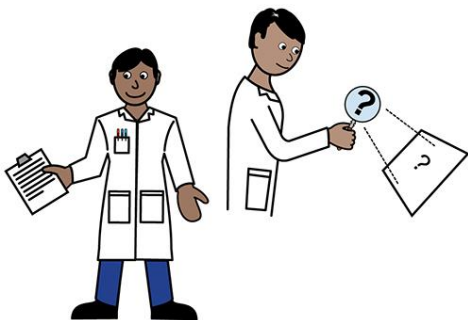
We did a study to find out more about how to help people with learning disabilities and epilepsy.



We used a picture booklet about epilepsy with people with learning disabilities.



This was a small study to see if a larger study might work.



We think the picture booklet might be helpful for people with learning disabilities and epilepsy. A study with more people would find this out.


This report was produced on behalf of the WIELD trial steering group:

Silvana Mengoni, Bob Gates, Georgina Parkes, David Wellsted, Garry Barton, Howard Ring, Karin Friedli, Asif Zia, Lesley Barcham, John Wilmott and Marie-Anne Durand.

If you'd like to contact the WIELD study team, then please email, call or write to Silvana Mengoni at the University of Hertfordshire:

 s.mengoni@herts.ac.uk

 01707 284494

 Dr. Silvana Mengoni, University of Hertfordshire, Hatfield, AL10 9AB

Thank you to the Making Services Better group in Hertfordshire Partnership University NHS Foundation Trust for their help with this report.

This report presents independent research funded by the National Institute for Health Research (NIHR) under its Research for Patient Benefit (RfPB) Programme (Grant Reference Number PB-PG-0213-30042). The views expressed are those of the author(s) and not necessarily those of the NHS, the NIHR or the Department of Health.