



UWL REPOSITORY
repository.uwl.ac.uk

Cervical and breast cancer screening uptake among women with serious mental illness: a data linkage study

Woodhead, Charlotte, Cunningham, Ruth, Ashworth, Mark, Barley, Elizabeth ORCID:
<https://orcid.org/0000-0001-9955-0384>, Stewart, Robert J. and Henderson, Max J. (2016) Cervical and breast cancer screening uptake among women with serious mental illness: a data linkage study. *BMC Cancer*, 16 (1). p. 819. ISSN 1471-2407

<http://dx.doi.org/10.1186/s12885-016-2842-8>

This is the Draft Version of the final output.

UWL repository link: <https://repository.uwl.ac.uk/id/eprint/2942/>

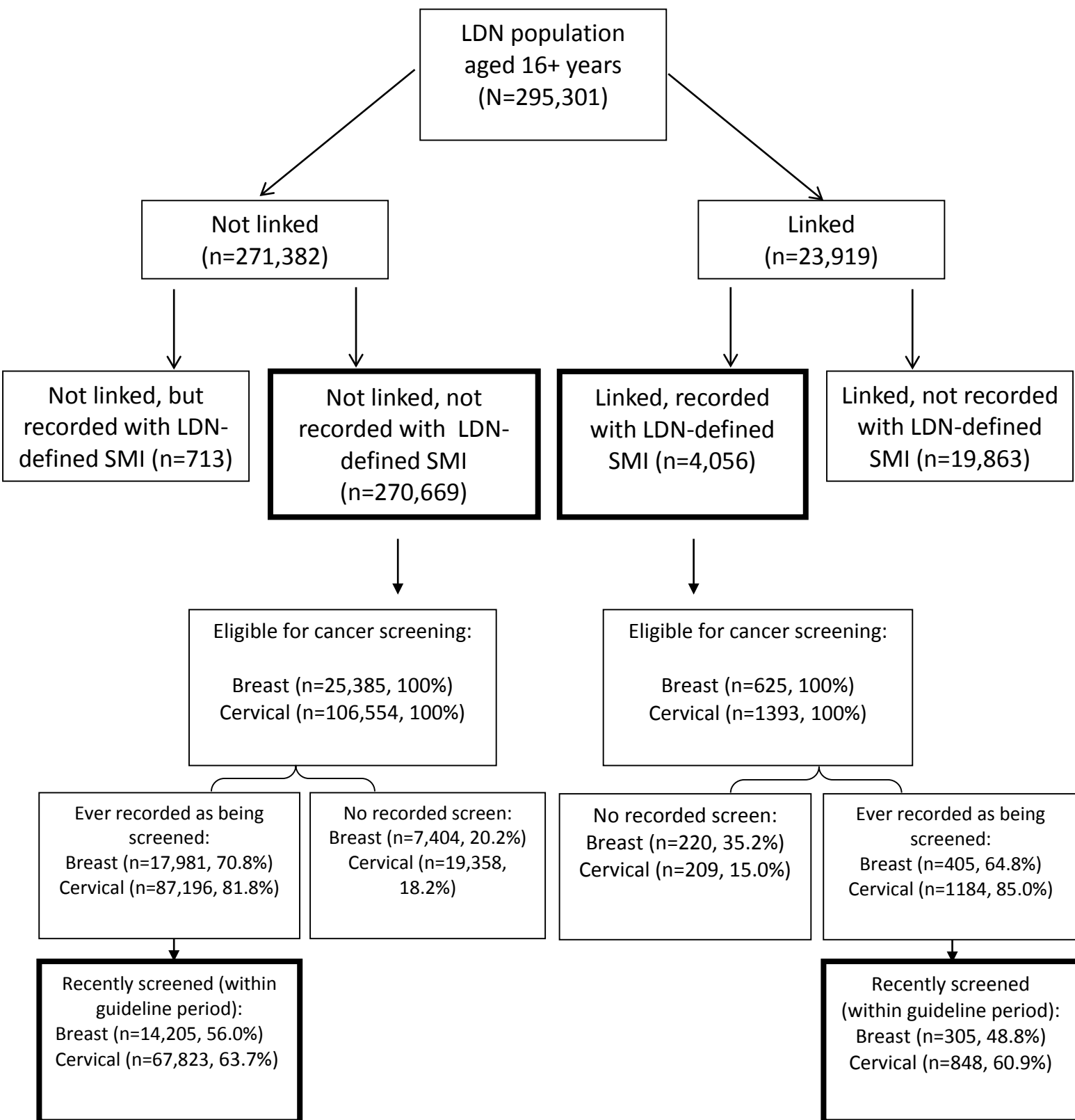
Alternative formats: If you require this document in an alternative format, please contact: open.research@uwl.ac.uk

Copyright:

Copyright and moral rights for the publications made accessible in the public portal are retained by the authors and/or other copyright owners and it is a condition of accessing publications that users recognise and abide by the legal requirements associated with these rights.

Take down policy: If you believe that this document breaches copyright, please contact us at open.research@uwl.ac.uk providing details, and we will remove access to the work immediately and investigate your claim.

Figure 2 An illustration of Lambeth DataNet (LDN) and the Clinical Record Interactive Search (CRIS) database linkage sample. Also shown is the population eligible for cervical and breast cancer screening, number and proportion of eligible population screened overall and screened within Quality and Outcomes Framework (QOF) guideline periods.



Notes. SMI=Serious mental illness.